

GAZETTE

FREE

HEDGE•END
TOWN COUNCIL

Think you know Hedge End?
Try our fun quiz

A GUIDE TO...
TREE PRESERVATION ORDERS

WHAT'S ON
IN OUR
HALLS

It's Buzzin' 
at the Nature Reserve

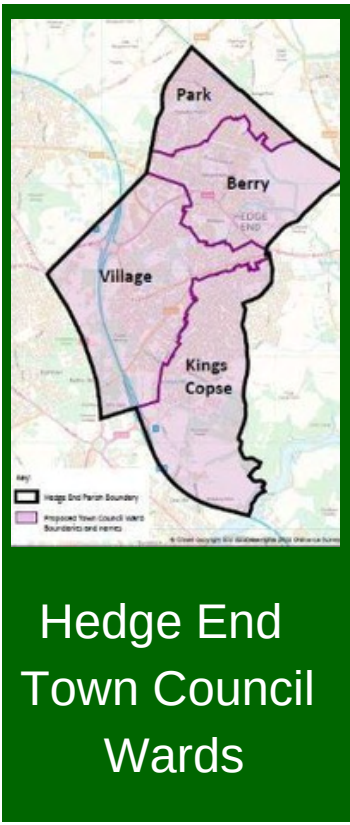
St John's
Celebrates
150 years!

Hooked on
Crochet
at The Dart

Spotlight On ...

KINGS COPSE

HEDGE END TOWN COUNCILLORS



Berry
Leigh Hadaway
07429 097379



Berry
Lucy Jurd
07730 072606



Berry
Rupert Kyrle
02380 407045



Berry
Ron Nichols
07981 852901



Park
Ian Corben
07561 343858



Park
Dave Kinloch
07875 232557



Park
James Mitchell
0800 316 3435



Park
Chair: P & R*
Derek Pretty
01489 797213



Kings Copse
Chair: H & P*
Paul Carnell
01489 785216



Kings Copse
Tonia Craig
02380 404680



Kings Copse
Chair: Personnel & Strategy Committee
Keith House
07827 986565



Kings Copse
Cliff Morris
07848 946822



Kings Copse
Chair of Council
John Shepherd
07879 836282



Village
Margaret Allingham
01489 798646



Village
Helen Corben
01489 692406



Village
Cynthia Garton
01489 797213



Village
John Jupe
01489 780293



Village
Chair: R & A*
Jane Welsh
01489 784962

P & R* = Policy & Resources Committee **R & A*** = Recreation & Amenities Committee
H & P* = Highways & Planning Committee

(Email: Firstname.Lastname@hedgeend-tc.gov.uk)

Hello From The Chair



WELCOME to the Spring Edition of The Gazette!

So, here we are in Spring once again. Winter (one hopes!) is behind us and I, for one, am looking forward to the better and drier weather the next few months have to offer.

This edition of the Gazette contains a range of articles about Hedge End and the variety of groups, for both the young and old, which work in our wonderful community.

One of these groups is Hedge End Good Neighbours, who are asking for new volunteer drivers. We also cast a spotlight on Hedge End's Youth Club and Friday Night Project.

2024 sees the 150th Anniversary of St John's Church. To celebrate, the Church has a series of exciting events planned throughout the year. More information can be found on Page 10.

Applications close for the Town Council's Community Grants on 26th March and I would encourage those wishing to apply to do so as soon as possible, although there may be another opportunity to apply in the Autumn if funds remain. The Hedge End WI were successful in their application last year and we include an article on Page 13 describing how they used the funding to support additional meetings.

Twice a month the Council holds Highways and Planning Committee meetings. One of the questions that is often asked relates to Tree Preservation Orders, or "TPOs" as they are more commonly known. There is an article on Page 5 which helpfully explains what TPOs are and the rules and regulations surrounding them.

Finally, I would like to remind everyone that the Council's Annual Parish Assembly will take place on the evening of Thursday 14th March at the Council's offices at the 2000 Centre. All are welcome.

Cllr. John Shepherd, Chair of Council

The Town Clerk's Desk



Spring is most definitely in the air! As always at this time of year, there is lots going on for the Council. As we move into the new financial year with an agreed budget I start to prepare for the audit of accounts.

Both the new year budget and the previous years accounts and audit are presented on the website for people to view.

As Cllr. John Shepherd mentions above, the Annual Parish Assembly this year will be on Thursday 14th March at 7pm. We advertise this on all our notice boards in advance, so hopefully anyone wanting to attend can do so. The meeting opens with refreshments and takes a look back at the past year for the Council, clubs and any members of the community who wish to speak. The evening culminates in the awards for Serving the Community, a chance to formally recognise those that give back to our area.

The ever-popular Eastleigh Active (previously Park Sport) will return during Easter and in the Summer so watch out for more on this in future editions and social media. We are looking forward to Eastleigh and Hedge End Unwrapped which will be returning to Greta Park for a day of fun filled performances on Sunday 9th June.

And finally, we have been working with Eastleigh Borough Council on the transfer of the football fields and open space at Berrywood Fields and hope to complete this in early Summer. Football teams are encouraged to apply before the 31st May across both Council owned sites.

For more real time information follow us on Facebook 'HedgeEndTC' or X (formerly Twitter) @HedgeEndTown and keep an eye on our website www.hedgeend-tc.gov.uk

Let's hope for good weather this Spring so we can all make the most of our parks and open spaces over the coming months.

Sarah Jelley, Town Clerk

Local Upgrades



THE METAL fence surrounding the Padding Pool has been extended, replacing the old wooden one. This was funded from a £2,150 grant from Cllr. Tonia Craig at Hampshire County Council.

Hedge End Town Council received a further £242 for additional trees for Turnpike, plus £981 for the removal of the bin store and trees at the Drummond Community Centre.

The Council was also awarded a £964 Hampshire County Council grant from Cllr. Rupert Kyrle for a new bench for the Beattie Rise open space. Our thanks to both councillors for their valuable contributions.

Botley Bypass

MILESTONE Infrastructure Limited has been appointed by Hampshire County Council to deliver the final phase of the Botley Bypass.

This final phase of works, known as Botley Bypass Eastern Section, will link to the Phase 1 works and provide the new eastern section of the Bypass route from Winchester Street to the existing A334, east of Botley Village.

Hampshire County Council said this two-stage contract has allowed Milestone's early involvement to complete the design work, in partnership with the Council's in-house designers, to ensure the construction programme is implemented in an efficient and cost-effective manner.

The timing of the works is currently being determined.

For updates please see:
<https://www.hants.gov.uk/transport/transportchemes/botleybypass>



M27 Resurfacing



WORK starts in March on resurfacing the M27 between Junction 7, Hedge End and Junction 5, Stoneham Interchange to reduce noise, improve drainage and provide a smoother surface.

The work is due to be completed by Spring 2026. During that time there will be a contraflow and speed restrictions in place, but it is not anticipated that there will be any daytime road closures.

For more information and to sign up for updates please see www.nationalhighways.co.uk/m27concrete

HEDGE END
TOWN COUNCIL



All Welcome - Come and join us!

7pm on Thursday 14th March

- Find out what's new from your Council, Community and Clubs.
- Serving the Community Awards Ceremony.
- Refreshments provided.

HEDGE END TOWN COUNCIL OFFICES, 2000 CENTRE,
ST JOHN'S ROAD, HEDGE END, SO30 4AF

Understanding Tree Preservation Orders

By Hedge End Town Council Operations Manager Brett Athow

TREE Preservation Orders (TPOs) were first introduced as part of the Town and Country Planning Act in 1947 to ensure that trees could be enjoyed as a 'public amenity'.

'Public amenity' is a broad term used to assess the value of natural resources and their importance to the community. This could include the environmental benefit they provide, their importance within the landscape, the cultural value or to provide protection for the tree as part of a new development.

The TPO legislation is extensive, and this is only a brief overview. TPOs have not only helped maintain a tree's environment but have also protected important and historic trees.

You can apply to carry out work to your tree via the Planning Portal: www.planningportal.gov.uk

The application is free and the process takes around eight weeks.



Town and Country Planning Act

So what is a tree? Bizarrely the term 'tree' is not actually defined in the Act, but for the purposes of the TPO legislation, the High Court has held that a 'tree' is *'anything which ordinarily one would call a tree'*.

TPOs are made by the local planning authorities (LPA) to protect specific trees, groups of trees or woodlands. In Hedge End, TPOs are administered by Eastleigh Borough Council.

TPOs prohibit cutting, topping, lopping, uprooting, or wilful damage of trees without consent.

If you deliberately destroy a protected tree, or damage it in a manner likely to destroy it, you could be liable to an unlimited fine.

Lesser offences carry smaller fines.



Exemptions

There are certain exemptions that permit tree work to be carried out without an application. For example, removing dead branches or if the tree poses an immediate risk of danger. In this scenario, the tree owner must provide written notice as soon as possible after the work is necessary. The extent of work should only be enough to remove the risk.

If a tree is dead, the LPA requires a five-day notice prior to felling, and there may be an obligation to replant.

For more information on TPOs, see www.eastleigh.gov.uk or scan this QR Code:



For an interactive map of all the TPOs in Eastleigh Borough scan this QR Code:



Kings Copse

HEDGE End is now served by four new electoral wards, with the change taking place just before last May's local elections. They are Berry, Kings Copse, Park and Village.

In the first of a four part series, we start with a look at the Kings Copse ward.

The Hedge End Town Councillors for Kings Copse are Cllr. Paul Carnell, Cllr. Tonia Craig, Cllr. Keith House, Cllr. Cliff Morris and Chair of the Council Cllr. John Shepherd. You can find their contact details on Page 2.

Councillors are unpaid volunteers working on behalf of the community. Where issues arise, they can help residents find a solution and can be great advocates for action.

citizens advice

Here every Thursday 10am-12 noon



Our Lady of the Assumption Catholic Church



Freegrounds Infant and Junior Schools

Councillors have been lobbying Hampshire County Council on behalf of local residents on parking issues during drop off and pick up.



Kings Copse Primary School

A Park and Stride was set up by councillors at the Norman Rodaway Pavilion Car Park to alleviate parking issues at the school.



Public Noticeboard Freegrounds Road (no business adverts)



Councillors campaigned for school crossing patrols.

PARK & STRIDE



Norman Rodaway Pavilion and Sports Ground

SLOW DOWN

Kings Copse Avenue

Councillors are campaigning for Speedwatch sessions on this stretch of road.



Norman Rodaway Play Area

Funding was secured by councillors for refurbishment last year with new surfacing and equipment added.

30

Barnfield Way

Councillors are lobbying Hampshire Highways for 30mph repeater signs on this road to help tackle speeding.



Public Noticeboard Heath House Lane (no business adverts)



Latitude Play Area

Walking access to Hamble River Country Park



Kings Copse AFC

The club began in 2020 with nine children and now has more than 150. There are 11 football teams for children from age four to 13 years.

Chairman Kevin O'Hare said "Our moto is Football for All. We have mixed teams of all abilities."

Email: kingscopseafc@gmail.com



Barnfield Way Bypass

Residents' concerns were taken up by councillors who liaised with developers to resolve flooding problems on the road bridge.



QE2 Activity Centre

The southern part of the Kings Copse ward was transferred to Hedge End from Bursledon in a 2017 review. Councillors instigated the move as it was thought this area would look more to Hedge End for local services, with the M27 a natural and permanent boundary between the two communities.



River Hamble

Autism Acceptance Week

By Hedge End Town Council Youth Team Leader David Howse

HERE at the Friday Night Project we are looking forward to celebrating World Autism Acceptance Week this April.

Autistic people face discrimination and barriers across all sectors of society – in education, health and social care systems, employment and everywhere in between. We support our local Autistic young people aged between 14 and 25 with a safe space to meet with friends, learn new skills and have fun.

Autism is a lifelong developmental disability and can have an impact on social communication and interaction, motor skills and co-ordination, sensory processing and speech. Autistic people may also have different ways of learning, moving or paying attention and, like anyone, their own strengths and weaknesses.

At the Friday Night Project our Autistic young people can access tailored information, guidance and support to overcome barriers and challenges, along with opportunities to explore their interests, develop skills and build friendships for fulfilled lives.



Youth Team Leader David Howse with
Youth Team Workers Chrissy and Bethany

World Autism Acceptance Week raises awareness and advocates for the acceptance of autism. It aims to ensure that autistic individuals receive sufficient support from mental health, education, and social care services or just being understood and heard by the people close to them.

The Friday Night Project is open to young people from Hedge End, West End and Botley. By referral only. For more details please email youthteam@hedgeend-tc.gov.uk



PADDLING POOL

OPENING SOON!

Opening Hours: 10.00am to 5.00pm

7 Days a Week

Under 12s only

Please park at the former Budgens Supermarket
Site, Wildern Lane, SO30 4DY.



COMMUNITY GRANTS

Hedge End Town Council awards grants twice a year to give a helping hand to local groups.

Please read the guidelines before submitting an Application Form via our website: www.hedgeend-tc.gov.uk

**Applications Close: Tuesday 26th March
(Terms & Conditions Apply)**

It's Buzzin' at the Reserve



1

Photographs Courtesy of Terry Crow



2



3



4



5



6



7

Located on over ten hectares, the Wildern Local Nature Reserve is a diverse landscape featuring woodland, grazing fields, meadowland and ponds. It's managed and owned by Hedge End Town Council and provides a haven for local wildlife and biodiversity. The volunteer group Friends of Wildern Nature Reserve are on Facebook 'Friends of Wildern Local Nature Reserve' and X @WildernFriends

WORLD Bee Day takes place every year on the 20th May to honour the vital role of bees and other pollinators in our ecosystems. The United Nations chose the date as it's the birthday of Anton Janša, the pioneer of beekeeping in the 18th century.

Bees and other pollinators, such as butterflies, bats and hummingbirds, are increasingly under threat from human activities.

Sixty bees species have been recorded across the **Wildern Local Nature Reserve** in Hedge End since early 2018. Around 270 species have been found across Britain.

Friends of Local Wildern Nature Reserve member Terry Crow tells us about the bees who come to visit Hedge End.

1. The Southern Cuckoo Bumblebee doesn't collect pollen for off-spring - instead it hijacks the nest of the Buff-tailed Bumblebee, killing the queen. Mainly a Southern species, it can be found on grassland and gardens.

2. The Ashy Mining Bee is a Spring-flying solitary bee. The female builds her nests in the ground.

3. The Wool-carder Bee loves the Marsh Woundwort found in Wildern Moor, but will be attracted to flowers in your garden too.

4. The Variable Nomad Bee was first recorded in Britain in 2016 and found in Wildern in 2022.

5. The Ivy Bee is a solitary bee found in Southern Britain emerging late in the season from September to November. As its name suggests, an important source of pollen is from ivy.

6. The Yellow-shouldered Nomad Bee is a rare species seen at Coltsfoot Pond. It is parasitic on solitary bees.

7. The Common Mourning Bee turned up in Wildern Moor in September 2023.

Cllr. Allingham Asks ...

Do You Know Hedge End?

THEY'RE familiar sights across Hedge End but can you identify what they are and where you would find them? Cllr. Margaret Allingham has the answers to this fun quiz on Page 12.

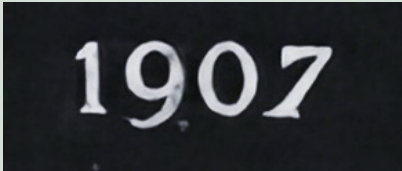


Photo 1



Photo 2



Photo 3



Photo 4



Photo 5



Photo 6



Photo 7



Photo 8



Photo 9



Photo 10

Horton Heath Link Road

THE REMAINING one mile section of the link road which will connect Hedge End and Fair Oak is due to be completed in the Summer.

It forms part of Eastleigh Borough Council's new development One Horton Heath, set in 355 acres running alongside Burnetts Lane and Chalcroft Business Park to the south, and Allington Lane to the north.

As part of the Council's Infrastructure First commitment, Luddon Construction are building the remaining one-mile route section between Burnetts Lane roundabout to the south and Allington Lane roundabout to the north, providing a new route between Hedge End and Fair Oak.

Keep up to date with the Horton Heath development at: www.onehortonheath.co.uk/whats-happening-now.

St John's Celebrates 150th Anniversary

THE PARISH Church of St. John the Evangelist was consecrated on 15th July 1874, construction having started in 1873 to a design by architect John Colson.

Before the church was built, Anglicans either went to Botley or West End to attend services. As the population of Hedge End grew, these churches became overcrowded.

An acre of land was donated by William Warner Esq and an estimate of £2000 for building works was quoted. Within a few months £1000 of donations was received from private individuals and work began. The total cost was £3,560. Although not fully completed, the church was consecrated by the Bishop of Winchester in 1874 with flags along St John's Road.

In February 1876, St. John's, Hedge End, was constituted as a separate parish for ecclesiastical purposes. Now known as St. John the Evangelist, complete with bell tower and spire, the church consists of a nave, south transept and apsidal chancel, with an organ chamber within it and the lower part of the tower forming a vestry.

A clock with two dials was added in 1889 as a result of the Jubilee Clock Fund set up to celebrate Queen Victoria's fifty years on the throne. A new five hundredweight bell was added at the same time.

150TH ANNIVERSARY EVENTS

- 16TH MARCH - QUIZ NIGHT 7-10PM
- 27TH APRIL - WHIST DRIVE 2-4PM
- 11TH MAY - TEDDY BEAR PARACHUTE JUMP AND BBQ 12-4.30PM
- 14TH JUNE - EVENING OF HYMNS, PIMMS AND BEER
- 18TH - 21ST JULY - FLOWER/ART FESTIVAL

THERE WILL BE A SMALL CHARGE FOR EVENTS.

POSTERS WILL BE AROUND THE VILLAGE OR EMAIL

150TH.ANNIVERSARY@STJOHNS-HEDGEEND.ORG.UK

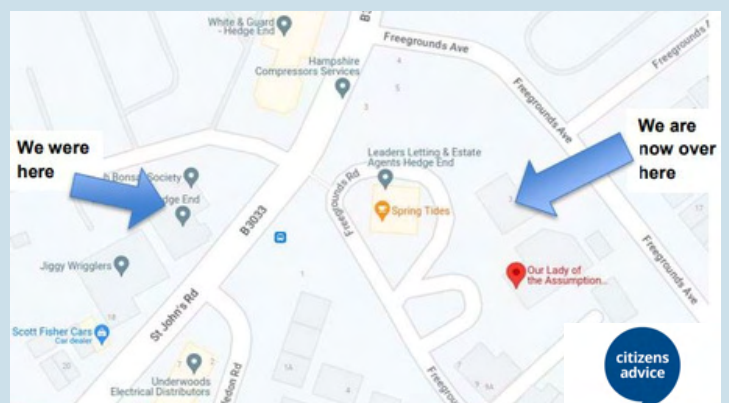
New Location for Citizens Advice

THE HEDGE End drop-in service has moved due to the closure of the United Reform Church.

The Citizen Advice team are now based in the building to the left of Our Lady of the Assumption Catholic Church, 1 Freegrounds Road, SO30 0HG.

Face to face sessions take place on Thursdays from 10am until 12 noon. No appointments necessary. Or call free on 0808 278 7862 five days a week.

By car – access the church car park via Freegrounds Road. On foot – cross St John's Road, keep Spring Tides café on your left, walk down the lane and the car park is on your left.



Could You Be A Good Neighbour?

HEDGE End Good Neighbours are a group of volunteer drivers who take those in need from Hedge End to hospital or other medical appointments. They need more volunteers to help out on a flexible basis.

Chairman Steve Long tells his story.

I am one of the drivers for Hedge End Good Neighbours. If you haven't heard of us, we are a group of volunteers set up by the Good Neighbours Network back in 2016. They saw a need for such a group to help our, mainly elderly, residents to get to their medical appointments, but people of any age can use our services.

This isn't just to the doctors' surgery or one of the dentists, but also to hospitals in Southampton and beyond.

I have met a lot of interesting people in these seven years and provided company to those who live alone. Many of them have interesting stories to tell of their lives and memories of Hedge End. Did you know that in the centre where there have been traffic lights for as long as most people remember, there once was a roundabout?

We only discovered after she died that one of our clients was one of the women who used to fly the locally built Spitfires to the RAF bases all over the country, without any radar or protection. Oh! The stories she could have told us.



All drivers get expenses at a rate laid down by the Inland Revenue. Insurance is provided to cover the people you carry. You can work with us as much as you like, particularly if you have other family commitments.

I have thoroughly enjoyed this driving work, and I sometimes wonder what I would do with myself if it wasn't for Good Neighbours.

If you are interested in joining us, please give one of our co-ordinators a ring on 03330 448842. Leave your details and one of our team will get in touch with you. We look forward to you joining our happy group of volunteers.

D-DAY80

80TH ANNIVERSARY

6th June

THE ROYAL British Legion is hoping to find as many D-Day and Normandy veterans as possible to commemorate the 80th Anniversary this year.

The D-Day landings of 6th June 1944 was the largest seaborne invasion in history. Along with the associated airborne operations, it marked the beginning of the liberation of France and western Europe.

The registration form is now closed, but people can still email RemembranceEvents@britishlegion.org.uk

The Royal British Legion says it will support all Normandy veterans who wish to mark the operation 80 years on in a way suitable to their needs, and once registered, it will be in touch with the veterans and/ or carers to understand how they would like to participate.



Easter

EASTER is the most important and oldest festival of the Christian Church celebrating the resurrection of Christ. It is celebrated on the first Sunday after the full moon, on or after 21st March. Lent is the period of six weeks leading up to Easter and is traditionally a time of giving things up and a test of self-discipline.

The last week of Lent is called Holy Week, incorporating Palm Sunday, Maundy Thursday, when Christians remember The Last Supper when Jesus ate the Passover meal with his disciples, and Good Friday - a day of mourning commemorating the execution of Jesus by crucifixion.

For Christians, Easter eggs are used as a symbol of new life - the resurrection of Jesus and the promise of eternal life if they follow his teachings. Easter Sunday is on Sunday 31st March.

Ramadan and Eid al Fitr

By Hedge End resident Syed B

RAMADAN is a sacred month in the Islamic lunar calendar focusing on spiritual connection through fasting (Sawm), communal Iftar meals, Tarawih prayers, charity, and reflection on the Quran. It culminates in Eid al Fitr, a celebration of unity and gratitude with feasting and family gatherings.

Acts of charity and kindness are key elements of Ramadan, a way to share our blessings with those less fortunate.

Ramadan is a celebration of our faith, unification and shared values, serving as a reminder of our spiritual journey and a coming together in celebration, strengthening our connection to both our faith and our fellow Muslims. Ramadan begins on Sunday 16th March and Eid al Fit is expected to be celebrated on 10th April.



1. St John's Rooms, St John's Road, built in 1907. Now home to the Little Acorns Children's Day Nursery.



2. A sculpture of a 4000 year old axehead from the Sculpture Trail at Dowd's Farm. Each one of the five pieces reflects the history of human occupation and cultivation at Dowd's Farm.

12



3. The gate to The Berry Theatre in Wildern Lane. The leaves represent movement, growth and development. The red leaf brings in the red berry colour scheme.



4. The Victorian post box at the Old School House. No longer in service.



6. The town centre plaque commemorating boxer Muhammad Ali's visit.

Answers: Do You Know Hedge End?



5. Cllr. Margaret Allingham on the Platinum Jubilee Bench at Greta Park installed in 2022.



7. One of the three Hedge End Green Route waymarkers, this one on Dowd's Farm Park near Shamblehurst Lane South.



8. The Shamblehurst Barn sign in Old Shamblehurst Lane.



9. Hedge End Baptist Chapel in Upper Northam Road.



10. The new play castle at the refurbished Norman Rodaway Play Area.

Welcome to Crochet Club!

LOOKING for a new hobby? Why not join the free weekly Crochet Club in Hedge End?

The class runs every Thursday from 12.30pm to 1.30pm in the Dart foyer on the Wildern School site. The group has around 10 regulars. New members are very welcome, including complete beginners. No need to book, just drop in.

Arts Centre Manager Laura Day said: "I love our little Crochet Club. Local people come along, have a natter over a coffee and learn how to crochet.

They can work on their own projects or help us make little squares for our communal blanket which we will gift to a local care home."

"Bringing people together to create is so important to me for so many reasons....some of our attendees are caring for someone at home, some live alone, some need a break from work and others just want to learn a new skill.

This group gives people a space to take part in a mindful activity, a reason to get out of the house and the opportunity to meet some new friends and a bit of downtime to just talk about the weather. Such important stuff in my book "

Laura Day (fifth from left) with members of the Crochet Club.



THE DART

COMMUNITY ARTS CENTRE

To find out what's on at The Dart, please scan the barcode or see their website:

https://www.thedart.co.uk/



Helping Hand

By Jill Burrows

HEDGE End W.I. would like to thank the Town Council for awarding them a Community Grant.

The money was used to fund three morning meetings in the Old School House so that elderly members, who cannot turn out on dark evenings, could still feel part of The W.I. in the Winter.

Three speakers came including Ian Abraham who told us about jigsaws, Steve Tanti brought along very interesting artefacts and old postcards and James Nowak spoke about his life as an Olympian. After the talks, members paid for a hot lunch and, for some, this too was an enjoyable treat as they often ate on their own.

We thought that £200 was well spent and are grateful to the Town Council for this support.

If you would like to apply for a Community Grant from Hedge End Town Council, please see page 6.

COMMUNITY SPEEDWATCH

COMMUNITY Speedwatch is a volunteer scheme where members of the public assist Hampshire and Isle of Wight Constabulary to monitor traffic through their area and identify vehicles which exceed the speed limit.

Drivers receive a speed awareness letter from the police rather than a speeding ticket, although further action may be taken for repeat offenders. The focus of the scheme is on educating rather than enforcing and has already seen a drop in the rate of offending locally.

Around 100 groups are currently active across Hampshire and the Isle of Wight, with 1,000 volunteers involved.

More volunteers are needed. If you are interested in finding out more please contact Hampshire Police on speedwatch@hampshirepolice.uk

Meet Our Regular Hirers

WE HAVE many regular hirers across our five halls, including three preschools. Here they tell us a little about themselves.



Smiles Pre School at the Norman Rodaway Pavilion

By Carol Mason, Owner/Manager

Smiles is a family-owned pre-school with over 30 years of experience. We focus on ensuring children's safety, happiness, and educational growth. Staff are dedicated to providing new experiences and instilling a love of learning in the children.

We provide ample opportunities for the children to thrive in their early education, building the skills required to be healthy, happy and confident individuals. Practical activities can be explored to help children reach their full potential.

Smiles is located near the Norman Rodaway playing fields and the recently refurbished play area, allowing for a 'holistic approach' towards children's education. The school is registered as "Good" with Ofsted.



Contact : 07866 130828
smilespreschool@hotmail.co.uk
Facebook- Smiles Pre School
Hedge End

Little Drummers Pre School at the Drummond Community Centre

By Kirsty Simpson, Pre School Manager



Little Drummers is a term-time only pre-school with a small dedicated team of well trained staff. We have a strong team of 6 staff members, who work very closely with the parents to provide a child-centred approach to our childcare service. We pride ourselves in always putting the children at the forefront of our care.

We provide a range of activities to nurture every child's emotional, intellectual and physical wellbeing through exploration and experimentation with an environment that focuses on the importance of learning through play.

It is our belief that we are not preparation for the next step but the foundation for your child's future learning, and therefore regard this stage in your child's development as vitally important.

Contact: 07971 647019 or
023 8178 4187

www.littledrummerspreschool.co.uk



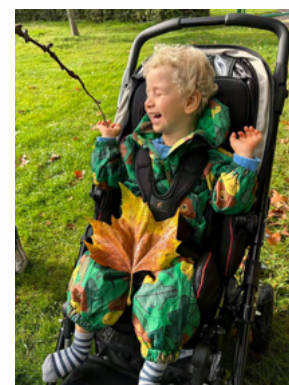
Wildern Opportunity Group at the 2000 Centre Small Hall

By Lucy Smith, Setting Manager

We offer an inclusive and stimulating pre-school where children learn through play, exploration and supportive relationships. We follow the principles of the Early Years Foundation Stage curriculum.

Our child-centred approach and nurturing environment ensure that the needs of each child are met, and we work closely with parents and professionals. As a charity pre-school, we reinvest our profits into providing high staff ratios, sensory and specialist play equipment, and an enriched environment for all children, including those with special needs.

Referrals are accepted for children within the Southern Parishes area, and we offer 1:1 care from trained staff with qualified SENCO support.



Contact: 01489 787968
www.wildernopportunitygroup.co.uk



There's plenty to do in the community this Spring. Most of the clubs and activities are happy to accept new members. Please use the contact details to make sure each club is running.



ARTS & CRAFTS

Calligraphy

Beginners welcome
Wednesdays 1.15 - 3.15pm
2000 Centre
mary.noble@btinternet.com

Southampton Quilters

First Thursday of the month.
Underhill Centre 7 - 9pm
Call Dee 07502 620521 or
dee.oneill@ntlworld.com

Arts & Craft Club

Tuesdays 1 - 3pm Hedge End Village Hall
Call Vicki 07494 595133 or Jo 023 8046 4170



SPORT & EXERCISE

Dragon Choi Kwang Do

Tues 6-7pm/Thurs 6-8pm
2000 Centre
Call Martyn 07926 564884

Over 50s Flexercise

Weds 10am to 11.00am
Hedge End Village Hall
Call Carol 07936 788531

Hatha Yoga

Mon and Weds evenings
Turnpike Pavilion
Call Laura 07866 459208

Yoga-based Pilates

Mon 10am, Fri 10am
Village Hall. All ages/abilities
Call Elaine 07967 631739

Rebecca May Yoga

Mon 8.05pm/Tues 7.35pm
Old School House
Call Rebecca 07912 139151
info@rebeccamayyoga.co.uk

Lauren Gray Yoga

Mondays 6.30pm
2000 Centre
Call Lauren 07495 446379

Pilates - Move With Mollie

Classes Monday - Friday.
Various times and locations
Facebook: @MoveWithMollie
Email:
info@movewithmollie.co.uk



MUSIC & DANCE

Sally Johnson Dance Academy

Ballet, Tap, Modern
Saturdays 9am - 12pm
Drummond Centre
Call 023 8025 5415

New Music Makers

SATB Choir
Thursdays 7pm
Hedge End Methodist Church
Call 023 8049 0450

Sing Now Choir

Thurs 7-9pm Hedge End Village Hall.
www.singnowchoir.com

West End Singers - Mixed Voice Choir

Wednesdays 7.45pm
2000 Centre
www.westendsingers.co.uk
Call 023 8040 4881

Steppin' UP

Street, hip hop dance.
Wednesdays. Salvation Army Church.
Call 07833 515839
www.steppinup.co.uk

Hedge End Indoor Bowls

All abilities. Weds 2-4pm and
Sundays 7-9pm. Free taster
sessions. Call Paul 07914
987581

Zumba Kids with Janine

Saturdays
10.30 - 11.30am
4-11 year olds
Norman Rodaway Pavilion
Call Janine 07808 843779

Zumba with Kay

Mon and Tues evenings
Various locations.
Adults/children.
Call Kay 07585 577598.
Facebook:
@ZumbaFitnessWithKay

Seniors Table Tennis

Thursdays 2.30-4.30pm in the 2000 Centre
Call Penny 01489 788237

Hedge End Bowling Club

Beginners welcome.
Equipment provided
pls wear flat shoes.
Call Club Secretary
Alex Ross on 01489 787994
www.hebc.uk

Junior Park Run

Sundays 9am Dowd's Farm
Register in advance.
www.parkrun.org.uk/
dowdsfarm-juniors/

Southern Knights Kickboxing

Weds 7.30pm - 9pm
Over 16s/Adults,
Drummond Centre
Call David 07768 647328



COMMUNITY CLUBS

Hedge End Horticultural Society

3rd Monday monthly
2000 Centre
Call 023 8047 1906.

Over 60s Club

New members welcome.
Mondays 1pm-3.30pm
2000 Centre
Call 01489 311333

Good Companions

Tuesdays 1-3pm
2000 Centre
Call David 07712 836696

Hedge End Town Council Junior Youth Club

School Years 5-6
Fridays, The Hub at Wildern
Places limited. Email:
YouthTeam@hedgeend-tc.gov.uk

Hedge End Town Council Friday Night Project

For young people with
additional needs. By Referral.
13 to 24 years. Email:
YouthTeam@hedgeend-tc.gov.uk

Lunch Club

Thursdays.
Members only.
2000 Centre
Call Sarah 07899 717755

31st Itchen North Scout Group

Beavers/Cubs/Scouts
Norman Rodaway Pavilion
amazonseascouts.org.uk

Hedge End Rotary

Meets 1st & 3rd Tuesday at
the Hub - Wildern School,
Wildern Lane. Call 07887
369039 for information.

Women's Institute

4th Tues monthly, 6.30pm
2000 Centre
Call Jill 023 8061 6712

Girlguiding Itchen Valley

Rainbows / Brownies:
2000 Centre
www.girlguiding.org.uk

Botley, Hedge End & District u3a

For retired & semi retired
people. Meets at 1.30pm on
the second Wednesday of the
month. Contact:
bhedistrict.u3a@gmail.com

If you'd like to see your club advertised in the Gazette, please email: marketing@hedgeend-tc.gov.uk

CONTACTS AND COMMITTEES



Hedge End Town Council
2000 Centre
St John's Road
Hedge End
SO30 4AF



Town Clerk: townclerk@hedgeend-tc.gov.uk
General: commsofficer@hedgeend-tc.gov.uk
Gazette: marketing@hedgeend-tc.gov.uk



01489 780440



Office hours:
Mon - Thurs **8.30am - 5pm**
Fridays **8.30am - 4.30pm**
Weekends & Bank Holidays: **Closed**

COUNCIL COMMITTEE MEETINGS

All committee meetings are held at the Town Council Office.

All meetings are formal, yet friendly and members of the public are encouraged to attend.

All meetings begin at 7pm, except Highways & Planning on the third Wednesday, which starts at 6.45pm ahead of Full Council which starts at 7.30pm.

COMMITTEE	MAR	APR	MAY	JUNE
Policy & Resources First Tuesday monthly	5th	2nd	7th	4th
Recreation & Amenities Second Weds monthly	13th	10th	8th	12th
Highways & Planning First & Third Weds* monthly	6th, 20th	3rd, 17th	15th**	5th, 19th
Full Council Third Weds monthly	20th	17th	15th	19th

*The Highways and Planning Committee meeting held on the third Wednesday will determine planning applications **only**.

** The Highways and Planning Committee meeting on 1st May has been cancelled due to Local Government Elections.

KEEP UP TO DATE

with the latest council and community news via our social media channels:



[HedgeEndTC](https://www.facebook.com/HedgeEndTC)



[@HedgeEndTown](https://twitter.com/@HedgeEndTown)



[HedgeEndTownCouncil](https://www.linkedin.com/company/HedgeEndTownCouncil)



www.hedgeend-tc.gov.uk