

ISSUE 88 WINTER 2022

WWW.HEDGEEND-TC.GOV.UK

# GAZETTE

FREE

**HEDGE·END**  
TOWN COUNCIL

*Mourning the Monarch*  
Tributes to Queen Elizabeth II

**HELP TO  
STAY  
WARM  
THIS  
WINTER**

**Happy 100th Birthday  
Hedge End Allotments!**

**SOCCER  
CUP  
CHAMPS**

*Who are the  
Hedge End Heroes?*

*Countdown to Christmas in Hedge End*

# HEDGE END TOWN COUNCILLORS



**Berrywood**  
Ian Corben  
07561 343858



**Berrywood**  
Rupert Kyrle  
02380 407045



**Dodwell**  
Tonia Craig  
02380 404680



**Freegrounds**  
Helen Corben  
01489 692406



**Freegrounds**  
**Chair: Personnel & Strategy Committee**  
Keith House  
07768 357918



**St Helens**  
Cynthia Garton  
01489 797213



**St Helens**  
**Chair: H & P\***  
Paul Carnell  
01489 785216



**St Helens**  
**Vice Chair of Council**  
John Shepherd  
07879 836282



**St Johns**  
Sheila Baynes  
01489 690126



**St Johns**  
**Chair: R & A\***  
Jane Welsh  
01489 784962



**Shamblehurst**  
Lucy Jurd  
07730 072606



**Shamblehurst**  
Ron Nichols  
07981 852901



**Station**  
Dave Kinloch  
07875 232557



**Station**  
James Mitchell  
0800 316 3435



**Station**  
**Chair: P & R\***  
Derek Pretty  
01489 797213



**Wellstead**  
**Chair of Council**  
Cliff Morris  
07848 946822



**Wildern**  
Margaret Allingham  
01489 798646



**Wildern**  
John Jupe  
01489 780293

**P & R\*** = Policy & Resources Committee    **R & A\*** = Recreation & Amenities Committee  
**H & P\*** = Highways & Planning Committee

There are currently vacancies in these wards:  
**Berrywood, St John's, Wellstead and Wildern.**

The vacancies will be filled at the next ordinary election of councillors on 4th May, 2023.

(Email: [Firstname.Lastname@hedgeend-tc.gov.uk](mailto:Firstname.Lastname@hedgeend-tc.gov.uk))

# Hello From The Chair



WELCOME to the Winter Gazette. It seems like only yesterday that I was writing my first column as Chair of the Council, looking forward to the events planned for the Platinum Jubilee and, here I am now, writing my penultimate one.

Since I first wrote, the situation has changed. We have had the sad death of Her Majesty, the period of mourning and the Accession of King Charles III (not to mention the political changes). However, events to mark the Jubilee continued with a tree planting in St John's Rec.

Whilst initially intended as a celebration, it will also serve as a lasting tribute to the Queen. However, my skills with a shovel (poor as they are) did not end there, as the Council was due to hold a Queen's Green Canopy event planting 450 trees in Dowd's Farm.



Once again I would be required to dig and fill in holes, helping to ensure we keep our green spaces green for future generations of local residents.

In October we celebrated the 100th Anniversary of Hedge End Allotments (see pages 8 and 9) and I would like to take this opportunity to say thank you to those members of the Hedge End Allotment Association who invited me to share the celebration with them.

It was a privilege to lay a wreath at the Hedge End Cenotaph on behalf of the Council during the Remembrance Sunday Parade in St John's Road.

With all that has happened this year, it provided an opportune moment for reflection for everyone who took part.



Finally, before I end this brief note, may I take this opportunity to offer you all Season's Greetings and to wish you a happy festive period.

*Cllr. Cliff Morris, Chair of Council*

## The Town Clerk's Desk



AS WE go to print many of us have been enjoying the exceptionally warm weather during October and into November. I am sure many people will be relieved that this prolonged the time before they needed to switch on their heating.

The cost of living is certainly a worry. Organisations around Hedge End are helping by offering warm spaces for people to go and get a hot drink and keep warm. There is more about this on page 11.

The mild weather has had an impact on the parks, open spaces and hedges. New growth late in the season means the Grounds Staff were still out hedge trimming, mowing and doing general maintenance which put other scheduled works back.

It's been a busy year for the council, covering many areas and different types of work. We've tried to give you a snapshot of what we do on page 7 - from looking after the public toilets, which are open seven days a week, to seasonal jobs like the ever-popular Paddling Pool.

Our thanks to Ricky Butterworth who took the lovely photograph of Dowd's Farm pond on the cover of this edition of the Gazette.



If you would like the chance of having your photograph published in the Gazette, then please email [marketing@hedgeend-tc.co.uk](mailto:marketing@hedgeend-tc.co.uk) and I am sure we will endeavour to publish as many as we can.

I'm really pleased to say that the refurbishment of the Norman Rodaway Play Area finally came to fruition after delays with supplies, installers, the weather and theft of machinery from the site.

And finally, as this will be the last edition before Christmas, on behalf of the staff we wish you a Merry Christmas and a Happy New Year.

*Sarah Jelley, Town Clerk*

## Hedge End Mourns Her Majesty

### *Tributes to Queen Elizabeth II*



WITHIN HOURS of the announcement that Her Majesty Queen Elizabeth II had died, people began leaving floral tributes on The Platinum Jubilee bench in the village centre.

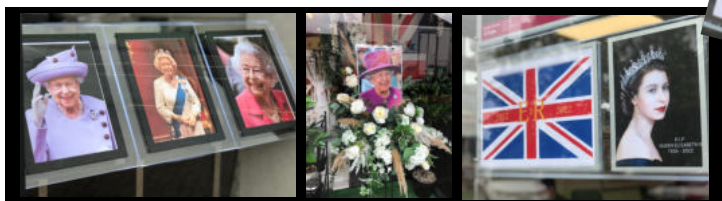
Throughout the ten day mourning period, the Jubilee bench became the focal point for flowers, cards, Paddington Bear toys and messages, many thanking the Queen for her 70 years of service.



A Book of Condolence was opened at the Hedge End Town Council offices. Among those who came to sign the book was 87 year old Lilian Wania, who could remember the Queen's father, King George VI. She said "It is such a loss, but what a wonderful life. We were so privileged to have her." All cards and messages have been archived by the Council.



Councillors and Council staff laid a wreath outside the Town Council offices at the 2000 Centre. In October, Chair of the Council, Cllr. Cliff Morris planted a tulip tree in memory of the Queen accompanied by Cllr. Cynthia Garton, Cllr. Jane Welsh and Cllr. John Jupe at the St. John's Recreation Ground, where just a few months earlier residents had come together for a picnic to celebrate her Platinum Jubilee.



Tributes in Hedge End shop windows

Clockwise L-R: Residents Jean and Tony Jenkyns sign the Book of Condolence; one of many tributes written in the Book; Councillors and staff laying a wreath; tributes left on the Jubilee bench.

## Play Starts at Rodaway

### *Play Area upgrade gets underway*

WORK is nearing completion on the new Norman Rodaway Play Area. Contractors were on site throughout November clearing the area and installing the new equipment.

Based on the consultation feedback from residents, the play park is being extended to 11 items of equipment in total. A few of the original HAGS pieces have been retained as they were in good working order. Brand new safety surfacing will be installed as well as new seating, bins and an additional gate. The fencing has been replaced with a more robust, modern style fencing which has been specially designed for this kind of environment.

The new play equipment from Sutcliffe Play Ltd is British built, in a factory in Yorkshire.

Despite theft of machinery from the site and challenging weather conditions, it's hoped it will be on schedule.



Cllr. Tonia Craig said "Another fantastic delivery of improved play equipment for our residents and their families. This will give children the opportunity to exercise and have fun together for years to come."



Work in progress at the Norman Rodaway Play Area.

## *Nominate* a local star for an award



Cllr Margaret Allingham with Alice Bound

THE SEARCH is on to say a public thank you to individuals in Hedge End who have gone above and beyond to help people and make a positive difference.

Nominations are now open for both our Serving the Community and Young Person's Serving the Community Awards for those under 25.

Cllr. Margaret Allingham said "We want to recognise the wonderful people we have in Hedge End who help others, perhaps by doing their shopping or helping in the community, like running a local club."

Alice Bound, aged 23, was last year's Young Person's Award winner. She was nominated for her voluntary work at Brownies and Girl Guides and helping out at the Town Council Youth Group.

Alice said "I was really surprised to be nominated but it meant a lot to me and made me feel very proud. I enjoyed my time as a Brownie and Girl Guide so much that, when I left, I became a leader to give back and help others have the same opportunity.

"If you think someone deserves this award, I would say - do it! Nominate them as it will mean so much to them."

This year it's quicker and easier to nominate and the winners will receive a gift voucher of their choice - £100 for the Serving the Community Award and £50 for the Young Person's Award.

**The closing date is 31st January 2023.**



Details can be found on our website  
[www.hedgeend-tc.gov.uk](http://www.hedgeend-tc.gov.uk)  
 Nomination forms can be downloaded or collected from our offices in the 2000 Centre.



## Council Tackles Anti-Social Behaviour



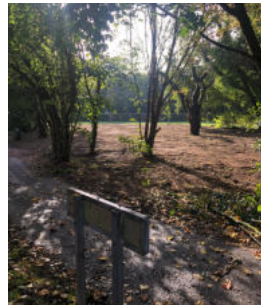
Cllr. Ian Corben (right) with contractor Thomas Wren at the Drummond Centre. Inset: The bund.

THE EARTHEN embankment around the Drummond Centre has been removed as part of ongoing measures to tackle anti-social behaviour. This area will now be fenced off and landscaped, with two trees planted for every one removed.

Removing the bund has created more visibility. In recent months the Council has spent £1,000 on replacing broken windows as well as dealing with graffiti and other breakages around the site.

The extracted soil has been used to infill a previously cordoned off area at Beattie Rise, which was inaccessible to residents. This will be grassed over and more trees added.

Cllr. Ian Corben said "The difference to both areas is incredible. We have wanted to address the bund for a long time, but the cost of removing and disposing of the the soil was prohibitive. However, by using it to landscape Beattie Rise we are addressing anti-social behaviour whilst enhancing two areas in Hedge End."



The soil has been used to make this area in Beattie Rise more accessible to residents.

## Oh! Christmas Tree!

IT TRULY feels like Christmas once the tree goes up, and Hedge End's 30 feet tree arrived to much excitement last month.

The towering Norway spruce forms the centrepiece of the Christmas Lights Switch On, as the town celebrates the festive season with a fantastic display of lights, a Christmas Village Market, entertainment and free arts and crafts. Not forgetting a visit from Santa, organised by the Hedge End Rotary Club.



Cllr. James Mitchell said "It's great to be part of the Christmas Lights Switch On. It's a fantastic event which brings together all parts of our community and is an excellent way to kick off the festive season."



## Boundary Review

RESIDENTS' views have been sought by Eastleigh Borough Council on plans to redraw the boundaries of Hedge End Town Council wards and change the number of councillors. Two consultations have taken place. The Administration Committee was due to make a final recommendation in November. Any changes will be implemented before the Town Council elections next year.



## Hedge End Village Market

LOOKING for the perfect Christmas gift? There's lots on offer at the Hedge End Village Market including jewellery, cards, sweets, toiletries, books, homeware, dog treats, plants, nuts, olives, preserves, pies, bread and more. It takes place at the former Budgens supermarket site 10am until 3pm every Wednesday until 21st December. It will take a break for the winter months.

## Serving the *Community*

IT'S BEEN a busy 2022 looking after Hedge End parks, play areas, the Paddling Pool, our buildings, sports facilities and public toilets, our footpaths, nature reserves, ponds and woodlands as well as staging events for the community including the Hedge End Village Market, Remembrance Sunday Parade, Christmas Lights Switch On, The Platinum Jubilee and Queen Elizabeth II memorial tree planting.

*We wish all our residents a happy and healthy 2023.*



*Getting ready for the Jubilee*



*Installing the Jubilee bench*



*Maintaining play areas*



*Removing graffiti*



*Installing new bins*



*Planting*



*Litter Picking*



*Clearing paths in woodlands*



*Grass cutting in 11 parks*



*Paddling Pool preparations*



*Looking after our buildings*

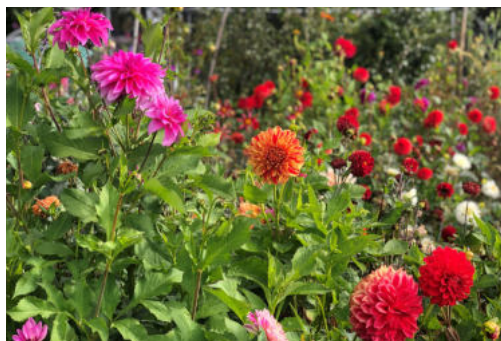


*Paddling Pool maintenance*

## A HUNDRED YEARS *and still growing*

### Hedge End Allotments Celebrate Their Centenary

A CENTURY ago, on **16th October 1922**, Hedge End Town Council agreed to purchase two fields from Mrs Campbell from the Thornhill Estate. The council paid £1,550 for the land, after securing a loan from Hampshire County Council. These fields were divided into plots and today form the Kanes Field and Spring Field allotments.



## Plotting The History

ALLOTMENTS existed at the Thornhill Estate prior to 1922, but in that year the then Hedge End Parish Council (now Hedge End Town Council) decided to purchase the land.

There had previously been allotments at **Woodhouse Lane** and **Dowd's Farm**. The Dowd's Farm allotments were on land leased by the Council from Queen's College, Oxford. It's suggested that their closure was due to improper or under cultivation from plot holders. Notice was given to the tenants in July to pack up their plots by Michaelmas (29th September) 1928.

The land at Woodhouse Lane was owned by **Mr T. H. Foord**. After his death in 1919, his property and the land leased to the Council for allotments was sold. There were also allotments off St John's Road, but it's unclear what happened to them.

**The Hampshire Telegraph** reported in 1922 that the demand for allotments in Hedge End was "large" and "unsatisfied". The Parish Chairman at the time, Mr Lewry, felt this demand was natural, given that Hedge End was largely populated by agricultural labourers who farmed or grew fruit. Many wanted the chance to cultivate food for themselves but did not have access to their own land.

Hedge End Parish Council formally signed the agreement to buy land at the Thornhill Estate on **22nd December 1922**.

The Council gave applications for plots from agricultural workers priority over tradesmen and those of other incomes. Preference was also given to married men over single men, who were considered more likely to stay in the village due to their family ties.

In 1934, the **Hedge End Allotment and Gardens Association** was formed, which met weekly. By 1936 it was agreed that allotment holders were no longer allowed to keep fowl on their sites, due to frequent escapees! By 1939 the allotment demand had dropped and the Kanes Field allotment was largely unattended. There were even discussions about selling the site and, for many years, Spring Field was used for grazing. Today, there is a waiting list for plots.

### Our thanks to Laura Weller for her research.

"IN 2022 it's a pleasure to be a part of the Hedge End Allotments. I have held a plot on the Spring Field site since July 2018.



Laura and Ken

I have learnt so much from the small community of plot neighbours who are always willing to share tools, seedlings and knowledge.

It's a wonderful space for my children to spend time outside and learn about cultivation and food production.

My allotment neighbour Ken has lived in Hedge End for over 70 years, a true Hedge Ender, and I love to hear his stories of early village life."

*Laura Weller*



ONE HUNDRED years on, past and present allotment holders gathered together to celebrate the Centenary on Sunday 16th October 2022.

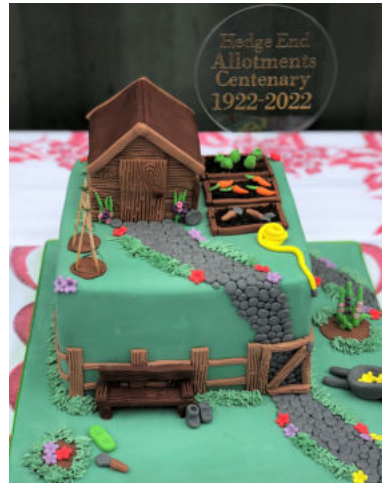
Chair of Hedge End Town Council, Cllr. Cliff Morris, was invited by the Hedge End Allotment Association to unveil a commemorative plaque and cut the impressive cake.

He said: "A century has passed and allotments are more relevant than ever - as a place to get outside, make friends and grow your own fruit and vegetables."

He was joined by Cllr. Jane Welsh, chair of the Recreations and Amenities Committee which is responsible for the allotments. She thanked everyone for their hard work on their plots and said "It's marvellous to have the allotments and we take great pride in them. As well as growing produce, they are fantastic for exercise and for people's wellbeing. They are in such demand that we now have around 40 people on the waiting list."



Cllr. Jane Welsh and Chair of the Council, Cllr. Cliff Morris, with Cocker Spaniel Alf; Commemorative plaque; Cake made by Cat Willson from Cat's Creations; Acrylic cake sign made by Sally Harling of Baked by Sally.



*Where friendships grow alongside the fruit and veg.*



Clockwise from L-R Cllr. Morris cutting the cake; Mei Lam and her shark fin melons; Eyden Blake and her family's 9ft sunflower, Valerie and Andrew Bearryman with Nelly the French Bulldog; Chair of Hedge End Allotments Association Maria Ross; Alice aged 7 and Lily aged 6; Salvatore Colella, who has held an allotment for 26 years; Patrick McVeigh and Amy and Danny Thomas.



The Centenary event was organised by Maria Ross, Chair of the Hedge End Allotment Association. She said "It's a real community here, with many friendships made. We host seed-swapping events, plant and tool sales and our annual bbq. We're even hoping to go on outings together. This way everyone gets to know each other, not just their immediate allotment neighbours."

## Christmas in Hedge End ...



St John's Church, St John's Road, is hosting a number of special services throughout December.

**Sunday 18th December:** 4pm Carol Service

**Christmas Eve:**

2pm Messy Church and 4.15pm Nativity Service

11.30pm Midnight Mass (in church and live on YouTube).

**Christmas Day:**

9.30am Holy Communion (in church and live on YouTube).

Please call 01489 790048 or see their website for more details and how to watch online:

[www.stjohns-hedgeend.org.uk](http://www.stjohns-hedgeend.org.uk)



**Hedge End Salvation Army** will be serving **Christmas Lunch** providing a meal and good company for those who might otherwise be on their own.

Corps Officer Ian Davis said: "I think this year it will be as crucial as ever not just to get people together but together in a warm space."

It is essential to reserve a space so please contact Centre Manager Paul Northover on 01489 796491 or email [paul.northover@salvationarmy.org.uk](mailto:paul.northover@salvationarmy.org.uk)."

You can find contact details of all our local churches in Hedge End on our website [www.hedgeend-tc.gov.uk](http://www.hedgeend-tc.gov.uk)



**THE NEW MUSIC MAKERS**  
**A Fun Family Christmas Concert**  
**Saturday 10th December 2022**  
**2:30pm and 7:00pm**  
**Hedge End Village Hall SO30 0BP**

Book Online:  
[www.ticketsource.co.uk/new-music-makers](http://www.ticketsource.co.uk/new-music-makers)  
Box Office: 01489 781836

Tickets:  
Family: £5.00 **PRIORITY BOOKING**  
U16: Free **PRIORITY BOOKING**  
Adults: £2.50

See me at the Matinee

[WWW.NEWMUSICMAKERS.COM](http://WWW.NEWMUSICMAKERS.COM)  
REG. CHARITY: 1146455



**Hedge End Methodist Church** will be holding a Nativity Festival 'Do They Know It's Christmas?' featuring nativities from around the world. Thursday 8th until Sunday 11th December in the church in St John's Road.

**Christmas Eve Church Service:**

3pm: A Fun Family friendly service led by Christine Hughes exploring the nativity story. All welcome - come dressed as a figure from the nativity if you wish. Light refreshments after the service.

11.30 pm: A service of Holy Communion led by Rev John Hughes to welcome the coming of Jesus into the world.

## A Festive Treat for the Family at THE BERRY THEATRE

KIPPER the dog and his best friend Tiger go on an adventure in the snow – but on the way they lose their friend Arnold in a terrible storm. Will they find him? And will they find their way back home?

Slot Machine Theatre presents **Kipper's Snowy Day** at The Berry Theatre in Hedge End this December, the first ever stage adaptation of Mick Inkpen's well-loved books.

Filled with original songs and music, gorgeous puppetry and gentle humour, this warm-hearted Christmas show is perfect for children from the age of three and their families.



The show runs from 10th until 30th December. For more details please contact The Berry Theatre on 023 8065 2333 or [www.theberrytheatre.co.uk](http://www.theberrytheatre.co.uk) or scan the QR Code for the Box Office and Kipper Colouring Sheet.



## Stay Warm This Winter

HEDGE END LIBRARY is offering residents a warm space this winter. As part of a Hampshire County Council initiative, all their libraries are welcoming people to a warm and vibrant space to read, work, relax and socialise. Hedge End Library offers free wi-fi, free use of computers, board games and jigsaw puzzles and free storytime sessions for children.

Hedge End Library Team Manager Daniel Oliver said "We have comfy chairs and people can stay as long as they like. If they're cold, we'll make them a warm drink. We want people to know they are welcome here at the library."

Hedge End Library is open 9.30am-5pm Monday, Wednesday and Thursday and 9.30am-1.30pm Saturday.

**Eastleigh Borough Council is compiling a database of warm and welcoming places. To sign up your venue please email [community.development@eastleigh.gov.uk](mailto:community.development@eastleigh.gov.uk)**

ST JOHN'S CHURCH is welcoming people to a warm space, a hot drink and a biscuit at The Underhill Centre in St. John's Road every Tuesday from 1-3pm. Enjoy jigsaw puzzles, board games and books.

ST LUKE'S CHURCH in St. Lukes Close is offering a warm space every Wednesday from 2pm-4pm. All welcome.

## Help with the Cost of Living

CITIZENS ADVICE has a drop in service in Hedge End on Thursdays from 10am-12pm at the United Reform Church, St John's Road, SO30 4AB. Or call the Adviceline weekdays on 0344 411 1306.

HEDGE END FOOD BANK at Kings Community Church is open Monday and Thursday 10-1pm. If people do not have a referral they will discuss how best they can help. They are welcoming donations of tinned food which can be dropped off Monday to Friday from 8am-5pm or on Sunday mornings, or at The Co-Op or Lidl in Hedge End.

## Hedge End on TV

CELEBRITY chef Phil Vickery came to the Hedge End Allotments to film for ITV This Morning. Phil met with Laura Weller, Jess Hunter and their children and cooked lunch using their produce.



COMEDIAN Jason Mansford and Pudsey Bear from BBC Children in Need dropped into the Wildern Opportunity Group and Preschool. The preschool receives a grant from the charity which enables them to support local children with disabilities and their families.



## CONSERVATION IN HEDGE END

THE CONSERVATION Volunteers group was set up in 2016 to help improve wildlife and biodiversity on sites owned by Hedge End Town Council. The team meets once a month to carry out a wide variety of environmental tasks. Whilst relatively small in number, the group makes a real difference and it is a great opportunity to meet other local enthusiasts of all ages and abilities and work alongside Town Council staff.



Clearing Rhododendrons at Home Farm

January's task was clearing sapling trees and invasive scrub from a wet meadow area within the Wildern Local Nature Reserve. Without the group's efforts, this would revert to willow woodland and lose the wonderful diversity of marginal plant life.

In March, the team dug up invasive non-native species (INNS) including Laurel and Rhododendron at Home Farm woodland. These plants spread rapidly, outcompeting the natural plant life. July was very dry and the pond at Merlin Gardens had completely dried up, which made it easier to access to remove leaves, debris and litter and cut down sapling trees within the pond.



Conservation Volunteer Cllr. John Jupe with Council staff and some of the other members of the group.

By August the drought had become a serious threat for the wildlife in the ponds and water courses, so the group were at Coltsfoot Pond, removing silt and INNS to help create a deeper pond and increase future resilience to drought. In October they revisited the pond at Mescott Meadows. This forms part of the flood attenuation system for the area, but also has real potential as an oasis for wildlife. Over the last 18 months they have been clearing scrub and invasive saplings, repairing fences and creating pathways.

Cllr. John Jupe has been a member for several years. He said "I really enjoy it. It's a great way to get out in the fresh air getting exercise, whilst doing some good."

*If you would like to join in, please see the HETC website or email [officemanager@hedgeend-tc.gov.uk](mailto:officemanager@hedgeend-tc.gov.uk) for more details.*

## CHURCHES GAIN ECO AWARDS

GREEN endeavours have paid off for St Luke's Church in Grange Park where members have worked hard to receive 'Silver' status from A Rocha - an organisation which encourages churches to become greener and more eco conscious. Members are ensuring the buildings are as carbon neutral as possible and have situated a bug hotel in the grounds. Only local, garden and fairtrade flowers are used inside the church.

The new vicar Ben Jones said "I'm delighted to have come to a church that takes caring for the environment so seriously."

Meanwhile, Hedge End Methodist Church has been awarded 'Bronze' status and are close to 'Silver'. Recent eco-friendly activities have included a group litter pick, a bug hotel and planting a wild flower garden at the church.

## COMMUNITY WOODLAND



HEDGE END Town Council has been gifted 450 trees from the Woodland Trust to plant a Community Woodland at Dowd's Farm.

The native saplings were donated as part of The Queen's Green Canopy initiative and the woodland will be dedicated to the memory of HM Queen Elizabeth II.

Species planted include oak, hawthorn, dogwood, wild cherry, silver birch, hazel, rowan and blackthorn. The planting was due to take place in November.



# Winter Reading Ideas

from Hedge End Library

*Frosty mornings, pubs with fires, woolly hats and snuggling under a blanket with a good book.*



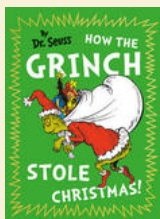
### This Time Next Year by Sophie Cousens

Quinn and Minnie are born on New Year's Eve, in the same hospital, one minute apart. 30 years later they meet up by chance.



### The Last Winter by Porter Fox

The author details how, in 50 years, the Northern Hemisphere has lost a million square miles of spring snowpack, with snow cover reduced by 15-30%.



### How the Grinch Stole Christmas by Dr Seuss

The story of the disgruntled Grinch and his fiendish attempts to steal Christmas from the citizens of Whoville.



### The Complete Chronicles of Narnia Audiobook by C.S. Lewis

The Classic BBC Radio 4 Full-Cast Dramatisations of the magical tales including The Lion, The Witch and the Wardrobe.



### Better Than Before by Gretchen Rubin

New you for the New Year? Best selling author Gretchen Rubin details what she's learned about making and breaking habits and build a happier life.



### Christmas Cookbook by Jamie Oliver

Classics for the big day and beyond, as well as recipes for edible gifts, party food and new ways to love the leftovers.

All the books are available from Hampshire County Council Libraries Service.

## SPORT

# Top of their Game

*Report by Club Secretary Dave Helps*

HEDGE END Town Football Club is celebrating its 20th season as the current Southampton Saturday Senior Premier League and Cup Champions.

Established in 2002, the team started out in the junior division with local players at Greta Park. It progressed through the divisions and, after several campaigns in the Senior Premier Division, this Summer they won the league and cup double, triumphant in 17 out of 18 league matches, keeping 15 clean sheets in all competitions. They have now been promoted to the Hampshire Premier Football League and expanded to include a reserve and veterans teams.

You can watch the first team and reserve team play alternate Saturdays at Norman Rodaway. The Veterans play at the Mount Pleasant Rec in Hamble. For more information and fixtures, please see [HPFL.co.uk](http://HPFL.co.uk) or [HETFC.co.uk](http://HETFC.co.uk).



# WHAT'S ON



As we move into Winter and the New Year, how about taking up a new hobby or sport for 2023? Please use the contact details on our What's On guide to make sure each club is running and can accept new members.



## ARTS & CRAFTS

### Arts & Craft Club

Demos & outings  
Tuesdays 1.30 - 3.30pm  
Hedge End Village Hall  
Call Joan 01489 798233

### Flower Club

Demos & workshops  
First Tues monthly 7pm  
2000 Centre  
Call Sarah 07899 717755

### Calligraphy

Beginners welcome  
Wednesdays 1.15 - 3.15pm  
2000 Centre  
mary.noble@btinternet.com

### New Music Makers

SATB Choir  
Thursdays 7pm  
Hedge End Methodist Church  
Call 023 8049 0450



## MUSIC & DANCE

### Glee Club

Mondays 7.15 - 8.45pm  
Singers all ages & abilities  
Drummond Centre  
Call 07810 127351

### Performing Arts

**Company Youth Drama (ages 14-30)**  
Sundays  
Old School House  
Call Barbara 01489 690140

### Sally Johnson Dance Academy

Ballet, Tap, Modern  
Saturdays 9am - 12pm  
Drummond Centre  
Call 023 8025 5415

### West End Singers - Mixed Voice Choir

Wednesdays 7.45pm  
2000 Centre  
www.westendsingers.co.uk  
Call 023 8040 4881



## SPORT & EXERCISE

### Dragon Choi Kwang Do

Thursdays 7pm  
2000 Centre  
Call Martyn 07926 564884

### Lauren Gray Yoga

Mondays 6.30pm  
2000 Centre  
Call Lauren 07495 446379

### Over 50s Flexercise

Weds 10am and 11.15am  
Hedge End Village Hall  
Call Carol 01489 781616

### Hatha Yoga

Mon/Weds evenings  
Turnpike Pavillion  
Call Laura 07866 459208

### Pilates - Move With Mollie

Classes Monday - Friday.  
Various times and locations  
(and Zoom). All Ability.  
Facebook: @MoveWithMollie  
Email: info@movewithmollie.co.uk

### Pilates

Mon 10am, Fri 10am  
Village Hall. All ages/abilities  
Call Elaine 07967 631739

### U3A Gentle Exercise

Wednesday mornings  
Village Hall  
Call Joan 01489 798233

### Zumba with Kay

Tues/Thurs evenings  
Various locations.  
Adults/children.  
Call Kay 07585 577598.  
Facebook: @ZumbaFitnessWithKay

### Zumba Kids with Janine

Saturdays  
9.15am: 4-7 year olds  
10.05am: 7-11 year olds  
Norman Rodaway Pavilion  
Call Janine 07808 843779

### Junior Park Run

Sundays 9am  
Dowd's Farm  
Free but must register in advance.  
www.parkrun.org.uk/dowds-farm-juniors/

### Steppin' UP

Steppin' UP - street, hip hop and commercial dance classes. Wednesdays. Salvation Army Church. Various classes for children and adults. Call 07833 515839  
[www.steppinup.co.uk](http://www.steppinup.co.uk)

### Seniors Table Tennis

Thursdays 2.30 - 5pm  
2000 Centre  
Call Penny 01489 788237

### Southern Knights Kickboxing

Sat 10am Children/Adults  
2000 Centre  
Weds 7.30pm - 9pm  
Over 16s/Adults,  
Drummond Centre  
Call David 07768 647328



## COMMUNITY CLUBS

### Hedge End Horticultural Society

3rd Monday monthly  
2000 Centre  
Call 023 8047 1906.

### Over 60s Club

New members welcome.  
Mondays 1pm-3.30pm  
2000 Centre  
Call 01489 311333

### Good Companions

Tuesdays 1-3.30pm  
2000 Centre  
Call David 07712 836696

### Lunch Club

Thursdays.  
Members only.  
2000 Centre  
Call Sarah 07899 717755

### 31st Itchen North Scout Group

Beavers/Cubs/Scouts  
Norman Rodaway Pavilion  
amazonseascouts.org.uk

### Hedge End Rotary

Meet Tuesdays at Botley Park Hotel, Winchester Rd  
Call 0844 879 9034

### Hedge End Town Council Junior Youth Club

School Years 5-6  
Fridays, The Hub at Wildern Places limited.  
Call to book 01489 780440

### Hedge End Town Council Friday Night Project

For young people with additional needs.  
13 to 24 years.  
Call to book 01489 780440

### Women's Institute

4th Tues monthly, 6.30pm  
2000 Centre  
Call Jill 023 8061 6712

### Girlguiding Itchen Valley

Rainbows / Brownies:  
2000 Centre

Guides:  
Norman Rodaway Pavilion  
www.girlguiding.org.uk

If you'd like to see your club advertised in the Gazette, please contact: [marketing@hedgeend-tc.gov.uk](mailto:marketing@hedgeend-tc.gov.uk)

The Town Council has FIVE community buildings which are great venues for regular groups and clubs, or for one-off private event hire.

Each hall has tables and chairs available with a variety of capacities (see below); fitted kitchens with facilities such as microwaves, cookers, water heaters (facilities vary by hall); disability access and toilets (DDA) and car parking. All our halls are professionally maintained by our efficient and friendly team of caretakers.

More information on each hall is available online at [www.hedgeend-tc.gov.uk/halls-for-hire](http://www.hedgeend-tc.gov.uk/halls-for-hire).

**Current fees:** Weekday: £19.81 ph / Weekend: £27.26 ph.

**To book:** please call 01489 780440 or email us at [commsofficer@hedgeend-tc.gov.uk](mailto:commsofficer@hedgeend-tc.gov.uk).



## 2000 CENTRE

St John's Road  
SO30 4AF

Capacity:  
Large hall 150 seated,  
Small hall 80 seated.



## NORMAN RODAWAY PAVILION

Heath House Lane  
SO30 2SZ

Capacity: 85 seated.



## OLD SCHOOL HOUSE

St John's Road, SO30 4AF

Capacity:  
Large hall 80 seated.  
Middle hall 50 seated.  
Small hall 48 seated.



## DRUMMOND CENTRE

Drummond Rd  
SO30 2AD

Capacity:  
Large hall 100 seated,  
Frank Vickers Hall 50 seated.



## TURNPIKE PAVILION

Turnpike Way  
SO30 4QR

Capacity 48 seated.



# CONTACTS AND COMMITTEES

## CHRISTMAS OPENING

Friday 23rd December: **8.30am - 4.30pm**  
Boxing Day Bank Holiday (26th): **CLOSED**  
Christmas Day Bank Holiday (27th): **CLOSED**  
Wednesday 28th: **8.30am - 5pm**  
Thursday 29th: **8.30am - 5pm**  
Friday 30th: **8.30am - 4.30pm**  
New Year Bank Holiday (2nd Jan): **CLOSED**



Hedge End Town Council  
2000 Centre  
St John's Road  
Hedge End  
SO30 4AF



Town Clerk: [townclerk@hedgeend-tc.gov.uk](mailto:townclerk@hedgeend-tc.gov.uk)  
General: [commsofficer@hedgeend-tc.gov.uk](mailto:commsofficer@hedgeend-tc.gov.uk)  
Gazette: [marketing@hedgeend-tc.gov.uk](mailto:marketing@hedgeend-tc.gov.uk)



01489 780440



Office hours:  
Mon - Thurs **8.30am - 5pm**  
Fridays **8.30am - 4.30pm**  
Weekends & Bank Holidays: **Closed**

## COUNCIL COMMITTEE MEETINGS

All committee meetings are held at the Town Council Office.  
All meetings are formal, yet friendly and members of the public are encouraged to attend.  
All meetings begin at 7pm, except Highways & Planning on the third Wednesday,  
which starts at 6.45pm ahead of Full Council which starts at 7.30pm.

COMMITTEE	DEC	JAN	FEB	MAR
<b>Policy &amp; Resources</b> First Tuesday monthly	6th	3rd	7th	7th
<b>Recreation &amp; Amenities</b> Second Weds monthly	14th	11th	8th	15th
<b>Highways &amp; Planning</b> First & Third Weds* monthly	7th, 21st	4th, 18th	1st, 15th	1st, 15th
<b>Full Council</b> Third Weds monthly	21st	18th	15th	15th

\*The Highways and Planning Committee meeting held on the third Wednesday will determine planning applications **only**.

## KEEP UP TO DATE

with the latest council and community news via our social media channels:



[HedgeEndTC](#)



[@HedgeEndTown](#)



[HedgeEndTownCouncil](#)



*Merry Christmas and a Happy New Year!*

[www.hedgeend-tc.gov.uk](http://www.hedgeend-tc.gov.uk)