

GAZETTE

FREE

HEDGE END
TOWN COUNCIL

Football focus
NEW SPORTS
FACILITIES IN
HEDGE END

On
your
marks,
get set,
go!

Parkrun at Dowds Farm

FREE ROYAL JUBILEE EVENT

PICNIC IN
THE PARK

*You're
Invited!*

IT'S BACK!

Hedge End
Carnival

Summer Reading with the Library

HEDGE END TOWN COUNCILLORS



Wildern

Margaret Allingham
01489 798646



St Johns

Sheila Baynes
01489 690126



Berrywood

George Brown
07841 685044



St Helens

Chair: H & P*
Paul Carnell
01489 785216



Berrywood

Ian Corben
07561 343858



Freegrounds

Helen Corben
01489 692406



Dodwell

Tonia Craig
02380 404680



St Helens

Cynthia Garton
01489 797213



Freegrounds

Chair: Personnel & Strategy Committee
Keith House
07768 357918



Wildern

Patricia Jenkins
01489 786265



Wildern

John Jupe
01489 780293



Shamblehurst

Lucy Jurd
07730 072606



Station

David Kinloch
07875 232557



Berrywood

Rupert Kyrle
02380 407045



Station

James Mitchell
0800 316 3435



Wellstead

Chair of Council
Cliff Morris
07848 946822



Shamblehurst

Ron Nichols
07981 852901



Station

Chair: P & R*
Derek Pretty
01489 797213

P & R* = Policy & Resources Committee

R & A* = Recreation & Amenities Committee

H & P* = Highways & Planning Committee



St Helens

John Shepherd
01489 692597



Wellstead

Anne Small
07900 255518



St Johns

Ben Thomas



St Johns

Chair: R & A*
Jane Welsh
01489 784962

(Email: Firstname.Lastname@hedgeend-tc.gov.uk)

Hello From The Chair ...



WELCOME to the Summer Gazette. I am truly honoured to be the Chair of Hedge End Town Council in this, The Queen's Platinum Jubilee year, and I count myself as very lucky to be able to represent the people of Hedge End.

I must pass on my thanks to my predecessor Cllr. John Jupe for all he has committed to the role.

When I was informed that, as the Chair of the Council, I had the opportunity to write an article for the Gazette, my first thought was what can I say? Do I make it all about me? However, that's not the point of this article or indeed my role. What I hope to do over the next year is to promote Hedge End, listen to what people say about the wonderful place in which we live, and see what we can do as a Council to make improvements and support residents.

So, what do we have in store for this year? Well, we hope to celebrate The Queen's Platinum Jubilee with appropriate events to mark the occasion - after all a Platinum Jubilee won't happen again in my lifetime!

There will, of course, be a ceremonial tree planting to mark the event and provide a lasting reminder. We are planning some family events across the Summer including our **Platinum Picnic in the Park** on Sunday 5th June. Please can I remind people that the Council doesn't allow bbqs on its parks.

However, this year is not all about the Jubilee.

The Council will continue its involvement in the community throughout the year, assisting with, and authorising, many local events.

The **Hedge End Carnival** will return this Summer, after a two-year break, and the **Dowds Farm Junior Parkrun** continues to thrive. One of the members of the Council's Youth Club recently won the **Young Persons Serving the Community Award**, to name but a few.

Hopefully, the next year will be all about looking forward and I would be delighted if all the residents get as much out of it as the Council hopes you will.

Cllr. Cliff Morris, Chair of Council

The Town Clerk's Desk



SUMMER is my one of my favourite times in the Council calendar. From the sun shining in our windows to the smell of freshly mown grass out on the Recreation Ground, it's definitely nicer to be out visiting the sites we manage now, than in the depths of winter.

Preparations for Summer started back in January with hedge cutting before the bird nesting season. Some of the outdoor spaces have had topsoil dressing as this is one of the few times of the year we can do it. We try not to do all areas at once as it makes them unusable while the seed is growing. In March we used 44 tonnes of topsoil in just three of our parks.

New gates have been installed at the Westward Road play area after a long wait from the suppliers. Over the past year it has been increasingly difficult to get supplies of goods and in some cases to find contractors, which has been frustrating.

Despite going out to tender for the Norman Rodaway Play Area, only one provider came forward. We will work with them to ensure the best value for money for Hedge End residents, but it severely limits our options.

The work of a Town or Parish Council often goes unnoticed and it's not something people really think about as they go about their business and yet it is varied, with no two days the same. We are struggling with staff shortages on the caretaking team and still have vacancies for a full-time supervisor and a weekend caretaker. In return we offer an excellent pension scheme, a rising salary scale and flexible working.

The Council held its Annual General Meeting in May and Cllr. Cliff Morris was appointed as Chair of Council. He will be the representative for the Council at events and preside at Full Council meetings. Chair of Council must be elected annually although they can do more than one term. We look forward to working with Cllr. Morris in his new role.

Sarah Jelley, Town Clerk

Recreation & Amenities Committee

Looking after our green spaces and outdoor facilities



I HOPE you are having a lovely start to the Summer. Let's hope for lots of sunshine for everyone to enjoy with their families.

The Town Council has replaced the digital chemical dosing system in the paddling pool this year to ensure the balance of chemicals remains accurate and efficient. We've also installed new dolphin bins, thanks to a Hampshire County Council grant.

There is still a very large waiting list for allotment plots, however, please don't let this deter you and if you are interested in growing your own fruit and vegetables, please contact the Town Council and add your name to the list.

We would like to thank those tending their family graves for following our new policy. We now ask that plastics are not brought into the Albert Road Cemetery at all and that any rubbish is taken home with you. We really appreciate you unwrapping flowers before placing them on graves.

With Berrywood Fields sports facilities almost complete, we are looking into sports provision across the rest of Hedge End. We are seeking community feedback on which sports facilities would be most beneficial to the area. Perhaps there is a need for additional football or are there other sports which would work? There are currently no rugby pitches available in the town, but is there a demand for one? We would love to hear from anyone with new ideas for the future of Hedge End.

Finally, you may have noticed that we are leaving certain areas of grass unmown within the open spaces. This is part of the Town Council's plan to support pollinating insects and help increase biodiversity. We have been increasing the areas left 'wild' year on year in the hope that we will see a much needed boost to the local insect and native plant populations.

Enjoy your Summer and I hope to see you at the Platinum Picnic in the Park.

Cllr. Jane Welsh, Committee Chair

Policy and Resources Committee

Looking after our income and expenditure

3



I'M DELIGHTED to see that the weekly Hedge End Village Market is back. It takes place every Wednesday between 10am and 3pm on the former Budgens car park and is now being managed by the Town Council.

After a few initial teething problems, we now have a steady number of stallholders and are looking for others to join them, particularly those selling bread, fish, meat, vegetables or cheese. If interested, please email market@hedgeend-tc.gov.uk

Each year the Council sets aside funds so that it is able to offer Community Grants. This year we are pleased to have been able to award grants to groups including 8th Hedge End Rainbows, 31st Itchen North Sea Scouts, Hedge End Flower Club and Hedge End Lunch Club.

We are starting work again on several strategies which were delayed due to Covid. These are designed to be more transparent in how we manage assets in the future.

This includes replacing our vehicles with electric where possible, the types of sports provision that might be needed within Hedge End and looking at provision for young people. We are also considering the management of the new sports pitches at Berrywood Fields.

Over the past few years Hedge End Town Council has taken on responsibility for many of our open spaces. There are a few small areas around the Wildern Local Nature Reserve which remain the responsibility of Eastleigh Borough Council. We are hoping these will be transferred to the Town Council to enable us to maximise the benefit of the nature reserve to flora and fauna .

In June, we will be looking for the Council to consider and agree the statement of accounts which has been prepared for external audit. The 2022/23 budget has already been published on the website.

Cllr. Derek Pretty, Committee Chair



Pack a Picnic and Let's Celebrate!

We hope you'll bring a picnic and join us on **Sunday 5th June** for our **Platinum Picnic in the Park** to celebrate The Queen's 70 years on the throne. **11.30am until 3pm** at **St. John's Recreation Ground, Hedge End.**



Free Music and Entertainment including ...

Magician

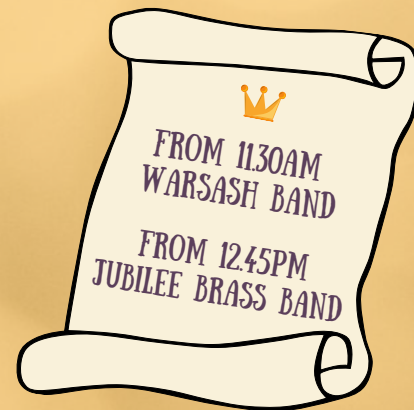


Colin Phillips will provide his unique style of close up magic, having performed across the world. He's a member of The Magic Circle and has lived in Hedge End for over 35 years.

Jubilee Brass Band



The aptly-named Jubilee Brass Band will play music from a variety of different musical genres.



Face Painting and Balloon Artist

Amy Jones from Creative Capers will be working wonders with colours and sparkles. She'll also be bringing along a balloon modelling artist to add to the fun.

Warsash Band



The Warsash Band will entertain us with their varied repertoire, including marches, musicals and much more!

Arts and Crafts

Make a Crown or a Royal Windmill with our Hedge End Town Council Youth Group.

Craft Crawl Market

Hosted by North Family Arts from 10am in the 2000 Centre.

Plus Rascals Castles Bouncy Castle, Paddling Pool, The Kiosk, Hampshire Fire and Rescue fire engine, Hampshire Police vehicle and Hedge End Social Club will be holding an Open Day. Please bring your own picnics. Bbqs are not permitted on any of the Town Council parks.

P No parking at the 2000 Centre. Please be considerate to local residents and park at the former Budgens car park.

Other Jubilee Celebrations:

Hedge End Primary Schools and our Youth Group have decorated the Bandstand to celebrate each decade of The Queen's reign, kindly sponsored by Minuteman Press. We've planted flowers around the Bandstand in the Jubilee colours of purple and white. An official Platinum Jubilee bench is being installed by the basketball court and a commemorative tree planted in St John's Recreation Ground. We are also planning to plant a Community Woodland in the Autumn. Our thanks to Hampshire County Council and Hedge End Carnival for grants towards the celebrations.



For more details please see our website: www.hedgeend-tc.gov.uk/community-news/the-queen-s-platinum-jubilee/

New Sports Facilities in Hedge End

LOCAL PEOPLE are soon to benefit from new sports facilities in Hedge End with exciting developments at Deer Park School and Berrywood Fields.

The project includes a full size 3G floodlit artificial football pitch, changing facilities and a multi-use activity hall at Deer Park School, and three new football pitches and a public open space at Berrywood Fields, near Woodhouse Lane. The facilities will be the new home for local football club Hedge End Rangers and their 38 teams from U7s to Vets, as well as being available for the wider community to hire.

It's been funded by Eastleigh Borough Council from financial contributions from developers of new homes, and has been delivered in partnership with Hampshire County Council.

Following a site visit, Cllr. John Jupe from Hedge End Town Council said "I was really impressed. It is a fantastic sports facility to have here in Hedge End."



Chairman of Hedge End Rangers, Marc Patch said "We are proud as a club to be partnering with Deer Park School and Eastleigh Borough Council to provide this tremendous facility to all our players, coaches, representatives, and spectators."

The facilities will be available for community hire from September.

the point EASTLEIGH The Berry Theatre

EASTLEIGH & HEDGE END ANYWHERE

UNWRAPPED

"...Excellent event and really proud I live in Eastleigh Borough"
AUDIENCE MEMBER 2021

ONE WEEKEND TWO EVENTS FREE FAMILY FESTIVAL

IN EASTLEIGH AND HEDGE END TOWN CENTRES

SATURDAY 11 JUNE	SUNDAY 12 JUNE
11AM – 4.30PM	11AM – 4.30PM
EASTLEIGH LEIGH ROAD RECREATION GROUND	HEDGE END GRETA PARK

@thepointeastleigh @thepointeastleigh @PointEastleigh

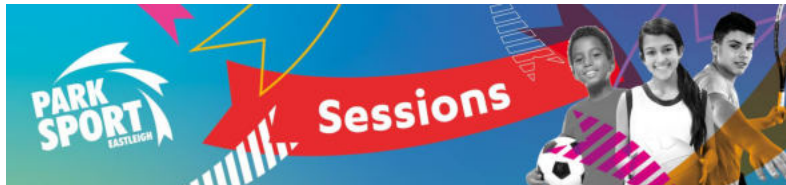
HEDGE-END EASTLEIGH BOROUGH COUNCIL ARTS COUNCIL ENGLAND

WWW.THEPOINTEASTLEIGH.CO.UK

SUMMER OF SPORT

PARK SPORT is set to make a return to Hedge End this Summer.

The scheme is a summer holiday programme of sport that runs across the borough and gives five to 16 year olds the opportunity to participate in accessible, inclusive and affordable sport and physical activity.



The SportWorks Team at Eastleigh Borough Council are still finalising the programme of activities which will be available, but there promises to be lots on offer. The programme will run for four weeks over the Summer holidays between the dates of **Monday 1st August until Friday 26th August.**

For more details please see www.eastleigh.gov.uk

Pool Rules
Let's ALL enjoy the Paddling Pool this Summer

- Under 12s Only
- Please be Considerate to Others
- Please don't Intentionally Splash Others
- Please Use the Bins Provided
- Please don't take Food and Drinks into the Pool Area
- No Glass in Pool Area
- Please leave by 5pm
- Please park in the former Budgens Car Park

Opening hours: 10.00am to 5.00pm

HEDGE END TOWN COUNCIL

A Star in our Community

CONGRATULATIONS to Alice Bound, Hedge End Town Council's Young Person Serving the Community Award winner for 2022.

Alice was nominated by the Council's Youth Team leader Sarah and youth worker Chloe. The 22 year old is currently training to be a Brown Owl and lead her very own Brownie pack. She helps out weekly with local Girlguiding groups, with trips and activities. Alice is also a valuable volunteer at Hedge End Town Council's Junior Youth Club.

"I felt really surprised and a bit shocked to win the award," said Alice. "I really enjoy the volunteering I do. I want to thank everyone who supports me in my volunteering roles."

Chloe said "Alice is great at building relationships with the young people and getting involved in the activities especially arts and crafts. She is an absolute pleasure to be around, she inspires us with her ever-lasting positivity and is a role model to all".

SERVING THE COMMUNITY



Alice being presented with her award by Mayor of Eastleigh Cllr. Cynthia Garton at the Annual Parish Assembly

Join Us!

We have volunteer opportunities at the Junior youth Club and Friday Night Project, which is a youth club for young people with mild additional needs. Volunteers support the planning and delivery of youth activities both at The Hub and out on trips and activities.

For more information and application form see <https://www.hedgeend-tc.gov.uk/the-council/volunteering>

A Safer Community

A COMMUNITY SPEEDWATCH scheme is successfully up and running in Hedge End, but more volunteers are needed.

The scheme is restricted to 20mph, 30mph and 40mph areas. The aim is to –

- Increase public awareness of inappropriate speed.
- Reduce the speed of vehicles to the legal limit.
- Reduce death and injury on the roads.
- Empower local people to take action on local issues.

PCSO Mica Woodcock said “There is a speed limit for a reason. The likelihood of death or injury at 30mph is drastically different to that at 40mph, for instance. The Community Speedwatch project is about keeping people safe.”

All volunteers are trained to use monitoring equipment and work alongside the police to record the speed of passing traffic, adding the details to a database. Letters are then sent to registered keepers advising them of their speed and reminding them why it is a community concern. So far 12 volunteers are fully signed up, with another six in training.

Volunteer Peter said “I joined the scheme as I was concerned about speeding where I live. There are lots of children playing out in the street and I fear someone’s going to get knocked down one day. How tragic, especially if it could have been prevented.”



Members of the Community Speedwatch Team at Maunsell Way

John, who is also a volunteer, said “I have spare time and I wanted to do something that would make a difference to where I live.”

Although Community Speedwatch focuses on being educational rather than enforcement, the information collected highlights where the problem areas are locally. The police may then target these roads - and speeding fines may be issued.

Along with PCSO Woodcock, the scheme is co-ordinated locally by Steve Cluer and Geoff Eavis. It covers all six Hedge End sector parishes - Hedge End, West End, Botley, Bursledon, Netley and Hamble.

If you'd like to get involved please email speedwatch@hampshire.police.uk

Carnival Time!

IT'S BACK! This Summer sees the return of the Hedge End Carnival after two years.

Committee Member Chloe McKell said "We are all really excited to be able to announce a full week of fun and entertainment to celebrate the delayed Centenary carnival.

"We've decided against a more formal theme and just want everyone to celebrate being together. So we're just so happy to be here, wearing bright colours and singing and dancing throughout Hedge End and enjoying being part of our amazing town.

"We have had loads of interest and support from people already but we are always looking for more local acts, stall holders and volunteers to help on the day."

A vibrant poster for the Hedge End Carnival's Centenary Week and Summer Fayre. The background is blue with a white and yellow striped pattern. The text is in various colors: yellow for the main title, red for the dates and event names, and white for the website. The events listed are: Saturday Family Barn Dance, Monday Quiz Night, Dog Show Wednesday, Adults Only Friday Band Night, Hedge End Carnival Day, and Family Chill Out Sunday. The website HedgeEndCarnival.org.uk is listed at the bottom.

Summer Sightings

There's plenty to see at Hedge End Town Council's Wildern Local Nature Reserve during the Summer ... but you need to look closely.

BUGS come into their own in the Summer, but with more than 650 insects and spiders recorded, including 28 butterflies and 22 dragonflies, narrowing down a selection is tough. Stop at Coltsfoot Pond jetty on a sunny June day and you will see Azure Damselflies. Less common is the Beautiful Demoiselle damselfly.



Throughout the Summer you stand a good chance of seeing a Common Blue butterfly.



A butterfly less common, but seen especially in Goodalls Meadow, is the Silver-washed Fritillary.



The Golden-ringed Dragonfly is the UK's longest. One of our members photographed one egg-laying over a stream, so they are probably breeding here.



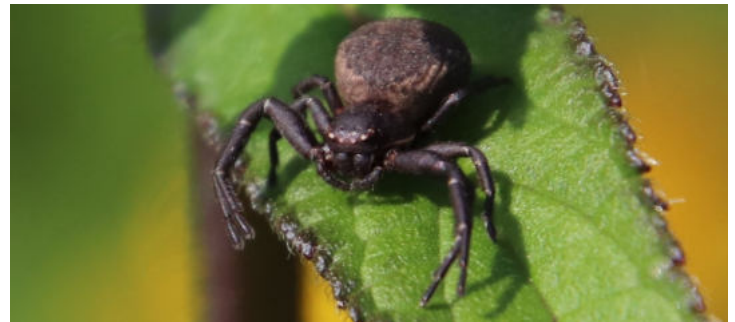
Of course, it's not all about bugs, so here are a couple of reptiles which feed on them. Wildern Moor has a healthy population of Common Lizards, seen very occasionally in the Goodalls Meadow and Coltsfoot Pond areas.



Slow-worms, I'm pleased to report, have been found in all parts of the nature reserve, though you'd have to be quite lucky to find one out in the open, as with the one here on sphagnum moss in Wildern Moor from last August.



And finally, is this a very rare spider for the UK? Two expert sources independently suggested it is *Bassaniodes robustus*, a crab spider. Spotted in early July 2021, it has only ever been recorded in a small part of Dorset.



All these photos were taken last Summer.

Our thanks to Terry Crow from The Friends of Wildern Local Nature Reserve for the report and photographs. Any budding wildlife photographers who want to join them in a search for biodiversity in all its glory or are interested in seeing their photographs can find them on Facebook: @Friends Of Wildern Local Nature Reserve or Twitter: @WildernFriend.

SUNDAY RUN DAY

Parkrun - free, weekly, community events all around the world.

TRADITIONALLY, it may be a day of rest, but not for increasing numbers of youngsters who spend their Sunday mornings out running in Hedge End.

As many as 70 to 80 children regularly take part in the Dowds Farm Junior Parkrun at 9am on Sundays. It's a 2km circuit and free to anyone from the age of 4 up to fourteen.

"It doesn't matter if they walk it, run it, skip, jump or commando crawl it – it's about getting out and having fun!" said Event Director Natasha Cowan. "It's such a positive activity. There are so many smiles on faces."

Parkrun was founded in 2004 and there are now Parkrun events for children and adults on weekends in 20 countries all around the world. All events are organised by local volunteers, known as hi-vis heroes.

Children can take part on their own or with parents and carers and they don't need to commit to running every week. They need to register to take part and their finishing time is recorded so they can see how they did.



There is always a 'Tail Walker' who follows at the back, so no-one ever comes last. If children are new to the event, or very young or have disabilities, they can complete part of the course until they build up to the full 2km, although their time won't be recorded.

“It's a run ... not a race”

"We say it's a run, not a race. It's about the feel good factor, perhaps beating your previous time or just feeling great and setting yourself up for the day." said Natasha.

The Dowds Farm Parkrun has just celebrated its second birthday. The idea for holding a children's run came from Hedge End runner Beth Ingason, who sadly died a few months before it launched. The first event was held in March 2020, two weeks before lockdown, but it has since been building steadily with theme days and fancy dress. Some children are well on their way to earning an Ultra Wristband - having completed 50 runs.

Natasha said "If anyone is thinking about coming along, either to take part or to volunteer, I would encourage them to do it. It has such a wonderful community feel and is a really fantastic way to start your Sunday."

For more information please email dowdsfarm-juniors@parkrun.com or see the Dowds Farm Junior Parkrun website www.parkrun.org.uk/dowdsfarm-juniors/ or Facebook @dowdsfarmjuniorparkrun



SHOWTIME

The Berry Theatre has a full schedule over the Summer. Highlights include:

Forever Queen - a sing-a-long fit for Her Majesty with Forever Queen's tribute to the music of Freddie Mercury. (2nd June)

Ode to Joyce - Bringing to life extraordinary entertainer Joyce Grenfell with well-known songs and monologues. (17th June)

Divas Got Talent: Showcase 2022 - An exciting talent show with a twist. (10th July)



www.theberrytheatre.co.uk

Yoga for All

How people with limited movement can still enjoy the life-changing benefits of yoga.

LAURA GREEN has been practising yoga for 20 years and teaching for the last 12. She noticed that her classes were often made up of roughly the same demographic – the young and fit. She felt that she wasn't supporting the wider community so began adding Chair Yoga classes, where clients could enjoy the benefits whilst seated.



"It's a massive misconception that yoga is an exercise where you need to be flexible and strong. It's a spiritual practice going back five thousand years." said Laura.

"Chair Yoga has fantastic benefits, and it is accessible for people who have limited movement, whether that's through age, arthritis, injury, because they need to use a wheelchair or any other reason."

"We see how it makes people feel more confident, improves breathing, balance and even better dexterity in hands – great for opening jars and tying up shoelaces."

Chair Yoga classes are much more relaxed, often starting with a chat before moving on to mindful breathing and movement. Laura says she sees people arrive busy and stressed but leave calm and relaxed.

Alongside her usual, more conventional, Hatha Yoga classes in Hedge End and the surrounding area, Laura offers Chair Yoga classes in Romsey and on YouTube online. She published a book 'Teaching Chair Yoga' in April to encourage and support other yoga teachers to offer seated sessions. Classes are now starting in Chandlers Ford and Lyminster and she's hopeful one will open in Hedge End soon.

"So many people are missing out due to the lack of accessible classes. Let's hope we can change that." said Laura.

For more information contact Laura on 07866 459208 or email laura@lauragreenyoga.co.uk or Facebook @Laura Green Yoga

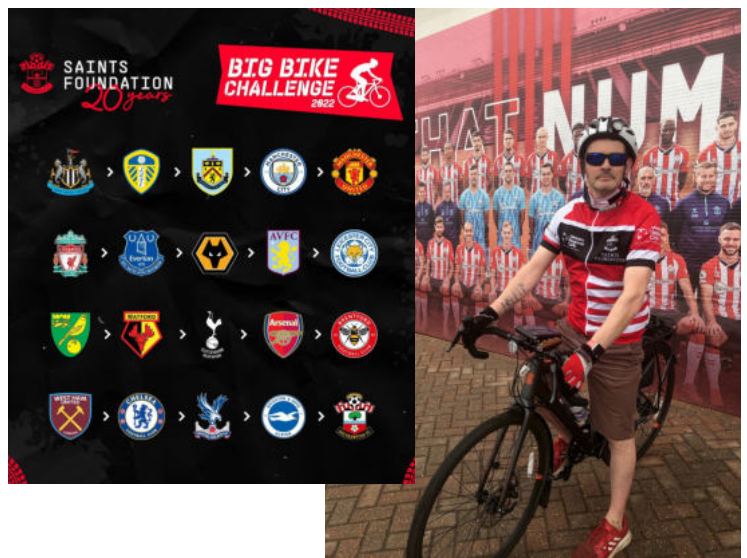
Matt's Big Challenge

LORRY DRIVER Matt Headland from Hedge End is downsizing to two wheels to take part in the gruelling Saints Foundation Big Bike Challenge in June.

The life-long Southampton FC supporter is aiming to cycle 840 miles to 20 Premier League stadiums in just nine days. It's to raise money for the Saints Foundation as it marks its 20th anniversary. The charity helps people of all ages and abilities by supporting them to live a more involved and healthier life.

Matt said: "It will be a big challenge but it is such a fantastic charity which does so much good work for the community. I try to be as healthy as I can and I'm really looking forward to it."

The 42 year old father of six will start the arduous ride in Newcastle on Saturday 4th June with the planned finish at St Mary's Stadium on Sunday 12th June.



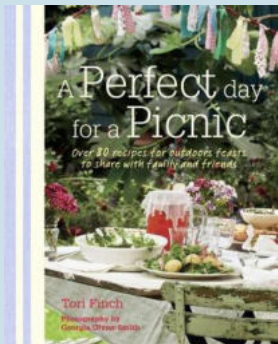
You can follow Matt's ride on his Facebook, where he'll be blogging every day: *Facebook@Matt's saints foundation big ride 2022-20 premier league stadium challenge.*

If you'd like to support Matt on his fundraising journey, he has set up a Just Giving page. (See QR Code)



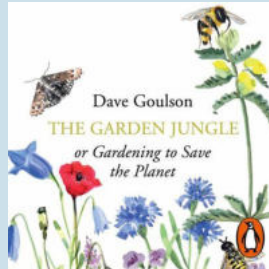


Summer Reading Ideas from Hedge End Library



Perfect Day for a Picnic by Tori Finch

Make a fabulous spread for our *Platinum Picnic in the Park* with over 80 recipes for outdoor feasts.



The Garden Jungle or Gardening to Save the Planet Audiobook by Dave Goulson

This much talked about Sunday Times bestseller introduces us to the hundreds of small creatures with whom we live cheek-by-jowl and how we can encourage them to thrive.



A Poem for Every Summer Day by Allie Esiri

Enjoy these familiar favourites and new discoveries tailored to Summer days.



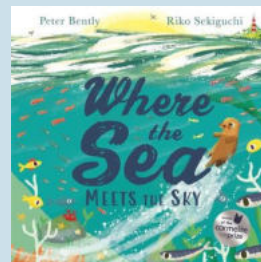
The Best Things in Life are Free by Lonely Planet

Now that travel is a possibility again, this guide is for thrifty travellers who want to find the best value for their next trip.



The Secret Life of Bees by Sue Monk Kidd

The bestselling novel about a young girl's poignant, uplifting and unforgettable journey.



Where the Sea Meets the Sky by Peter Bently

A beautiful rhyming underwater adventure for the under-fives.

SUMMER READING CHALLENGE - TAKE PART OR HELP OUT.



Join the Gadgeteers for this year's Summer Reading Challenge at Hedge End Library and discover the amazing science and innovation behind the world around us.

The challenge, aimed at children aged four to 11 years, is to read six or more library books over the Summer. There are stickers and other rewards for every book read and children who complete the mission receive a medal and a certificate. Children can also take part online with digital rewards.

Libraries are teaming up with the Science Museum Group for the challenge, brought to life by top children's writer and illustrator Julian Beresford. More details to be announced but it takes place during the Summer school holidays up until the middle of September.

Hedge End Library are looking for volunteers aged 14 and above to help with the Summer Reading Challenge. It's an enjoyable and rewarding way to help encourage younger children to read. Pop into the library for more details or see www.hants.gov.uk/jobs/volunteering/volunteeringopportunities/summerreadingchallenge



As we move into Summer, our What's On guide is looking busy, although some clubs only operate during the school term. Please use the contact details below to make sure each club is running and can accept new members.



ARTS & CRAFTS

Arts & Craft Club

Demos & outings
Tuesdays 1.30 - 3.30pm
Hedge End Village Hall
Call Joan 01489 798233

Flower Club

Demos & workshops
First Tues monthly, 7pm
2000 Centre
Call Sarah 07899 717755

Calligraphy

Beginners welcome
Wednesdays 1.15 - 3.15pm
2000 Centre
Email mary.noble@btinternet.com



SPORT & EXERCISE

Dragon Choi Kwang Do

Thursdays 7pm
2000 Centre
Call Martyn 07926 564884

Lauren Gray Yoga

Mondays 6.30pm
2000 Centre
Call Lauren 07495 446379

Hatha Yoga

Tuesdays 7pm
Turnpike Pavillion
Call Lisa 02380 648751

Hatha Yoga

Mon/Weds evenings
Turnpike Pavillion
Call Laura 07866 459208

Pilates - Move With Mollie

Mondays 6.30pm
Weds 7pm and 8.15pm
Fridays 4.30pm
Various Locations. All Ability.
Facebook: @MoveWithMollie
Email: info@movewithmollie.co.uk

Pilates

Mon 10am, Fri 10am
Village Hall. All ages/abilities
Call Elaine 07967 631739

U3A Gentle Exercise

Wednesday mornings
Village Hall
Call Joan 01489 798233



COMMUNITY CLUBS

Hedge End Horticultural Society

3rd Monday monthly
2000 Centre
Call 01489 784823

Over 60s Club

New members welcome.
Mondays 1pm-3.30pm
2000 Centre
Call 01489 311333

Good Companions

Tuesdays 1-3.30pm
2000 Centre
Call David 07712 836696

Lunch Club

Thursdays.
Members only.
2000 Centre
Call Sarah 07899 717755

31st Itchen North Scout Group

Beavers/Cubs/Scouts
Norman Rodaway Pavilion
amazonseascouts.org.uk

Hedge End Rotary

Meet Tuesdays at Botley Park Hotel, Winchester Rd
Call 0844 879 9034



MUSIC & DANCE

Glee Club

Mondays 7.15 - 8.45pm
Singers all ages & abilities
Drummond Centre
Call 07810 127351

Sally Johnson Dance Academy

Ballet, Tap, Modern
Saturdays 9am - 12pm
Drummond Centre
Call 02380 255415

Performing Arts

Company Youth Drama (ages 14-30)
Sundays
Old School House
Call Barbara 01489 690140

West End Singers - Mixed Voice Choir

Wednesdays 7.45pm
2000 Centre
www.westendsingers.co.uk
Call 02380 404881

Zumba Kids with Janine

Saturdays
9.15am: 4-7 year olds
10.05am: 7-11 year olds
Norman Rodaway Pavilion
Call Janine 07808 843779

Zumbini with Janine

Mondays 10am
Under 4s with parents/carers
2000 Centre
Call Janine 07808 843779

Junior Park Run

Sundays 9am
Dowds Farm
Free but must register in advance.
www.parkrun.org.uk/dowds-farm-juniors/

Zumba with Kay

Mon/Weds mornings
Tues/Thurs evenings
Various locations.
Adults/children.
Call Kay 07585 577598.
Facebook: @ZumbaFitnessWithKay

Seniors Table Tennis

Thursdays 2.30 - 5pm
2000 Centre
Call Penny 01489 788237

Southern Knights Kickboxing

Sat 10am Children/Adults
2000 Centre
Weds 7.30pm - 9pm
Over 16s/Adults,
Drummond Centre
Call David 07768 647328

Hedge End Junior Youth Club

Fridays, The Hub at Wildern
Places limited, call to book
01489 780440

Girlguiding Itchen Valley

Rainbows / Brownies:
2000 Centre
Guides:
Norman Rodaway Pavilion
www.girlguiding.org.uk

Women's Institute

4th Tues monthly, 6.30pm
2000 Centre
Call Jill 02380 616712

If you'd like to see your club advertised in the Gazette, please contact: marketing@hedgeend-tc.gov.uk

HALLS FOR HIRE

The Town Council has 5 community buildings which provide great venues for regular groups and clubs, or for one-off private event hire.

Each hall has tables and chairs available with a variety of capacities (see below); fitted kitchens with facilities such as microwaves, cookers, water heaters (facilities vary by hall); and disability access and toilets (DDA) and car parking. All our halls are professionally maintained by our efficient and friendly team of caretakers. More information on each hall is available online at www.hedgeend-tc.gov.uk/halls-for-hire.

Current fees: Weekday: £19.81 ph / Weekend: £27.26 ph. (includes VAT).

To book: please call 01489 780440 or email us at commsofficer@hedgeend-tc.gov.uk.



2000 CENTRE

St John's Road
SO30 4AF

Capacity:
Large hall 150 seated,
Small hall 80 seated.



NORMAN RODAWAY PAVILION

Heath House Lane
SO30 2SZ

Capacity: 85 seated.



OLD SCHOOL HOUSE

St John's Road, SO30 4AF

Capacity:
Large hall 80 seated.
Middle hall 50 seated.
Small hall 48 seated.



DRUMMOND CENTRE

Drummond Rd
SO30 2AD

Capacity:
Large hall 100 seated,
Frank Vickers Hall 50 seated.



TURNPIKE PAVILION

Turnpike Way
SO30 4QR

Capacity 48 seated.





AMENITIES

The Berry Theatre, Wildern Lane	www.theberrytheatre.co.uk	02380 652333
The Community Hub (Youth Centre), Wildern Lane		01489 780440
Citizens Advice Bureau (Drop-In), United Reform Church, 14 St John's Road (Thurs 10am-12pm)		03444 111 306
The D@rt Centre (Arts), Wildern Lane	www.thedart.co.uk	01489 779471
Hedge End Good Neighbours Network	www.fb.com/hedgeendgoodneighbours	0333 044 8842
Hedge End Household Waste Recycling Centre, Shamblehurst Lane		01489 795499
Hedge End Library, 11 Upper Northam Rd		0300 555 1387
Hedge End Post Office, St Johns Centre, Upper Northam Rd		01489 782066
Jobcentre Plus, 100 Southampton Road, SO50 5PB		0800 169 0190
Skyline Gold Radio 102.5FM, St John's Rd	www.skylinegold.co.uk	01489 799000
TADIC (Teenage Drop-In), 28 Lower Northam Rd	www.teenagedrop-inhedgeend.co.uk	07879 761660
Wildern Leisure Centre, Wildern Lane	www.wildernleisurecentre.co.uk	01489 787128

HEALTH

St Luke's Surgery, St Lukes Close	01489 783422
The Medical Centre, 24-26 Lower Northam Rd	01489 785722
Hedge End Dental Surgery (NHS), Saracen House, Freegrounds Avenue	01489 790661

SCHOOLS

Berrywood Primary School, Maunsell Way	01489 780068
Freegrounds Infants School, Hobb Lane	01489 782075
Freegrounds Junior School, Hobb Lane	01489 782295
Kings Copse Primary School, Kings Copse Ave	01489 785040
Shamblehurst Primary School, Wildern Lane	01489 782342
Wellstead Primary School, Wellstead Way	01489 799351
Wildern Secondary School, Wildern Lane	01489 783473
Deer Park School, Sika Avenue	01489 351100

PLACES OF WORSHIP

Hedge End Baptist Church, 72A Upper Northam Rd	01489 786260
Hedge End Methodist Church, 42 St John's Rd	01489 787404
Hedge End United Reformed Church, St John's Rd	01489 787408
Kings Community Church, Upper Northam Close	01489 784333
Our Lady of the Assumption Catholic Church, 3 Freegrounds Rd	023 8044 9088
St John's The Evangelist Church (C of E), St John's Rd	01489 790048
St Luke's Church, St Luke's Close	01489 781448
The Salvation Army Community Church, Wellstead Way	01489 798681

OTHER HALLS FOR HIRE

Hedge End Village Hall, St John's Rd	01489 784962
Methodist Church Hall, St John's Rd	01489 784823
Underhill Centre, St John's Rd	01489 790048
United Reformed Church Hall, St John's Rd	01489 787408

CONTACTS AND COMMITTEES



Hedge End Town Council
2000 Centre
St John's Road
Hedge End
SO30 4AF



Town Clerk: townclerk@hedgeend-tc.gov.uk
General: commsofficer@hedgeend-tc.gov.uk
Gazette: marketing@hedgeend-tc.gov.uk



01489 780440



Office hours:
Mon - Thurs **8.30am - 5pm**
Fridays **8.30am - 4.30pm**
Weekends & Bank Holidays: **Closed**

COUNCIL COMMITTEE MEETINGS

All committee meetings are held at the Town Council Office.

All meetings are formal, yet friendly and members of the public are encouraged to attend.

All meetings begin at 7pm, except Highways & Planning on the third Wednesday, which starts at 6.45pm ahead of Full Council which starts at 7.30pm.

COMMITTEE	JUN	JULY	AUG	SEPT
Policy & Resources First Tuesday monthly	7th	5th	N/M*	6th
Recreation & Amenities Second Weds monthly	8th	13th	N/M*	14th
Highways & Planning First & Third Weds** monthly	1st, 15th	6th, 20th	N/M*	7th, 21st
Full Council Third Weds monthly	15th	20th	N/M*	21st

*There are no Town Council meetings in August.

The Highways and Planning Committee meeting held on the third Wednesday will determine planning applications **only.

KEEP UP TO DATE

with the latest council and community news via our social media channels:



[/HedgeEndTC](https://www.facebook.com/HedgeEndTC)



[@HedgeEndTown](https://twitter.com/HedgeEndTown)



[/HedgeEndTownCouncil](https://www.linkedin.com/company/HedgeEndTownCouncil)



www.hedgeend-tc.gov.uk