

GAZETTE

FREE



100 years

OF HEDGE END CARNIVAL

Photo taken at the Carnival in 2013

HEDGE END TOWN COUNCILLORS



Wildern

Margaret Allingham
01489 798646



St Johns

Sheila Baynes
01489 690126



Berrywood

George Brown
07841 685044



St Helens

Chair: H & P*
Paul Carnell
01489 785216



Berrywood

Ian Corben
07561 343858



Freegrounds

Helen Corben
01489 692406



Dodwell

Tonia Craig
02380 404680



St Helens

Cynthia Garton
01489 797213



Freegrounds

Chair: Personnel & Strategy Committee
Keith House
07768 357918



Wildern

Patricia Jenkins
01489 786265



Wildern

Chair of Council
John Jupe
01489 780293



Shamblehurst

Lucy Jurd
07730 072606



Station

David Kinloch
07875 232557



Berrywood

Rupert Kyrle
02380 407045



Station

James Mitchell
0800 316 3435



Wellstead

Vice Chair of Council
Cliff Morris
07848 946822



Shamblehurst

Ron Nichols
07981 852901



Station

Chair: P & R*
Derek Pretty
01489 797213

P & R* = Policy & Resources Committee

R & A* = Recreation & Amenities Committee

H & P* = Highways & Planning Committee



St Helens

John Shepherd
01489 692597



Wellstead

Anne Small
07900 255518



St Johns

Ben Thomas
01489 790701



St Johns

Chair: R & A*
Jane Welsh
01489 784962

(Email: Firstname.Lastname@hedgeend-tc.gov.uk)

A Note From...The Chair

Welcome to the summer issue of the Gazette. I am pleased to introduce myself as the Chair of Council for the coming year. This is a new opportunity for me, and I am really looking forward to the role in whatever it will bring.

Firstly, I would like to give Cllr Lucy Jurd a big 'thank you' from all the councillors and council staff for being our Chair of Council since 2019.

I am sure that you are all looking forward to getting back to a more normal way of life. Let's hope that the vaccine rollout combined with sensible behaviour continues to give us high hopes and more freedom for the coming year. I would also like to recognise the work of doctors surgeries and pharmacies in our local area for their contribution to keeping us well.

Lockdown forced us to stay local and hopefully many of you found new and surprising areas in Hedge End in which to walk and explore. I know I am looking forward to family and friends getting out and meeting up again and I believe Hedge End has such a lot to offer for all of us.

We are really fortunate with our local area - we have many green spaces (some even have outdoor gym equipment for those of us who need to get fit!), a nature reserve, several children's play parks, good local shops and amenities as

well as a variety of social clubs, which are slowly opening up again.

Please continue to use our areas responsibly to help continue making Hedge End a vibrant place to live. I would like to urge people to keep our neighbourhood clean and tidy and to take their litter home or to use the bins provided and also to please not decorate our trees with plastic bags of dog poo!

The Council would like to welcome residents of Hedge End to attend the council meetings, where your ideas and suggestions would be most appreciated, and you can see how the council works. Meetings have been held online during the Pandemic but have now resumed face to face.

For information on all meetings, see the back page for details. In addition, if you should wish to speak to a councillor on any issue of concern to you, the inside front page has their phone numbers and the area that they represent.

**Cllr. John Jupe,
Chair of Council**



The Town Clerk's Desk

Summer is an exciting time for the Council as we prepare for many of our services to return. Grassroots sports has already returned and we are seeing an uptake in Bowling, Football and Cricket which you can read more about from Hedge End Junior Cricket Club later. We are optimistic for opening the Paddling Pool subject to government guidelines; please follow us on social media for the latest announcements.

Some of you may have realised that the luxury of online meetings has come to an end for us. Local Councils are governed by the Local Government Act 1972 and at the start of the pandemic emergency legislation was implemented to enable us to meet remotely. This expired on the 7 May and despite a High Court challenge by the governing body it was ruled against the extension of the right to hold council meetings remotely. This means most of our meetings returned in person from the 11 May, which was the first Highways & Planning meeting to be held in person since March last year.

We are all looking forward to getting back to some semblance of normality. Meetings are the initial step in this as we welcome councillors back to the office for the first time in over a year albeit still with some restrictions.

Unfortunately, during this last year and still ongoing, we have been blighted by the amount of vandalism we are experiencing. This has placed increasing pressures on an already tight budget. The Cricket Nets were only replaced on 22 April and already have been set fire to. There have also been incidents of vandalism to Turnpike roof and the Bowling Club roof with roof tiles being removed and smashed on the ground, as well as some more minor incidents all of this has to be funded by the local taxpayers.

During my last two years at the Council we have been working hard to raise standards and decrease costs. We were making progress on both counts: our open spaces are being managed more efficiently, our cleaning schedules have increased in the buildings and maintenance has improved. We still have a long way to go with improvements in some areas and as soon as funding becomes available we will manage these by priority.

Sarah Jelley, Town Clerk



Recreation & Amenities Committee

Looking after our green spaces and outdoor facilities

Summer is here but we are still waiting for the sunshine to stay with us for a few months more. It is now two years since the Paddling Pool was alive with youngsters enjoying themselves so hopefully they will be able to return soon when our weather improves.

This year the Carnival is holding its 100 year event which is on July 3rd. Nick, the Chairman has been busy organising the day so please come along and support it.

The Council's Operations Manager and I visited the Allotments for the quarterly inspection. As we have about 40 residents waiting patiently for an allotment, we had to be strict with



holders who had not cultivated their plot this year. As I have mentioned before, if you are unable for any reason to keep it up to date, please advise the Council and they can re-let it to another resident.

Since early Spring of last year you may have noticed there has been quite a few areas of grass been left uncut in corners of our parks and meadows.

By next year, the aim is that parts of our Nature Reserve, Dowds Farm Park, Cemetery, Bridget Mary Gardens and other parcels of land will see more wild flowers growing within Hedge End.

Once again we have been approached by Eastleigh Borough Council to run Park Sports for our youth in Hedge End. These will take place both in Greta Park and Woodhouse Lane, the latter being held in August for the Skate Jam. This event is really well organised and having visited previous years' events myself it is a pleasure to see our young people taking part.

The Bowling Green is now open again and if you fancy a casual game of Bowls, all equipment is available to hire from the Council Offices.

It has been a very different and difficult year this year for us all, but we can only hope we do not have any more lockdowns in the coming months. If you have plans for any holidays, remember to be careful and keep safe.

Cllr. Jane Welsh,
Chair, Recreation & Amenities Committee

Policy & Resources Committee

Looking after our income and expenditure

We have been really excited to be able to allow use of our community buildings and our staff are pleased to welcome both old and new clients to our facilities. There will I suspect be some members of the public who may be unsure about going out again, but we will take every precaution that will need to be observed to minimise any potential risk and to reassure our visitors.

I am sure that the opportunity to socialise again will be a great benefit to many people who for so long have been isolated.

In particular we are looking forward to welcoming the return of some of the popular social clubs such as the Lunch Club, the Hedge End Over 60 Club and Freegrounds Coffee Group. We recognise the valuable contribution these groups bring to the community in preventing social isolation.

Besides looking forward to re-opening our buildings we also have the regular tasks that need to be carried out.

At this moment we are preparing our accounts for approval. They have been drafted and are with our accountant for internal audit to ensure all is correctly recorded.

The past year has been challenging due to the lack of income from hall and sports hire but with support from Eastleigh Borough Council and careful control of expenditure our financial position is satisfactory and we look forward to a better year.



Cllr. Derek Pretty
Chair, Policy & Resources Committee

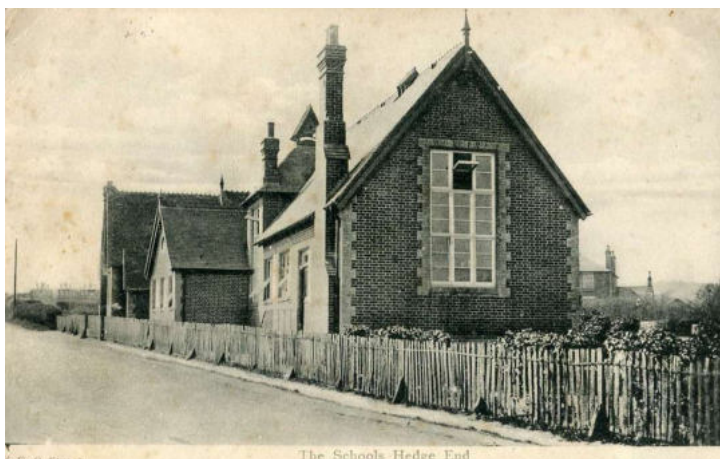
READY TO MAKE *Special Memories*

Are you looking for a venue in Hedge End for your next event? Whether you are holding a wedding reception, significant birthday, anniversary, wake, christening or naming ceremony, Hedge End Town Council offers a wide range of venues available to hire by the hour or day, seven days a week.

Old School House, as its name suggests, is a building with great history in Hedge End. It was once indeed a school, namely St John's School. It opened its doors and took on its first 13 pupils back in 1864, expanding often to accommodate the growing population. You can still see the foundation stone that was laid in 1863, which bears the inscription "Feed my lambs".

When Wildern Secondary School opened in 1963, Shamblehurst became the new junior school and many pupils moved to that building, leaving just the infants in St John's School. As Kings Copse Primary and the Freegrounds Schools also opened, the last pupils left the building in 1984.

Just over 150 years on, the Old School House is now a stylish, recently refurbished and centrally located venue, available for groups and private hire, with a large hall seating 80, a medium hall seating 50 and a small hall seating 45. It comes with a fully equipped kitchen too for all your catering needs.



▲ The original building.

Hedge End Town Council manages five community buildings throughout the local area, all of which are available for hire, offering 9 well-maintained halls of varying sizes. The recently refurbished Old School House, at the junction of St John's Road and Bursledon Road, is one such building offering a great venue for your next important event.



▲ Old School house on the junction.



▲ Building exterior.



▲ Large hall showing wooden beams.



◀ Small hall.



▲ Medium hall with seating.

◀ Fully equipped kitchen.

You can find out about all of our halls for hire on page 14. Further information, images and virtual tours can be found online at hedgeend-tc.gov.uk.

To book, you can call us on 01489 780440 or email commsofficer@hedgeend-tc.gov.uk.

PARK SPORT IN HEDGE END



Park Sport will be bringing activity back to Hedge End this summer with a range of opportunities for young people aged 5-16 being held in Greta Park and Woodhouse Lane, to name just a couple.

Noteable features include the return of the very popular Skate Jam and Free Swimming offer at Wildern Leisure Centre. Local sports clubs will be offering “have a go” sessions for 5 weeks starting week beginning 26th July.

More details will be released nearer the time when we know more about the easing of COVID restrictions. In the meantime, you can stay up to date with Park Sport news by visiting: www.eastleigh.gov.uk/parksport

SHOP LOCAL AT THE VILLAGE MARKET

The Village Market has returned on Wednesdays to Hedge End Village Centre, operating weekly between 10am and 3pm. With a variety of crafts, flowers, food stalls and more why not pop down and support local trade. The market is located on the corner of Upper Northam Rd and Wildern Lane. If you would like a stall, Eastleigh Borough Council are welcoming applications. For more information please email economicdevelopment@eastleigh.gov.uk.



FRIDAY NIGHT PROJECT GETS ARTY

Friday Night Project is a youth club for young people with additional needs run by Hedge End Town Council. They recently took part in a creative workshop with The Point in Eastleigh and local illustrator Amy Harwood as part of the The Point's 'Our Place' project.

'Our Place' is an exciting new community project which explores the place of young people in the world at the current time, and shows Eastleigh Borough through their eyes via creative videos and art installations.

As part of this project, members of Friday Night Project took part in a workshop where they drew pictures and gathered thoughts about what being part of the group means. Amy then translated these into beautiful text and illustrations which she painted onto the doors of the Community Hub at Wildern School where the group usually meets, and will remain until the Summer holidays.

A creative video of this process, as well as an interactive map detailing all the other art installations in the area for the project, will be available to view online at: www.thepointeastleigh.co.uk/join/our-place. You can also scan the QR code on posters that have been placed around the borough using your smartphone, to give you more information about the project.

The positivity, support and fun that members of the Friday Night Project experience has been really well captured and it's great to see their views captured as part of this community project.

Sarah Schlesinger,
Youth Team Leader



Join our

JUNIOR YOUTH CLUB

For Year 5 & 6 children living in Hedge End

Crafts, Games, Cooking, Sports, Trips ...and lots more.
Come and have fun with friends!

COUNCIL NEWS



STARTING JULY

Weekly every Friday 4.30 - 6pm



The Community Hub
(by Wildern School)



£2.50 subs



Spaces limited, booking required. Please contact Sarah, our Youth Team Leader, to join: sarah.schlesinger@hedgeend-tc.gov.uk

COMMUNITY



LUNCH CLUB VOLUNTEERS NEEDED

Do you enjoy preparing and cooking food and spending time with people? If so Hedge End Retired Peoples Lunch Club are looking for volunteers to help with the Thursday Lunch Club once it starts back up in August. They are looking to create a couple of extra teams of volunteers to cook and help on a weekly rota. For further details please contact Sarah on 07899 717755.



Activity opportunities for people with additional needs



- Canoeing, kayaking, motorboat trips on the River Hamble
- Bushcraft and orienteering in the River Hamble Country Park
- Climbing, archery, rifle shooting, skittles and indoor games
- Recreational tree climbing, problem solving and zipwire
- Day Services including music therapy, arts and crafts, yoga and other sensory activities; gardening, woodwork, cooking, baking

QE2 Activity Centre
River Hamble Country Park
Hedge End
Hampshire
SO31 1BH

Tel: 023 8040 4844
Email: office@qe2activitycentre.co.uk
Website: www.qe2activitycentre.co.uk
Registered Charity: CIO 1165893



Arts and Crafts



Multi-Sports



Cookery



Summer

2021

Monday to Friday
26th July to 27th August

Mix and match your activities or choose your favourite!

£25 for a full day:
8:30am-5pm

£15 for a half day:
8:30am-12:30pm
1pm-5pm

*Additional £5 for arts resource pack

Book now! www.thedart.co.uk 01489 779 471
the d.@rt centre and Wildern Leisure Centre, Wildern Lane,
Hedge End, SO30 4EJ



Summer IN THE GARDEN

With Summer with us again and the growing season well underway, Peter Ayliffe of Hedge End Horticultural Society shares ideas of what to do and grow in the garden.

JULY

Flowers: Plant autumn bulbs including nerines, colchicums and sternbergia. Cut back early summer perennials such as hardy geraniums and delphiniums after flowering, to get a second flush. Feed and deadhead roses to keep them flowering strongly. Sow biennials such as foxgloves, honesty, forget-me-nots and wallflowers for blooms next year.

Vegetables: Pick courgettes before they become marrows. Sow radishes, lettuce and other salad leaves. July is the last month to sow carrot seeds and French beans. Runner beans sown earlier should start cropping this month. Sow maincrop turnips.

AUGUST

Flowers: Prune rambling roses, remove up to a third of stems that have flowered and tie the others to supports. Trim lavender once flowering is over to maintain a compact bushy shape but avoid cutting into dead wood. Sow hardy annuals such as calendulas and cornflowers for a good show of colour next spring.

Vegetables: Continue to feed tomato plants and remove lower leaves to help air circulation and prevent disease. Pinch out tops to concentrate growth into fruit already formed. Aim to leave 5 or 6 trusses of fruit per plant.

SEPTEMBER

Flowers: Plant spring flowering bulbs now, such as daffodils, crocus and hyacinth for glorious colour next year.

Vegetables: This is harvest time. Tomatoes should ripen now if they haven't already. Harvest onions when the leaves turn yellow and stems bend over. Main crop potatoes are ready from late August to October. Wait for foliage to turn yellow, cut it off, and leave for a week or two before digging up.

LET THE CRICKET BEGIN!

If you are looking for an outdoor activity this summer for children and young people between the ages of 6 and 18, look no further than Hedge End Junior Cricket Club (HEJCC). Our younger age groups play with rubber cricket balls to ensure a fun, and safe, introduction to the sport.

Even in 2020, the year of coronavirus, HEJCC managed to play over thirty fixtures against other local clubs ensuring everyone stayed safe, but still enjoying fun (and competitive) outdoor activity.

Although there was a distinct lack of cake between innings (which was sorely missed), we were able to successfully adapt playing arrangements to ensure an extended season that lasted from June through to September.

The 2021 season is now upon us, and HEJCC have entered teams in the Winchester Warriors under 9, under 11, under 15 and under 17 leagues, as well as organising fun cricket-based games for 6 to 8 year olds under the England Cricket Boards "All stars" programme (this year supported directly by coaches from Hampshire).

Activities, matches and practices take place at both Turnpike Way and Botley recreational grounds with all children welcome to turn up and have a go at the sport.

Please go to www.hedgeendjunior.play-cricket.com or email secretary@hejcc.co.uk for details about the club and to find out which nights the different age groups train.

**Mark Beattie-Edwards, Secretary
Hedge End Junior Cricket Club**



CARNIVAL TO RETURN

1948

FOR CENTENARY CELEBRATION

by Nick Wise, Hedge End Carnival Committee Chair

In 1921 Hedge End was still a mainly rural community where the population was measured in 100s rather than 1000s. They could have had no concept of what Hedge End would become. They did however know how to get a carnival together and what a debt we owe them!

After the cancellation of last year's carnival due to COVID, we are determined to hold our Centenary Carnival on the correct day: Saturday 3rd July 2021, and for it to be as near to normal as possible.

This was destined to be the biggest day in Hedge End's history and despite recent problems let us try to make it that. By July, we should even be able to get together with friends and have a wonderful time, and we would like lots of people to take part in the procession. The theme is 100 years of Hedge End Carnival. It's going to be a 'Ton of Fun'!

Major acts have been booked for the Gala Show including the Vander Bros. Skywheel, the Mountain bike Aerial Display and to round off the afternoon, Abba's Angels. The funfair should be here and we hope to have a small number of stalls too.

At the time of going to press we cannot know what, if any, national restrictions will be in place, but we do know that the Hedge End Carnival will be one the local area's first public events post-COVID, so please check the carnival website for the latest information before you visit, at www.hedgeendcarnival.org.uk.

A few minor alterations have already been made. The large vehicles taking part in the procession will gather in St. John's Road, so expect St. John's Road to be closed from 11.30am. In order to create more space on Greta Park, vehicles in the procession will not enter the Park but will terminate in Upper Northam Road. This means that Upper Northam Road will remain closed for longer than usual.

To avoid queues forming there will be no charge to enter the event, however you will be able to make a donation. We look forward to seeing you there - let's make this a day to remember!



1920s



1950s



1970s



2010s

ROTARY HELPS GOOD CAUSES

by David Baynes, Hedge End Rotary

Since January 2020, just like everyone else, Hedge End Rotary had to adjust to a different way of working together and “doing Rotary”. Fortunately, we could all keep in touch through weekly meetings on Zoom and we managed to achieve much more than we had thought possible when we entered the first lockdown.

On the social side we took part in online quizzes with our own members and other Rotary clubs. We had two joint meetings with our French sister club in Nantes and a link up with a club on the Australian Gold Coast. We have also been pleased to welcome David Small and Gloria Osmond as new members of our club and both have already been very active.

Members continued to raise funds to support worthy causes. Of course, we also needed to make sure that Hedge End Rotary also had the resources to carry on our work supporting the community. To that end, we are grateful to Tesco, Bursledon for allowing us to collect outside their store. Customers were very generous as usual, and this has contributed to enabling us to continue with our work in 2021.



One of the first community projects we have been involved with has been to collect used laptops and tablets for use by pupils at local schools (see photo, above).

Sadly, earlier this year we received the news that our Honorary Member Len Welsh had passed away. Len was a long standing and very popular member of our club, a past president and a true Rotarian. He will be fondly remembered by us and by the many people in Hedge End who knew him.

As we plan for the year ahead we are hoping to organise a sponsored walk from Winchester to Canterbury plus as many of our regular annual events as possible. In the meantime we expect to continue meeting on Zoom and supporting local and international causes and when the situation allows, getting back together.

W.I. PLANS NEW PROGRAMME OF EVENTS

by Jill Burrows, Hedge End Women's Institute

Hedge End W.I. has been locked down for over a year but, fortunately, the knitting needles have not. Members have continued supporting Princess Anne Hospital, the Royal British Legion and Age UK using their knitting skills. The photo (right) shows some of the thousand plus Doodle hats knitted. For every hat, Innocent Drinks give Age UK. 25p.

At the time of writing, there is light at the end of the tunnel, and it is hoped that the W.I. will be able to re-open in June.

However, like other organisations, we have lost members and we are looking forward to building a new programme which will appeal to all the current members.

Our first event for members, will be on Monday 5th July when we have been asked to celebrate N.H.S. Day. Our tea and cake afternoon will be a social event- with a bit of education - so that we not only celebrate the work done by the N.H.S but also allow interaction between the ladies who have been isolated from their friends for so long.

We are also looking forward to using the Old School House for that event, one of the Council's halls for hire, which will bring back memories of taking our children to school for the first time! Where did those years go?



Wildern LOCAL NATURE RESERVE AT ITS BEST

Wildern Local Nature Reserve is at its best in the Summer and there is always a wide variety of wildlife to admire. We have highlighted a few which you should be able to find.

by George Baker, Julie Williams and Terry Crow - Friends of Wildern Nature Reserve
www.facebook.com/groups/2030431683870743



The Spotted Flycatcher: A small grey-brown bird with dark markings on its breast who likes to sit in an exposed position flicking its tail and watching for passing insects. It is a summer visitor to Hampshire, arriving in May to breed.



The Ragged Robin: A tall slender plant found damp grassland and stream sides. Its ragged looking pink flowers have five petals each divided into four lobes and are attractive to local hoverflies. Leaves are narrow and spoon shaped.



Black-tailed Skimmer (dragonfly): The female is shown here with a yellow and dark ladder pattern, the male's being blue, darkening to the rear. Their season is mainly from May to August. A locally common species, we may see a handful each year.



Purple Hairstreak Butterfly: Of the 46 species of butterfly found in Hampshire, this is among the scarcer. We see good numbers as we have many Oak Trees, the caterpillars' only foodplant, aided by the fact we are a series of wetlands, from which they drink in dry periods. They peak in July.

Join the Hedge End Town Council's Conservation Volunteers

While it's important to leave nature to develop naturally, there are a few activities that need to be carried out to protect and enhance the native habitat for the wellbeing of the local biodiversity.

Hedge End Town Council's Conservation Volunteers meet once a month and carry out a wide range of activities including planting, coppicing, scrub clearance, litter picking and many other tasks. Sessions will begin again in June so if you fancy getting involved please contact Hedge End Town Council.

Please note that participation is by prior registration only and you will not be able to join in the activities if you turn up on the day without having first registered.



▲ Conservation volunteers at Wildern LNR.



THE STORY OF **Botleigh Grange**

With thanks to Stephen Tanti, local historian and owner of the Book Shop above Hedge End Post Office, for his kind permission to use text from his book "Hedge End: From Village to Town" (published in 2009) for the following article, with additions.

Botleigh Grange is a large, grand building situated on Grange Road in Hedge End. It was built in the early 17th century, becoming the most imposing building in the area and even enjoyed a visit from Oliver Cromwell. Much of the estate consisted of agricultural land that reached as far as Boorley Green and Broad Oak towards Botley.

Among the farms which belonged to Botleigh Grange were Shamlehurst Farm, Durley Brook Farm and Home Farm. It is recorded that in the 1840s the Grange was owned by John Beste.

Mr Thomas Hellyer Foord, a wealthy shipbuilder from Rochester, Kent (and whose name is given to roads in Hedge End) purchased the 100 Acre estate in 1868. He made several alterations to the house, including a clock tower. New internal decorations also included panelled walls and an ornate ceiling with acorn carvings, which reminded him of Acorn Wharf in Rochester where he ran the family business and acquired his wealth.

Mr Foord was known to be a bit eccentric, bathing only in seawater and eating only two meals a day. He was a keen collector of fine art and loved wildlife, introducing a herd of 200 deer that roamed the park. Local children were paid to collect acorns in the autumn to help feed the herd.



He was also generous to the folks of Hedge End, often making gifts of food and coal, and he opened up the grounds for children on special occasions. He also paid the wages and provided a house for Nurse Gammon who was the first local midwife for the village.

Botleigh Grange was leased out during World War 1 to the Americans coming into Southampton Docks, and was used as a base camp and minor injuries unit.



Mr Foord died aged 93 in 1917 and is remembered in St John's Church with a stained glass window. After Mr Foord's death, the Grange and its estate were sold off at auction and in 1923 acquired by Mr Millett. The house itself was neglected and derelict by the 1920s. However, in 1932 the house was saved from an uncertain future by a Mrs Beazeley who converted it into a private hotel.

Since then it continued to function as a hotel and spa before sadly falling into administration and closing in 2019.

However, it was bought in 2020 and is now under the management of Excelsior Hotels. Extensive surveying and refurbishment works are now being undertaken with the aim that the Grange will hopefully become an exclusive 'destination location' in Hedge End in the near future.



As the government's COVID restrictions continue to ease, clubs and activities across Hedge End are slowly starting to return, and so is our What's On guide! Please use the contact details below to make sure each club is running and can accept new members, Restrictions may change after this guide has been printed.



ARTS & CRAFTS

Arts & Craft Club

Demos & outings
Tuesdays 1.30 - 3.30pm
Hedge End Village Hall
Call Joan 01489 798233

Flower Club

Demos & workshops
Returning August
2000 Centre
Call Caroline 01489 783115

Calligraphy

Beginners welcome
Wednesdays 1.15 - 3.15pm
2000 Centre
Email mary.noble@btinternet.com



MUSIC & DANCE

Glee Club

Mondays 7.15 - 8.45pm
Singers all ages & abilities
Drummond Centre
Call 07810 127351

Performing Arts Company

Youth Drama (ages 14-30)
Sundays & Mondays
Old School House
Call Barbara 01489 690140

Sally Johnson Dance Academy

Ballet, Tap, Modern
Saturdays 9am - 12pm
Drummond Centre
Call 02380 255415

West End Singers - Mixed Voice Choir

Wednesdays 7.30pm
2000 Centre
www.westendsingers.co.uk
02380 404881



SPORT & EXERCISE

Dragon Choi Kwang Do

Thursdays 7pm
2000 Centre
Call Martyn 07926 564884

Southern Knights Kickboxing

Sat 9am, Weds 7.30pm
2000 Centre
Call David 07768 647328

Seniors Table Tennis

Thursdays 2 - 4pm
2000 Centre
Call Penny 01489 788237

Paula's Zumba / Fitsteps

Thurs 6.30pm / 7.30pm
2000 Centre
Call Paula 07731 320440

LG Yoga

Mondays 6.30pm
2000 Centre
Call Lauren 07495 446379

Pilates

Mon 10am, Fri 11am
Village Hall. All ages/abilities
Call Elaine 07967 631739

U3A Gentle Exercise

Returning after 23rd June
Village Hall
Call Joan 01489 798233

Zuko Sports Kids' Football

Fridays 10 - 11am
2000 Centre
Call Joe 07546 495587

Zumba Kids

Saturdays 10am
Norman Rodaway Pavilion
Call Janine 07808 843779



COMMUNITY CLUBS

Hedge End

Horticultural Society
Meet 3rd Monday monthly
2000 Centre
Call 01489 784823

Ladies Lodge

Returning September
2000 Centre
Call 02380 367573

31st Itchen North Scout Group

Beavers/Cubs/Scouts
Norman Rodaway Pavilion
amazonseascouts.org.uk

2nd Hedge End Brownies

Thursdays 6pm
Drummond Centre
www.girlguiding.org.uk
Call 0800 169 5901

Hedge End Rotary

Meet Tuesdays at Botley Park Hotel, Winchester Rd
Call 0844 879 9034

Lunch Club

Returning August
Members only
2000 Centre
Call Sarah 01489 798816

Itchen Valley Girl Guides

Rainbows / Brownies:
2000 Centre Large & small halls
Wednesdays 6pm / 5.30pm

Over 60s Club

New members welcome.
Returning Sept, Mon 1pm
2000 Centre
Call 07818 802241

Women's Institute

4th Tues monthly
2000 Centre
Call Jill 01489 782121

Guides:

Norman Rodaway Pavilion
Tuesdays 7.30pm
www.girlguiding.org.uk
Call 0800 169 5901

HALLS FOR HIRE

The Town Council has 5 community buildings which provide great venues for regular groups and clubs, or for one-off private event hire. We look forward to welcoming private hire back from 21st June 2021, subject to any further government restrictions.

Each hall has tables and chairs available with a variety of capacities (see below); fitted kitchens with facilities such as microwaves, cookers, water heaters (facilities vary by hall); and disability access and toilets (DDA) and car parking. All our halls are professionally maintained by our efficient and friendly team of caretakers.

More information on each hall is available online at www.hedgeend-tc.gov.uk/halls-for-hire.

Current fees: Weekday: £18.88 ph / Weekend: £25.98 ph.

To book: please call 01489 780440 or email us at commsofficer@hedgeend-tc.gov.uk.



2000 CENTRE

St John's Road,
SO30 4AF

Capacity:
Large hall 150 seated,
small hall 80 seated.



NORMAN RODAWAY PAVILION

Heath House Lane, SO30 2SZ

Capacity: 85 seated.
Outdoor enclosed children's
play area.



OLD SCHOOL HOUSE

St John's Road, SO30 4AF

Capacity:
Large hall 80 seated.
Middle hall 50 seated.
Small hall 48 seated.



DRUMMOND CENTRE

Drummond Rd, SO30 2AD

Capacity:
Large hall 100 seated,
Frank Vickers Hall 50 seated.

Outdoor enclosed
children's play area.



TURNPIKE PAVILION

Turnpike Way, SO30 4QR

Capacity 48 seated.
Outdoor enclosed
children's play area.





LOCAL SERVICES DIRECTORY



AMENITIES

- The Berry Theatre, Wildern Lane www.theberrytheatre.co.uk **02380 652333**
- The Community Hub (Youth Centre), Wildern Lane **01489 780440**
- Citizens Advice Bureau (Outreach), Salvation Army, 85 Whites Way **03444 111 306**
- The D@rt Centre (Arts), Wildern Lane www.thedart.co.uk **01489 779471**
- Hedge End Good Neighbours Network www.fb.com/hedgeendgoodneighbours **03330 448 842**
- Hedge End Household Waste Recycling Centre, Shamblehurst Lane **01489 795499**
- Hedge End Library, 11 Upper Northam Rd **0300 555 1387**
- Hedge End Post Office, St Johns Centre, Upper Northam Rd **01489 782066**
- Jobcentre Plus, 100 Southampton Road, SO50 5PB www.skylinegold.co.uk **0800 169 0190**
- Skyline Gold Radio 102.5FM, St John's Rd www.teenagedrop-inhedgeend.co.uk **01489 799000**
- TADIC (Teenage Drop-in, 28 Lower Northam Rd www.wildernleisurecentre.co.uk **07879 761660**
- Wildern Leisure Centre, Wildern Lane **01489 787128**

HEALTH

- St Luke's Surgery, St Lukes Close **01489 783422**
- 01489 785722**
- The Medical Centre, 24-26 Lower Northam Rd **01489 790661**

Hedge End Dental Surgery (NHS), Saracen House, Freegrounds Avenue

SCHOOLS

- Berrywood Primary School, Maunsell Way **01489 780068**
- Freegrounds Infants School, Hobb Lane **01489 782075**
- Freegrounds Junior School, Hobb Lane **01489 782295**
- Kings Copse Primary School, Kings Copse Ave **01489 785040**
- 01489 782342**
- 01489 799351**
- 01489 783473**

Shamblehurst Primary School, Wildern Lane

Wellstead Primary School, Wellstead Way

- Hedge End Baptist Church, 72A Upper Northam Rd **01489 786260**
- Wildern Secondary School, Wildern Lane **023 8073 9238**
- Hedge End Methodist Church, 42 St John's Rd **01489 787408**
- Hedge End United Reformed Church, St John's Rd **01489 784333**
- Kings Community Church, Upper Northam Close **023 8044 9088**
- 01489 790048**
- Our Lady of the Assumption Catholic Church, 3 Freegrounds Rd **01489 781448**
- 01489 798681**

St John's The Evangelist Church (C of E), St John's Rd

OTHER HALLS FOR HIRE

- St Luke's Church, St Luke's Close **01489 784962**
- Hedge End Village Hall, St John's Rd **01489 784823**
- Methodist Church Hall, St John's Rd **01489 790048**
- Underhill Centre, St John's Rd **01489 787408**
- United Reformed Church Hall, St John's Rd

CONTACTS AND COMMITTEES



Hedge End Town Council
2000 Centre
St John's Road
Hedge End
SO30 4AF



Town Clerk: townclerk@hedgeend-tc.gov.uk
General: commsofficer@hedgeend-tc.gov.uk
Gazette: marketing@hedgeend-tc.gov.uk



01489 780440



Office hours:
Mon - Thurs **8.30am - 5pm**
Fridays **8.30am - 4.30pm**
Weekends & Bank Holidays: **Closed**

COUNCIL COMMITTEE MEETINGS

All committee meetings are held at the Town Council Office.

All meetings are formal, yet friendly and members of the public are encouraged to attend.

All meetings begin at 7pm, except Highways & Planning on the third Wednesday, which starts at 6.45pm ahead of Full Council which starts at 7.30pm.

COMMITTEE

Policy & Resources First Tuesday monthly

Recreation & Amenities Second Weds monthly

Highways & Planning First & Third Weds* monthly

Full Council Third Weds monthly

JULY

6th

14th

7th, 21st

21st

SEPT

7th

8th

1st, 15th

15th

AUG

-

-

-

-

OCT

5th

13th

6th, 20th

20th

*The Highways and Planning Committee meeting held on the third Wednesday will determine planning applications **only**.

KEEP UP TO DATE

with the latest council and community news via our social media channels:



[/HedgeEndTC](https://www.facebook.com/HedgeEndTC)



[@HedgeEndTown](https://twitter.com/HedgeEndTown)



[/HedgeEndTownCouncil](https://www.linkedin.com/company/HedgeEndTownCouncil)



www.hedgeend-tc.gov.uk