

GAZETTE

FREE

SPRING EDITION 2020



Conservation at Bridget Mary Gardens

Hedge End Police Report

A Day in the Life of...A Marketing Officer

New Music Makers Celebrate 50 Years

Hedge End Rotary Update & Afternoon Tea Party

Hedge End Town Council's 125th Anniversary Celebrations

Community Halls Available For Hire

Come Along And Join Our Annual Parish Assembly

• HEDGE END TOWN COUNCILLORS •



Wildern

Margaret Allingham
01489 798646



St Johns

Sheila Baynes



Berrywood

George Brown
07841 685044



St Helens

Chair: H & P*
Paul Carnell
01489 785216



Berrywood

Ian Corben
07561 343858



Freegrounds

Helen Corben
01489 692406



Dodwell

Tonia Craig
02380 404680



St Helens

Cynthia Garton
01489 797213



Freegrounds

Chair: Personnel & Strategy Committee
Keith House
07768 357918



Wildern

Patricia Jenkins
01489 786265



Wildern

Vice Chair of Council
John Jupe
01489 780293



Shamblehurst

Chair of Council
Lucy Jurd
07730 072606



Station

David Kinloch
07875 232557



Berrywood

Rupert Kyrle
02380 407045



Station

James Mitchell
0800 316 3435



Wellstead

Cliff Morris
07848 946822



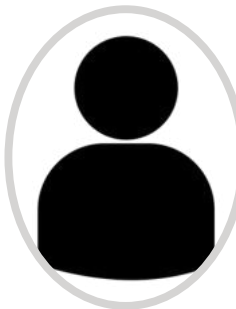
Shamblehurst

Ron Nichols
07981 852901



Station

Chair: P & R*
Derek Pretty
01489 797213



St Helens

Vacant at time of
print



Wellstead

Anne Small
07900 255518



St Johns

Ben Thomas
01489 790701



St Johns

Chair: R & A*
Jane Welsh
01489 784962

P & R* = Policy & Resources Committee

R & A* = Recreation & Amenities Committee

H & P* = Highways & Planning Committee

(Email: Firstname.Lastname@hedgeend-tc.gov.uk)

A Note From...



The Chair &

As my year in the chair draws to a close in May 2020 it's an opportunity for me to reflect on what the past year has meant to me in my role of Chair of the Council. Chair of the Council is a civic and ceremonial position which doesn't attract any allowances but presents the greatest of opportunities to see more of the local area and have a better understanding on the inner workings of the council.

Over the past year, I have chaired several full council meetings and seen an increased attendance from members of the public at these meetings. I have been invited to Annual General Meetings to represent Hedge End Town Councils local interests and learnt more about the local area. I've also been really fortunate to attend some very special events this year including the annual Remembrance Parade where I was moved that so many residents showed their respects by attending. I got to plant a tree for the councils 125th Birthday celebrations and those that have found the plaque will see a lasting reminder of my time as chair.

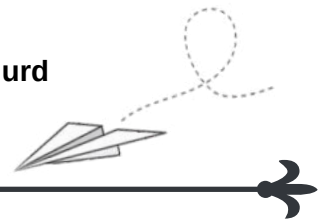
The Town Clerk's Desk

The Council saw another year of achieving the prestigious Green Flag award for the cemetery and I'd like to thank all the staff that have supported my year as Chair ensuring that the Town Council operates smoothly and efficiently.

Lastly, I would like to thank my councillor colleagues who willingly give their time for free to ensure that Hedge End residents are heard and have supported me in my year as Chair.

I continue to be chair until the AGM and will host the Annual Parish Assembly which I hope you will attend however this is my last gazette publication.

Chair of Council - Cllr. Lucy Jurd



As spring approaches and we look forward to the warmer weather there is a realisation that I have been here a full year seeing all the seasons and patterns of work that our staff undertake to ensure that Hedge End is looking as presentable as possible throughout the year.

This winter has been particularly difficult with the warm and wet weather meaning we have not been able to access some of the recreation grounds for fear of churning up the grass surfaces. Ground staff have been concentrating on cutting back overgrown vegetation, ensuring that this gives the hedges and trees the best opportunity to flourish in the summer.

The team in the office have been looking at streamlining processes and simplifying systems to ensure that residents can find what they want easier, this has included moving more information online via the website and having a better social media presence for people to engage with us differently.

There has been more of a focus on our buildings this year, with the caretaker's assistance we have concentrated on fixing some of the smaller niggles that cause annoyance to hirers.

The Old School House has undergone refurbishment which means it is now a light airy space for hire that can accommodate up to 150 people, including a fully fitted kitchen. Bookings are now being taken.

Council agreed the budget for the forthcoming year (more about this in the report on finance) and officers will work hard to ensure we are achieving best value on everything we do, driving savings from our current ways of working. Priorities this year will be to continue with the building improvements with hopes for improving the town centre toilets and the toilets in the Old School House, ensuring our green spaces and play areas are kept free of litter and provide a nice environment for all to enjoy. We will, of course, be continuing with the day to day business across our other services. If you think there are other areas that we should be looking at then please do raise them either with me or your local councillor.

Town Clerk - Sarah Jelley



COUNCIL NEWS

RECREATION & AMENITIES

Since our last publication, the weather has not been good, rather more wet than dry. However, Spring is now with us and so let's look forward to seeing the daffodils and crocuses along our grass verges around Hedge End. They always look beautiful.

Our ground staff have been kept busy over winter. It does not seem to matter what season it is; they have plenty to do managing our outdoor spaces. The cemetery, as usual, is kept up to a very high standard and this year, we hope to plant more wildflowers within the cemetery.

There is not much to report on our allotments as it has been very wet for our allotment holders. We currently have 12 people on our waiting list still requiring an allotment, so if you feel unable to attend yours any more please contact our office. It is a great outdoor hobby, and much appreciated by all.

Our Conservation team have been very busy, even during the bad weather. Well done to all who turned out and worked hard as a team, planting 160 trees at Bridget Mary Gardens.

Even Hannah from the council offices and I did our bit, and got down with our spades and joined in.

A few other points I would like to raise is that some of our litter bins are being filled with domestic waste from householders. As these are required for the purpose of passers-by with their paper bits and pieces and dog walkers for their dog waste, we would appreciate not filling them unnecessarily.

Also, our teen shelters are being sprayed with unwanted paint in some of our areas. This is such a shame as we do try to provide these teen shelters for our young people to enjoy sitting together. So, if you have any teenagers within your family just give them a slight nudge and tell them we are doing what we can for them and don't like it being made to look unpleasant. Thank you.

That is all for now, let's enjoy the year ahead and hope the weather is on our side.

Cllr. Jane Welsh- Chair- Recreation & Amenities Committee




FINANCE

Each year every Town and Parish Council is required to submit a budget precept to its District or Borough Council to cover its local expenditure for services not provided by that District or Borough Council. This precept forms part of every households council tax bill. This amount is identified on the bill itself. The council tax applicable to each household is then calculated to include the precept from the County Council, Borough Council, Police and the Fire Services.

The money that will be raised by the town precept will be used to cover all of the local facilities that the Town Council undertakes. This includes providing and maintain playing fields, football pitches, recreation grounds, play areas, allotments and cemetery, and many of the community buildings in Hedge End.

This year Hedge End Town Council will need to raise its element of council tax by 2%. This is needed because of continued increases in our costs which we can no longer absorb without reducing our services.

We have carried out a careful review of our costs and expenditure to ensure that we are achieving the best value for money. There are many worthwhile projects that need consideration as part of this process.



As part of the procedure, the Town Clerk and her staff continue to look for ways in which we can make savings on the budgeted costs.

We are also committed to reducing our carbon footprint and are looking at ways that this can be achieved. We will continue to look at ways to reduce costs and become more energy efficient.

Remember the Policy and Resources Committee meets monthly and that our meetings are open to the public and we are always pleased to welcome visitors.



Cllr. Derek Pretty - Chair- Policy & Resources Committee



Older person's

HEDGE END ROTARY

Afternoon Tea Party

FOR THE RESIDENTS OF HEDGE END
SATURDAY 5TH APRIL AT 2.30PM.

Book your free space at the Hedge End Post Office.
Add your name to the list!



Afternoon Tea taking place at 2000 Centre, St Johns Road, Hedge End, SO30 4AF

Drop in
café

Everyone
welcome!

Tea with a Twist

Starting from:

Tuesday 25 February 2020
10am - 12noon

Then every second and fourth Tuesday of
each month

Venue:

Old School House

St John's Road, Hedge End. SO30 4AF

Come along for a cup of tea/coffee,
biscuit and a friendly natter.

Board games and arts and crafts available
alongside guest speakers and activities for each
session.

For enquiries please contact

Hedge End Town Council on 01489 780440



EVERYONE WELCOME

HEDGE END ANNUAL PARISH ASSEMBLY

Join us at the 2000 Centre, Town Council
Offices, for Refreshments on Wednesday
22nd April 2020 at 7pm.

COMMITTEE & CLUB UPDATES, REPORTS,
AWARDS CEREMONY



UNICORN COUNSELLING & SUPPORT

FOR THE UNIQUE INDIVIDUAL

Wednesdays 3.30-6.30pm

The Hub, Wildern Lane, Hedge End, SO30 4EJ

For young people with mild to moderate disabilities &
additional needs ages 14 - 25yrs. One to one weekly
counselling sessions alongside a Health & Wellbeing Drop in.

For referral form/ further information please contact

Sarah Schlesinger: sarah.schlesinger@hedgeend-tc.gov.uk
(01489) 780440.



Padding Pool



Opens in May!

The date is yet to be confirmed so please keep your eyes
peeled!

The popular Hedge End paddling pool will be opening this May for children up to the
age of 12 years. Come down and have some fun splashing around in the sunshine.

COUNCIL NEWS

125TH TOWN COUNCIL ANNIVERSARY 🏆

Only yesterday did it feel like we were celebrating the 100th Anniversary, first forming as a parish in 1894 and later as a Town Council in 1992. Although this year councillors did not dress up in the late Victorian era style of clothing like on the hundredth anniversary, everyone did make a fantastic effort to celebrate the 125th milestone. We had a special guest appearance from the Mayor of Eastleigh, Cllr Darshan Mann alongside the Chair of Council, Lucy Jurd who together planted a tree to commemorate the occasion. Cllr Jane Welsh very kindly donated a beautiful cake to share amongst the guests of the event, which was greatly enjoyed alongside a nice cup of tea served by locals Pat Bree and Barbara Drew.

The display showcasing the history of Hedge End was met with smiling faces by those who looked back on the early days, with the fondest of memories. Long-serving members of local community groups gathered to show their support, hosting stands to represent their involvement in Hedge End. The display which was created for the 125th Anniversary later made its way over to the Hedge End Library where it remained until late January. We welcomed the W.I, Performing Arts Company, Flower Club and the well-known Stephen Tanti from the Hedge End book shop above the Post Office, to showcase their wares to visitors throughout the day. During the afternoon Wildern Choir sang their hearts out and brought cheer to all around the room, followed by workshops from calligraphy expert Mary Noble and the popular Arts & Crafts ladies who regularly host classes at the village hall.

To bring this event to a close, the council awarded a £10 gift voucher kindly donated Marks & Spencer to the winner of the questionnaire, which circulated throughout the day to test everyone's knowledge of Hedge End history. The winner was picked out of a hat at random, and elated to have won.



COMMUNITY HALLS

Halls for Hire

2000 CENTRE

- Tables and chairs available - Large hall capacity 150 seated / Small Hall 80 seated
- Kitchen with microwave, cooker and water heater.
- Disability access and toilets (DDA)
- Car parking available



NORMAN RODAWAY PAVILION

- Tables and chairs available for 85 seated
- Kitchen with microwave, cooker and water heater.
- Disability access and toilets (DDA)
- Car parking available
- Outdoor enclosed children's play area



DRUMMOND CENTRE

- Tables and chairs available for 100 seated
- Frank Vickers Small Hall (50 seated guests) also available
- Kitchen with microwave, cooker and water heater
- Disability access and toilet (DDA)
- Car parking available
- Outdoor enclosed children's play area



OLD SCHOOL HOUSE

- Tables and Chairs available for 80, 50 & 30 seated. (Large hall, middle hall, small hall)
- Kitchen with microwave, cooker and water heater
- Disability access and toilet (DDA)
- Car parking available



For Hire



TURNPIKE PAVILION

- Tables and chairs available for 48 seated
- Kitchen with microwave, cooker and water heater
- Disability access and toilet (DDA)
- Car parking available
- Outdoor enclosed children's play area

• Expressions of Interest are being sought from local nursery/pre-school providers looking to use Turnpike Pavilion exclusive use during the allotted time during the week. Current rates are £12.70 per hour (subject to increase April 2020). The hall is 6.7m x 9m and can accommodate 48 seated. The space includes use of the enclosed/secure paved outdoor area. If you would like an informal chat or to visit the space please contact the Town Clerk on 01489 780440.



COMMUNITY NEWS

HEDGE END COPS

Your local Police Station based in Hedge End has been closed to the public for some time which I know can be frustrating. Hedge End Neighbourhood Policing Team have been focusing on enhancing their engagement with the public online through various platforms. 'Hedge End Cops' was launched on Facebook on 23rd July 2019 and to date, we have reached 6,148 followers (..and counting!). Here we can contact thousands of people at the click of a button and provide updates, talk about our local issues and give crime prevention advice. For those of you not on Facebook, we also run our 'Hampshire Alert' option. This allows us to contact you, via email about local issues and crime that is happening in your area, along with this we provide relevant crime prevention and safeguarding advice to everybody that has signed up – 984 of you!

We are aware that not everybody wants to be on Facebook, or Hampshire Alerts so we are working on launching some new 'Community Beat Surgeries' in Hedge End for 2020 for members of the public to come along to and discuss various issues and pick up crime prevention advice. This way you can have the opportunity to speak to us face to face and meet the team! Look out on the Hedge End notice boards or at the Town Council for an up to date list of where to find us and when, coming soon!

From January until March 2020 we are going to be seeing some new officers heading our way, which is great news. Hampshire is expected to have approx. 250 new Police Officers joining, no doubt some of them will be coming to work in Hedge End.

2020 we will be continuing to support victims of crime and working around the clock to prevent and solve all aspects of crime. Our priorities change throughout the year depending on what the biggest issues are in the community at the time. Keep an eye out on our Facebook page or come and see us to be updated on what these are.

From all at Hedge End Neighbourhood Policing Team, we wish a safe year ahead, to all our Hedge End residents.

PCSO 16542 Stacey Mcdevitt



CHRISTMAS LIGHTS SWITCH ON



We would like to say a big 'Thank You' to everyone who came and took part in the entertainment for the Christmas Lights Switch On. The event fell on November 28th last year, and this time we were lucky with the weather. There was no high winds or rain, which meant the atmosphere was filled with festive joy.

The Council had a marquee for Christmas stalls, which housed local groups and clubs. Accompanied by those who chose to use their own gazebos and stalls to showcase their wares. Father Christmas also joined us in his Grotto, bringing children of Hedge End lots of smiles and laughter, with teacup rides nearby for entertainment. Performances throughout the evening included local singing groups, dancers and school children showcasing their greatest talents for the audience. At 6pm the Mayor of Eastleigh Cllr Darshan Mann turned on the Christmas lights with the help of the Carnival court and queen. Hedge End was officially lit up for the festive season.



Once again, we would like to say a big thank you to all of your support. We look forward to seeing you again at the next Christmas lights switch on.

Cllr. Margaret Allingham

COMMUNITY NEWS

HEDGE END ROTARY

Rotary is a worldwide group of like minded people who work together to “do good in the world” whilst at the same time having fun and making friends.

At Hedge End Rotary we support local schools to enter National competitions such as Youth Speaks, Young Musician, Young Photographer among others. For younger children we sponsor the Life Education Bus that visits local primary schools and, in an entertaining way, helps children understand how to recognise and cope with issues such as internet misuse, bullying, anger management and the many other hazards that modern life can bring. We keep an emergency fund so that when disasters happen we can help as needed, often by sending a Shelterbox Tent equipped to allow a family to have the means to shelter, eat and sleep while they rebuild their lives.

Locally we bring Father Christmas to the Hedge End lights and around the streets meeting local children, last Christmas he was in his brand new sleigh. Every Spring we invite the older residents of Hedge End to an Afternoon Tea Party for sandwiches cakes and, as well as tea, a little drop of wine for those who like it. This year it will be on Sunday, April the 5th, and you can sign up in the Post Office.

Call David Baynes on **07887 369039** or email us on **hedgeendrotary1866@gmail.com**. We would be pleased to welcome you to a trial visit to one of our breakfast meetings and we will even pay for your breakfast. Hope to see you soon.



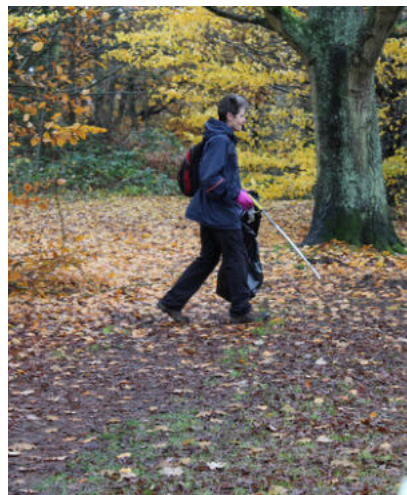
BRIDGET MARY GARDENS



The Hedge End Conservation Volunteers team came together this past winter to plant upwards of a hundred and fifty trees in Bridget Mary Gardens.

The weather was rather cold and wet, however, the team persevered, and in no time at all had planted a native hedgerow of trees and shrubs along the reserve boundary. The recent rain had meant that the ground was soft and so trees being planted sat nicely in their holes with little trouble moving undergrowth.

The land of Bridget Mary Gardens formerly formed part of the Wildern Estate owned by Henry Bruno Aloysius Digby Beste until December 1928 and briefly passed to Edwin George Lansley before conveyance to Dr. Ephraim Sakoschansky, a medical practitioner on 18th February 1929. A further piece of land purchased by Dr. Sakoschansky on 4th December 1931, straightened and widened the boundaries by increasing the area to an acre. This additional piece of land was purchased from Elizabeth Hughes, wife of Frank Caleb Hughes (the Funeral Director).



By his will dated 3rd October 1961 Ephraim Sakoschansky devised and bequeathed the land to be used as a public garden in perpetuity for the benefit of the people of Hedge End and to it being known as “Bridget Mary Gardens” in memory of his late wife.

NEW MUSIC MAKERS



New Music Makers strike Gold

New Music Makers, a Hedge End based Community Choir celebrates its Golden Anniversary this year.

Founder member Thomas Rodaway said, "We started with songs from Joseph's Amazing Technicolour Dream Coat and since then have developed a comprehensive music library of contemporary songs".

Current Chairman Lin Kellaway said, "We enjoy our singing but also work hard preparing for performances so that they are special events for those who attend. We are always looking to bring in new members and anyone who is interested should get in touch".

Formally established in 1970, the choir has since raised tens of thousands of pounds for charity.

Throughout 2020 they are holding various events including their Golden Concert on Saturday 6th June. This is a special concert so make sure you get your tickets early. Website: www.newmusicmakers.com has contact and performance details.

Congratulations New Music Makers - here's to the next 50 years!

Steve Swan



KING'S COMMUNITY CHURCH

COMMUNITY GROUPS AND SERVICES AVAILABLE:

FOR OLDER PEOPLE

A lunch club called HALO, a dementia group called GEMS, and a group for retired men called SHED.

JOB CLUB

Advice and support for those seeking employment. For further information or an appointment, please email: jobclub@kccsouthampton.org or call 07926 254410.

PARISH NURSING

A national organisation, providing some health services through the church's registered nurse.

THE FOOD CENTRE

Support for people during financial crisis, open on Monday and Thursday mornings. It works by referral, achieved by first contacting a local service like Citizens Advice Bureau or doctors' surgeries.

There's also church on Sunday mornings, starting at 10:00am. Please do come along!

Upper Northam Road, Hedge End, SO30 4BZ, tel. 01489 784333, www.kccsouthampton.org.



JUNCTION CAFÉ

Open on weekdays, serving drinks and snacks 7:45am - 4:00pm. Free parking, close to the motorway and the pleasant atmosphere help make it an attractive rendezvous.

FAMILY HUB

Support for parents and children including Chuckles, a parent and toddlers group which meets at 10:00 on Monday and Wednesday mornings in term time.

TREASURED+

An after-school club for children with additional needs and disabilities.




Nigel Paterson

A DAY IN THE LIFE OF...

How long have you been part of the Hedge End Town Council Team?

I have been working with the Hedge End Town Council team now for just over a year. My role is quite new and so there have been lots of exciting things to establish, as well as carrying on some of the long-running traditions of the council such as the local Gazette.

Name three instrumental skills needed as a marketing officer at the council?

- Strong organisational skills 
- Knowledge of Adobe software 
- A keen eye for detail 

What do you find most challenging about what you do?

Working to tight deadlines can be challenging, especially before print, but I enjoy the process. Being part of a small team means that my job can often be quite varied day to day. Anything from collating the next edition of the Gazette to general enquiries, website maintenance, advertising, photography, design, events, etc. Every day is different.

Describe an aspect of your job, which brings you joy?

It gives me great pleasure to support many of the wonderful local community groups and charities we have here in Hedge End. Whether this is through volunteering, promotion of an event, or sharing information with local residents through the many channels we have to communicate. Please do reach out if you would like some support.

VOLUNTEER Flexible hours**
DRIVERS NEEDED!



Volunteer drivers & Call handlers urgently needed to help assist elderly clients to hospital, doctors, dentists or medical appointments. Driving expenses will be paid!

Call: 03330 448842




a Marketing Officer


Hannah




Are there any important dates in 2020 that we should know about?

Yes, lots including some very important anniversaries such as VE Day and Dunkirk to name a few, alongside council events like the Annual Parish Assembly. Keep an eye on the website, Gazette, notice boards and social media, as we place all upcoming events through these channels, and any support from the local community is greatly appreciated. 

What has been your favourite project so far?

I love history and old photographs, therefore I really enjoy any chance I have to explore the history archives. Usually in connection to an event or upcoming Memorial Day. The 125th Anniversary celebrated by Hedge End Town Council last year was a great opportunity to explore some of the wonderful history here prior to the war and during. 

How do you see your job role progressing?

One of the most important aspects of my role is developing communication between Hedge End Town Council and its residents. Moving forward we have developed a communication strategy in which to implement positive changes, to help build upon this relationship. Alongside making information easier and more accessible for the community. 

With Special Thanks to Hannah

WHAT'S ON GUIDE



ARTS & CRAFTS

- Art & Craft Club Tue 1.30-3.30pm | Village Hall | Outings | Demos | 01489 798233
Calligraphy Wed 1.15-3.15pm | 2000 Centre | Beginners welcome | email: mary.noble@btinternet.com
Crafty Saturdays Saturday Mornings | The d@rt Centre | All ages & abilities | 01489 779471
Flower Club 1st Tues, Monthly 7pm | 2000 Centre | Demos | Workshops | 0789 9717755

MUSIC & DANCE

- Dance Junkie Mon Eve | The d@rt Centre | Street Dance Classes | All ages & abilities | 01489 779471
Glee Club Mon 7.15-8.45pm | Drummond Centre | Singers All Ages & Abilities | 07810 127351
Hamble Valley Brass Mon 7.45-9.20pm | Community Band | The d@art Centre, Wildern Lane | 07929 061068
Jamz Dance Zumba, Street & Toddler Classes | Hedge End Club | www.jamzdance.co.uk | 07929 095405
Line Dancing Line dancing classes Fri 10 - 11am | Village Hall | All Levels & Abilities | 07967 631739
New Music Makers Thurs 7.30pm | Methodist Church | Light Music | Show songs | 02380 454285
Perform Fri 4 & 5pm Turnpike Pavilion | Drama, Dance, Sing (Age 4-7's) | enquiries@perform.org.uk
| 0207 2559120
Performing Arts Company (YOUTH) Youth Drama (14-30) | Sun & Mon | Old School House | 01489 690140
Rock Choir Wednesday Eve | Wildern School Main Hall | Everyone Welcome | 01252 714276
Sally Johnson Dance Academy Drummond Community Centre | Ballet, Tap, Modern | 02380 255415
Serious Shapes Company Thurs eve | The d@rt Centre | Adult Dance Classes | 07851 285860
Simply Singers Community Choir Thur Eve | Turnpike Pavilion | sandrafreeman51@yahoo.co.uk
| 02380 554544
Wellstead Community Choir Mon 7.30pm | Salvation Army Community Church | 01489 798681
West End Singers Wed 7.30pm | 2000 Centre | Mixed Voice Choir | 07772781435 | www.westendsingers.co.uk

COMMUNITY CLUBS

- 1st Hedge End Boys' Brigade Methodist Church | Boys 4+ | 01489 7837791
1st Hedge End Girls' Brigade Methodist Church | Girls 4+ | 02380 696222 | info@hedgeendgb.org.uk
31st Itchen North Scout Group Beavers, Cubs, Scouts, Explorers | https://amazonseascouts.org.uk
Bingo Wed 1.30-3.30pm (Tickets 1.15pm) Drummond Centre | 'Good Companions SC' | 01489 780251
Breath Easy Hedge End Fri 2-3pm | Underhill Centre | COPD Sufferers Grp | 02380 403339

WHAT'S ON GUIDE

COMMUNITY CLUBS

Eastleigh Men's Shed	Wed & Thur 09.30 - 14.30pm Pylands Lane, SO31 1BH 07547 918966
Friends Unlimited	8pm, 1st & 3rd Wed Monthly Shamblehurst Barn www.friends-unlimited.org.uk
Girl Guiding Rainbows Brownies Guides Rangers (Itchen Valley Division) to join, visit:	www.girlguiding.org.uk
Hamble Valley U3A	2nd Tues Mon, 2pm St Luke's Church, Shamblehurst www.u3asites.org.uk/hamblevalley
Hedge End Rotary	Meet Tuesdays Botley Park Hotel, Winchester Rd 0844 879 9034
Hedge End Carnival Committee	Help always needed info@hedgeendcarnival.org.uk 01489 785041
Hedge End Horticultural Society	Meets 3rd Mon monthly 7.30pm 2000 Centre Large Hall 02380 471906
Macular Disease Society	Central Vision Loss Support United Reformed Church 01264 321963
Over 60s' Club	Mon 1pm-3.30pm 2000 Centre New members welcome 01489 787 408
Over 60s' Lunch Club	Every Thursday 12.30pm 2000 Centre Call for details 0789 9717755
Pop in Cafe	Wed 10.30am - 12 noon Methodist Church Tea, Coffee, Chat & Book sale Just pop in!
Retirement Club	Tues 1pm - 3.30pm 2000 Centre Cards Bingo 01489 790552
St John Ambulance Badgers	Wed Eve Salvation Army C'mty Centre, Dowd's Farm All ages 07827 883439
Women's Institute	4th Tues Monthly 7.30pm 2000 Centre Crafts Walking 01962 852721

SPORT CLUBS

GOJU RYU Karate	Weekly classes Village Hall All Ages & Abilities www.hsgk.co.uk 01489 782038
Flexercise	Over 50's Keep Fit Wed 11.15am-12.15pm Village Hall 01489 781616
Hedge End Bowling Club	Woodhouse Lane New members always welcome 01489 783690
Hedge End Indoor Bowls Club	Wed 2-4pm, 7.30-9.30pm Sun 7.30-9.30pm Village Hall 07914 987581
Hedge End Junior Cricket Club	Teams for Under 9s & Under 15s Girls & Boys chairman@hejcc.co.uk
Hedge End Ranger FC	League football for all ages Girls & Boys Rodaway Pavilion 07876 037653
Pilates	Mon (10-11am), 2000 Centre Fri (11am-12pm) Village Hall All levels & abilities 07967 631739
Paula's Zumba / 'Fitsteps'	Thurs 6.30pm (Fitsteps) 7.30pm (Zumba) 2000 Centre 07731320440
Steady & Strong Classes	2000 Centre Posture, Mobility & Confidence 01962 846605
Table Tennis Club (Seniors)	Thurs 2-4pm 2000 Centre, Large Hall Beginners Welcome 01489 788237
Table Tennis (Over 60s)	Tues 10am -12 noon Underhill Centre, St Johns Church £2 01489 784985
TASP Unlimited Martial Arts	Every Sunday 18.30 - 20.00pm Drummond Centre 07980 164 551
UECHI RYU Karate	Mon & Thurs 8pm HEYCA 16+ All abilities mail@uechi-ryu.org.uk 07970 684017
Walking Netball	Tues 8pm-9pm Wildern School 079731 30865





OLYMPUS

PROPERTY GROUP

- Extensions
- Landscaping
- New Builds
- Kitchens & Bathrooms
- Loft Conversions
- Planning & Design
- Steelwork



+44 (0)1489 328845

info@olympuspropertygroup.co.uk
www.olympuspropertygroup.co.uk



Paul Freeman

TREE SERVICES

01794 501468 / 07791 285235

www.freemantrees.co.uk



Tree Surgery • Grounds Maintenance • Hedge Cutting

20 year's experience & fully insured



Call now for a free, no obligation quote



IT, Web & Business Services

Bring all your IT and Web services in to a one-stop manageable solution!
Enterprise-grade products and services at SME prices!

01489 341771

www.mr-cloud.co.uk

Based in Hedge End

IT Services

- Managed Services – all inclusive
- IT Support, Installation, Consultancy
- Backup & Disaster Recovery
- Office 365 Deployments & Migrations
- Cloud Services, Azure, AWS, VMware
- Cyber Security & Threat Detection
- Security & Compliance Consulting
- Broadband, Fibre & Leased Lines
- Telecoms & Networks
- Hardware & Software of all kinds!
- SQL Database Development

Web Services

- Website & App Development
- Wordpress, Drupal, WHMCS and more!
- SEO Services, keywords, links, PPC
- Email Hosting, unlimited quantity & size
- Cloud Hosting with 100% network uptime!
- Dedicated Servers & Virtual Private Servers
- SSL Certificates, FREE and Advanced
- Chat Bots, lead generation, customer service
- Penetration Testing, GDPR Compliance
- Hosted Applications for mobile professionals

Business Services

- Business Planning with SWOT
- Business Analyst Services (MBA)
- Business Start-up services
- Marketing Research & Planning
- Social Media Automation
- Robotic Process Automation (RPA)
- PCI Compliance Consulting
- GDPR Compliance Consulting

Get in touch

hello@mr-cloud.co.uk

01489 341771

Technical Support available 24/7

Based in Hedge End, also covering Botley, West End, Eastleigh, Bishops Waltham and surrounding areas.



visit: <http://www.jiggywrigglers.com/jwl-southampton-east/>

Pay as you go!

Sessions in Hedge End, Hamble, Netley, West End and Thornhill

United Reformed Church in Hedge End on Wednesdays!

Jiggy Wrigglers, an award winning, fun and affordable musical activity group for babies, toddlers and preschoolers (0-5 yrs)

No Booking Required



Contact Tonia on: 07833 292879

GAZETTE ADVERTISING

Would you like to feature your business here?



To Find Out More Email: Marketing@hedgeend-tc.gov.uk

Hedge End Town Council makes no representations, endorsements, warranties or guarantees, and is not liable for any loss or damage, in relation to any advertisements placed in the Hedge End Gazette.

LOCAL SERVICES

LOCAL SERVICES

The Berry Theatre, Wildern Lane	02380 652333
The Community Hub (Youth Centre), Wildern Lane	01489 780440
Citizens Advice Bureau (Outreach Service), Salvation Army Community Church, 85 Whites Way	03444 111 306
The D@rt Centre (Arts), Wildern Lane	01489 779471
Hampshire Constabulary	101
Hedge End Household Waste Recycling Centre, Shamblehurst Lane	01489 795499
Hedge End Library, 11 Upper Northam Rd	0300 555 1387
Hedge End Post Office, St Johns Centre, Upper Northam Rd	01489 782066
Jobcentre Plus, Eastleigh Capital House, 100 Southampton Road, SO50 5PB	0800 169 0190
Skyline Gold Radio 102.5FM, St John's Rd	01489 799000
TADIC (Teenage Drop-in, Wednesday 3-6pm), 28 Lower Northam Rd (tadic@btinternet.com)	07879 761660
Tennis Bowls	01489 780440
Wildern Leisure Centre, Wildern Lane	01489 787128

SCHOOLS

Hampshire Education Authority	01962 869611
Berrywood Primary School, Maunsell Way	01489 780068
Freegrounds Infants School, Hobb Lane	01489 782075
Freegrounds Junior School, Hobb Lane	01489 782295
Kings Copse Primary School, Kings Copse Ave	01489 785040
Shamblehurst Primary School, Wildern Lane	01489 782342
Wellstead Primary School, Wellstead Way	01489 799351
Wildern Secondary School, Wildern Lane	01489 783473

HEALTH

St Luke's Surgery, St Lukes Close	01489 783422
The Medical Centre, 24-26 Lower Northam Rd	01489 785722
Hedge End Dental Surgery (NHS), Saracen House, Freegrounds Avenue	01489 790661

PLACES OF WORSHIP

Hedge End Baptist Church, 72A Upper Northam Rd	01489 786260
Hedge End Methodist Church, 42 St John's Rd	02380 739328
Hedge End United Reformed Church, St Johns Rd	01489 787408
Kings Community Church, Upper Northam Close	01489 784333
Our Lady of the Assumption Catholic Church, 3 Freegrounds Rd	02380 449088
St John's The Evangelist Church (C of E), St Johns Rd	01489 790048
St Luke's Church, St Luke's Close	01489 781448
The Salvation Army Community Church, Wellstead Way	01489 798681

COMMUNITY HALLS FOR HIRE

2000 Centre (Large & Small Hall), St Johns Rd (HETC)	01489 780440
Drummond Community Centre, Drummond Rd, Grange Park (HETC)	01489 780440
Norman Rodaway Pavilion, Heathhouse Lane (HETC)	01489 780440
Turnpike Pavilion, Turnpike Way (HETC)	01489 780440
Old School House, St Johns Rd (HETC)	01489 780440
Hedge End Village Hall, St Johns Rd	01784 784962
Methodist Church Hall, St Johns Rd	01489 784823
Underhill Centre, St Johns Rd	01489 790048
United Reformed Church Hall, St Johns Rd	01489 787408

CONTACTS AND COMMITTEES

OFFICE OPENING HOURS

Monday - Thursday: **8.30am - 5pm**
 Friday: **8.30am - 4.30pm**

Saturday, Sunday & Bank Holidays: Closed

CONTACT US

Town Clerk: Sarah Jelley
 Email: Townclerk@hedgeend-tc.gov.uk

General: Commsofficer@hedgeend-tc.gov.uk

Gazette Enquiries: Marketing@hedgeend-tc.gov.uk

Phone: **01489 780440**

Website: www.Hedgeend-tc.gov.uk



HEDGE END TOWN COUNCIL
 2000 CENTRE,
 ST Johns Road,
 Hedge End,
 Southampton,
 Hampshire,
 SO30 4AF

TOWN COUNCIL COMMITTEE MEETINGS

All committee meetings are held at the Town Council Office. All meetings are formal, yet friendly and members of the public are encouraged to attend and take part. All meetings begin promptly at 7pm, with the exception of the third Wednesday Highways & Planning Meeting, which starts at 6.45pm, followed by Full Council which starts at 7.30pm.

- Policy & Resources - First Tuesday monthly**
- Recreation & Amenities - Second Wednesday monthly**
- Highways & Planning - First Wednesday & Third Wednesday monthly**
- Full Council - Third Wednesday monthly**

(Please note that the Highways and Planning Committee meeting for the third Wednesday will determine planning applications only; followed by Full Council)

2020	MARCH	APRIL	MAY	JUNE
POLICY & RESOURCES	3rd	7th	5th	2nd
RECREATION & AMENITIES	11th	8th	13th	10th
HIGHWAYS & PLANNING	4th & 18th	1st & 15th	6th-20th	3rd & 17th
FULL COUNCIL	18th	15th	20th	17th

 Find us on **Facebook** 

 [@HedgeEndTown](https://twitter.com/HedgeEndTown)

 [/Hedge End Town Council](https://www.linkedin.com/company/Hedge-End-Town-Council)



Join Us!

We welcome your ideas & feedback at meetings.