

# GAZETTE

Hedge End

Autumn Edition 2014 | Issue 56

hedgeend-tc.gov.uk

Inside this issue...

Find us on...



## Letters from the **ARCHIVES**

**GREEN FLAG AWARD** 2014/2015

**SHAMBLEHURST LANE** Litter Picking Volunteers

**JAMZ DANCE** Celebrating Another Successful Year

**& more...**

Community News | Council News | Carnival News

What's On Guide | Local Services | Events



## **Hedge End Town Councillors (email: [firstname.lastname@hedgeend-tc.gov.uk](mailto:firstname.lastname@hedgeend-tc.gov.uk))**

Freegrounds	Grange Park East	Grange Park West	St Johns	St Helens	Shamblehurst	Wildern
						
<b>Helen Corben</b> 01489 692406	<b>Daniel Clarke</b> 0783 873 8154	<b>Bruce Tennent</b> 02380 470518	<b>Nathan Khan</b> 07859 128458	<b>Sheila Baynes</b> 01489 690126	<b>Margaret Allingham</b> 01489 798646	<b>Keith Day</b> 01489 797287
						
<b>Val Houghton</b> 01489 781392	<b>Kevin Paddick</b> 07743 240258	<b>Louise Bloom</b> 01489 787336	<b>Rupert Kyrle</b> 01489 796064	<b>Paul Carnell</b> 01489 785216	<b>JennyAnn Hughes</b> 01489 780617	<b>Keith House</b> 01489 798922
						
<b>Shankerlal Sthankiya</b> 01489 690139	<b>Derek Pretty</b> 01489 797213	<b>Cynthia Garton</b> 01489 797213	<b>Jane Welsh</b> 01489 784962	<b>Raymond Worley</b> 01489 783758	<b>Richard Effeny</b> 01489 789388	<b>Emma Norman</b> 01489 690456

**Chair: Sheila Baynes | Vice Chair: Margaret Allingham**

# A Note From...

## The Town Clerk's Desk

**Have you not noticed that no sooner do children go back to school, there is a stark change in the weather heralding that autumn feel? The cool mornings, the condensation on the car windows and the morning dew are all sure signs that the weather is on the turn...**

Indeed, the nights are already beginning to draw in. It is dark already by 8.00pm and before long we will be debating when to flick the heating on again. However, Autumn brings fantastic vibrant colours that only Mother Nature can muster and we are so fortunate in Hedge End to experience the changes in the trees and flowers to find an oasis of rural life in the midst of an essentially urban conurbation. Autumn is the season of new beginnings, harvest festivals, new starts at school/college/university, a refreshing break from the norm, or a welcome return to the norm following the holiday season. It's the season of new textbooks, sharpened pencils and clean white notepads, the first page of which always receives the perfect handwriting treatment!

Having recently returned from holiday and experiencing glimpses of different community life, I was pondering the question of what makes a community? What ingredients come together to form the bond that makes a strong, sustainable and positive environment in which we can all thrive? We all want an environment in which we feel safe, secure and have a genuine connection with those around us. In the modern era of commercialism and globalisation, this type of living environment is becoming a rarity. Let's be honest, many people have never even experienced such a place.

Communities are built through a shared experience, the various aspects of our daily lives that are intrinsically linked with the people around us. It is our shared identity, our culture, heritage and language that bind the people of Hedge End together to form a strong community. This is a delicate balance but one which can accommodate both inward and outward natural migration and still thrive. As long as the integral links are in place, it

can grow, develop and happily adapt to the changes that inevitably come over time.

Imagine being part of such a community. I believe that Hedge End conforms to such a description of a community and that rather than imagining such a community description, we are living a reality. It is surely something we all strive for and aspire towards. A community that is safe and familiar for us to live and bring up our children, something to be proud of and to protect. People need to experience the benefits of being part of a community. That means that those who are the most engaged need to reach out to others, offering support with no strings and showing what can be achieved. Above all, a community is about sharing and communicating knowledge, so that everyone grows. A community can be measured by the amount of effort its members put in to helping each other out or making life a little bit sweeter for its other members. For me, I believe I am part of such a community and I am proud to contribute towards the ethos of 'Serving the Community'.

Finally, I wish all our young people a good start for the new term at school. Right, let's look at the diary, only 114 days to Christmas Day! It will arrive before you know it!

See you soon,

*Kevin*



### REMEMBRANCE DAY PARADE

**SUNDAY 9 NOVEMBER**



**The Parade begins at 10.30am,  
2000 Centre Car Park, St Johns Rd.  
Or, you can join us at 11am, for the  
Annual Service of Remembrance,  
The War Memorial, St Johns Rd.**



# Council News

## Chair's Report

### CHAIR'S REPORT

Hello, I am back as Chairman of Hedge End Town Council after a 17 year gap, having last been Chairman in 1997, when I was Sheila Coslett-Derby. As you can imagine, I am delighted to be given the privilege of serving again.

Since becoming Chairman, events that stand out in my mind are largely connected with commemorations of the First World War. One excellent evening in July was spent at the Berry Theatre, when school pupils of all ages, joined by the adult Community Choir, mounted such a commemoration. Extracts from 'Oh! What a Lovely War' were interspersed with songs of the periods as well as anecdotes. A particularly moving event was a bugler playing 'The Last Post', followed by two minutes silence. Of particular interest was the exhibition in the foyer which gave a short biography of the 36 names of Hedge Enders who lost their lives in the First World War and who are commemorated (with those from the Second World War) on the War Memorial next to the Parish Church of St John the Evangelist in St John's Rd. Alongside this were some other details of ancestors (mainly great grandfathers or uncles) of present day pupils at Wildern School who lived in other areas of the country. Projects, such as these, must be of particular relevance to the young people. Well done, Wildern!

Connected to this, was an event a little later when I witnessed the naming of Shafford Meadows (a new small residential development opposite the entrance to Turnpike Way Recreation Ground). As well as running a local farm, Mr Shafford was the Parish Clerk from 1898 to 1901, had 13 children and sadly lost two of his sons, who are commemorated on the War Memorial, one serving in the Royal Marine Artillery and lost at sea and the other on the Western Front. His Great Granddaughter, accompanied by her husband and son, officially named the road. Do look at the biographical details on the street names mainly around the new roads at Dowd's Farm. They are a little bit of local history.

As I write, the lovely summer has brought large numbers of parents and children to the paddling pool at St John's Recreation Ground. Please remember that the 2000 Centre (Town Council Offices) car park is available for those visiting the pool.

Work is progressing on the cycle way across Greta Park, the woods and into Turnpike Way which will be a very welcome addition. As ever we try to keep Hedge End neat, clean and safe and we welcome suggestions from you all at our Town Council meetings (3rd Wednesday in the month, 7.30 pm at the 2000 Centre, or, indeed any of our Committee meetings.)

September will see meetings resumed by the Council and come next spring, all the 21 seats on the Town Council will be available in the local elections.

Best Wishes

Sheila Baynes - Chair  
[sheila.baynes@hedgeend-tc.gov.uk](mailto:sheila.baynes@hedgeend-tc.gov.uk)

**FANTASTIC  
FIREWORK  
FIESTA &  
FUN FAIR**

**SAT 15 NOVEMBER @ GRETA PARK**

**GATE OPENS 6pm, FIREWORKS AFTER 7pm**

**OTHER ENTERTAINMENT AS YOU WAIT...  
COME EARLY & STAY LATE!**

**Adults £3 Children £1  
Family (2 Adults 2 Children) £7**

**Organised by C. Burnett & Sons in association  
with Hedge End Carnival Committee**

# Council News

## Committee Reports

### RECREATION & AMENITIES REPORT

Well, what a summer so far! Usually we are complaining about the weather, but no, not this year. Glorious weather, too hot for some, but mostly enjoyed by all. However, saying that, I am off to Orkney next week so maybe I will have to take my wellies as the weather seems to be changing!

#### Walkabout

As you know, we don't hold any committee meetings in August but as usual our team from the R&A Committee spent two and a half hours last week walking around our play areas and open spaces. Most were very good but we do need to address a few things, which we felt needed some attention. More waste bins seems to be one of our 'must' provisions. Although we have quite a few, it is funny that they never seem to be in the right spot. Please, as a plea, use the bins as and when you can - it does help to keep Hedge End the way we want it to look.

#### Turnpike Way Sports Field

A new 'goal end' facility in Turnpike Way sports field is in the process of being provided. This should draw attention away from the Pavilion and Practice nets, which have been frequently used in the past as goal posts or kickboards. This funding has come directly from Eastleigh Borough Council (EBC) Infrastructures Levy Grant - once again providing exercise and interest for all ages. Thank you to EBC for this valuable asset to our community.

#### Tennis Courts

Plans are progressing to improve the facilities and lettings of the tennis courts at Woodhouse Lane. HETC hopes to examine tender submissions at the beginning of September with the assistance of grants from EBC, Hampshire Playing Fields and the Lawn Tennis Association. We hope this project should start by January 2015 with a view to a grand opening in the Spring of next year. I am sure this new facility will benefit Hedge End and encourage more tennis to be played and enjoyed within our area.

Regrettably, part of a major piece of play equipment within Nelsons Gardens play area has been vandalised beyond repair. However, this will be rectified by September.

#### Paddling Pool

It has been another very successful year at the Paddling Pool with the fabulous weather we have experienced during June and July.



Unfortunately, due to an incident of vandalism, we had to close the pool for 6 days. However, the Council would like to thank the public for all their kind messages and support saying how important and significant this facility has become to families, many of whom feel that it is a wonderful place to spend their summer holidays at very little cost to themselves and is a great travesty that those destroying enjoyment for others, do not take time to consider the effects and consequences of their wanton behaviour. I also would like to take this opportunity to thank Yon and her team for their excellent service at the paddling pool kiosk this year.

#### Green Flag 2014/2015

I am pleased to say that for the 5<sup>th</sup> year running we have achieved the prestigious Green Flag Award at the Cemetery and the War Memorial.



I am sure everyone who visits our cemetery would like to join me in thanking Ken, a valued member of our Groundstaff team, for all of his hard work and dedication to the cemetery.

Finally, as I write this article, we have once again had an unexpected visit from the travelling community. Hopefully, this will be resolved as soon as possible.

Let's hope this good weather continues for another couple of months and, if you have not yet had your holidays - enjoy!

Jane Welsh - Committee Chair  
[jane.welsh@hedgeend-tc.gov.uk](mailto:jane.welsh@hedgeend-tc.gov.uk)



# Community News

## Tree Warden's Report

### TREE WARDEN'S REPORT

Walking around Hedge End one cannot fail to notice the wide variety and abundance of the colours displayed in the gardens. In particular, the Hydrangeas. I cannot remember ever seeing such a grand display before, with so many differing shades.



Some of the fruit trees are not as good as expected, despite the amount of blossom earlier in the year. Some have no fruit at all, some are over laden but the fruits are small. These have tended to fall from the trees in the high winds and heavy rain we have had in the last couple of weeks.

All in all, the trees and shrubs in the gardens and on council land look very healthy. During the long hot spell, the verges and playing fields did not dry back as much as in former years. This may have been due to the amount of rain during the winter.

With Autumn just around the corner, many shades of leaves will be seen before they fall, giving us a truly colourful display to look forward to. With this in mind and to give you some idea of the amount of leaves that will change colour and fall over this period, a large English Oak alone has about 700,000 leaves. An American Elm can have as many as 5,000,000 leaves and a large apple tree may only have about 50,000 leaves.

**Andrew Jemmett**

Hedge End Carnival Committee

## ANNUAL GENERAL MEETING



7.30pm Thursday 25 September  
Committee Room, Hedge End Village Hall,  
Bursledon Road, Hedge End  
**GET INVOLVED...**

Find out more about your carnival, offer your help...Your community needs you!

### HEDGE END BREAKFAST ROTARY CLUB

## 9<sup>th</sup> CHARITY MOTORCYCLE RIDE

Hedge End Breakfast Rotary Club are running their 9<sup>th</sup> Charity Motorcycle ride on

**SUNDAY 12 OCTOBER 2014**

The ride out will cover a distance of approximately 35 miles, leaving from Budgens in Hedge End (SO30 4DY) at 10.15am. If you would like to take part, meet in Budgens car park at 9.30am onwards. The ride will finish at Popham Airfield (SO21 3BD).

Refreshments will be available before the start & BBQ on arrival at Popham Airfield. The route will be marshalled by members of Unity Riders.

**No Motorways - learners & scooters welcome!**

All proceeds to

**THE HAMPSHIRE  
& IOW AIR AMBULANCE**



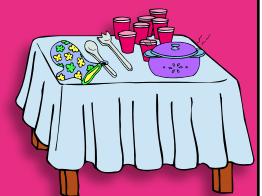
## Hedge End Carnival SENIOR CITIZENS LUNCH

**Sat 4 October 2014**

Open to all Hedge End residents over state pension age, limited to the first 100 applications.

**CLAIM YOUR FREE PLACE** by adding your name to the list at the front counter of

Hedge End Post Office, before 24 Sept 2014. Provided using funds raised at the carnival.



Hedge End Breakfast Rotary Club | Website: [www.hebrcc.co.uk](http://www.hebrcc.co.uk)

# 2014

## SERVING THE COMMUNITY AWARD



**FOR FURTHER INFORMATION &  
APPLICATION FORMS:**

**Please contact the Town Council Offices -**

**Phone: 01489 780440**

**Email: [reception@hedgeend-tc.gov.uk](mailto:reception@hedgeend-tc.gov.uk)**

**Closing Date:  
Midday, Friday 30th  
January 2015**

**HEDGE·END**  
TOWN COUNCIL

*Serving the Community*

**Closing Date:  
Midday, Friday 30th  
January 2015**



## YOUNG PERSON'S SERVING THE COMMUNITY AWARD

**TO OBTAIN AN APPLICATION FORM  
OR FOR FURTHER INFORMATION  
PLEASE CONTACT THE TOWN COUNCIL OFFICES**

**Phone: 01489 780440**

**Email: [reception@hedgeend-tc.gov.uk](mailto:reception@hedgeend-tc.gov.uk)**

**NOMINATE  
NOW!**



# Community News

## Letters from the Archives

**Recently, we have undertaken the arduous task of clearing the Town Council Archives. Of course, the Town Council is required to retain records for up to 7 years, in some instances, however, thanks to the careful and diligent office practice of former Parish Clerks, the Council has accumulated extensive archives which are over 50 years in keeping...**

Not so arduous, is the hidden history within the archives, some of which written with the most eloquent hand, demonstrating the etiquette and courtesies that have been lost to the modern digital and texting age. Abbreviations and smiley faces would have been very much frowned upon in the fifties. These beautiful letters are far more interesting in style and content than those of today. Here are a few examples of letters written to former Councillors upon their retirement, each example, written by Mr. Norman Rodaway, who served the Council for 27 years as Parish Clerk:

### Letter to C. H. Lewry, Esq. dated 17<sup>th</sup> July, 1970

**"I am writing to tell you how much your familiar presence has been missed at the last two Council meetings. The Council wish me to write to you to record their regret that you are no longer with us and, although rather belatedly, to thank you again for the long and selfless service you gave to this Council.**

**Throughout the years your keen judgement and wise council has been a salient feature of this administration, and your kindly nature and compassionate disposition has been an inspiration to us all. I am to thank you most sincerely, not only for the magnificent work on this Council, but also for the invaluable service you have so willingly given to the Parish in general.**

**Your association with this Council goes back 62 years to 1908, when you were appointed Council Clerk, an appointment which you held until 1912. In 1913 you were elected Councillor and served until 1925. Then from 1928 to 1937 you were again a member of this Council. Finally, from 1949 you**

**served another 21 years until you retired in 1970 at the age of 90 years. This record must surely be unequalled in any other Council. The members of Hedge End Parish Council are aware, and deeply grateful, for your lifetime of service. They are unanimous in wishing you a long and happy retirement."**

Born 27<sup>th</sup> November, 1879, Cecil Henry Lewry lived at 80 St. Johns Road and died in September 1971 at the age of 91 years. In his hand written reply he wrote:

**"I did not know that I was of such importance on the Council. I wish that I could agree with your sentiments. I miss the Council very much and hope to attend as a visitor but it will not be the same. I make it a point of making enquiries and keep in touch as near as possible with your doings. My advice is don't spend too much money."**

A living memory to Cecil Lewry, is Lewry Close, located off Allen Road.

1970 also saw the retirements of Cllrs. Gladys Pretoria Hales and Douglas Alfred Sowden:

### Letter to Mrs. G. P. Hales dated 20<sup>th</sup> July, 1970

**"I have been instructed to write to thank you for the 22 long years that you served this Council so faithfully. To the older members, your familiar presence is sadly missed and the new members are aware of your unswerving loyalty. They are also aware of the quiet, unassuming service that you give so willingly to the Parish and are appreciative of your continuing good work."**

Mrs. Hales was born on 23<sup>rd</sup> May, 1900 and died in June 1991, she lived at 96 St. Johns Road. Hales Drive is situated off Granada Road.

### Letter to D. A. Sowden, Esq., dated 8<sup>th</sup> August, 1970

**"The Parish Council has requested me to write to you to express their continuing concern in your health, and to thank you most sincerely for the long years you served so faithfully on this Council. You were a member for 21 years and the Council are aware of the quiet influence you brought to bear on deliberations and your ready willingness to serve in any capacity. They also appreciate the very**



# Community News

## Letters from the Archives

able work you gave to the village generally, particularly your work in connection with the building of the Village Hall and the running of the annual Carnival.”

And very touchingly, the letter continues,

“During recent years you have suffered extreme ill-health, which eventually resulted in your decision to retire from public life. The fortitude with which you bore your illnesses, and the courage with which you fought time and again to overcome, has been an example to us all. We miss your presence with us and trust that you will be granted a measure of good health to compensate to some extent the recent years.”

Mr. Sowden’s address was 19, Wildern Lane, a lovely bungalow which can still be seen today, located at the entrance to Sowden Close. He was Chairman of the Parish Council in 1957.

On 17<sup>th</sup> October, 1962, Norman Rodaway writes to W. H. Abraham, Esq., appealing to the former Councillor to reconsider his decision to resign:

“I have been instructed to write to you immediately to ask you to reconsider your decision. As a reason for your resignation you suggest that your usefulness is now over. With the greatest respect I must tell you that your friends on the Council think this is nonsense. For nearly 50 years you have been a valued member of the Parish Council – your usefulness has never diminished and your wisdom and experience is needed as much today as ever it was. Therefore, I join with the entire Council in asking you to reconsider your resignation. It may well be that you feel that, with the passage of time, the tasks of a Parish Councillor are becoming tiring and onerous; if this is so, then I think your many friends will understand, but in this case you are urged to, at least, carry on to finish your present term of office.”

And then on 1<sup>st</sup> December, 1962:

“It is with sincere regret that I write this letter, for it is my unhappy task to accept, on behalf of the members, your resignation from the Parish Council. Your decision came as a shock to us all and it is the wish of Council as a whole and of each member

individually, to express to you their deep regret that you have found it expedient to take this step. They wish me to say that they are gratefully conscious of your long years of faithful service to the community.

For 50 years you have served as a member of the Hedge End Parish Council, and during these long and eventful years you have not only seen this thriving Parish emerge from an obscure country village, but have worked ceaselessly and unselfishly to improve the lot of the inhabitants.

Every member of this Council is proud to have been associated with you, and will remember with affection and gratitude your unsurpassed and superlative service to this village - a service that was completely selfless and gendered only by a desire to do good to those around you. On all matters under discussion you brought to bear your Christian and God-fearing principles; your arguments were strong and fearless, and your quiet wisdom and infectious good humour were an inspiration to all who were associated with you.

It is hoped by this Council that this letter will be preserved by you so that your future generations may be aware and proud of the illustrious service rendered to the community by one of their family.

It is hoped and trusted by all members of this Council, and the village at large, that God’s richest blessing may be bestowed upon you and that in this, the latter portion of your life, you may be granted continued good health and happiness.”

A wonderful tribute to William Henry Abraham, who was Chairman of the Parish Council on at least 7 occasions, the earliest in 1913 and the last in 1949. Sadly he died just one year after his retirement, at the age of 80 years. He lived at 90, Lower Northam Road. His tribute in Hedge End is likely to be the naming of Raeburn Drive situated off Allen Road, the name of a milk retailing company he founded.

Denise Lowth, Deputy Town Clerk  
[deputytc@hedgeend-tc.gov.uk](mailto:deputytc@hedgeend-tc.gov.uk)



# Carnival News

## Hedge End Carnival 2014

**THANKS TO EVERYONE WHO TOOK PART IN AND SUPPORTED THE CARNIVAL IN JULY. WE HOPE THAT YOU HAD A GOOD TIME...**



Grand Procession

Entries in the procession were down this year. There are only a couple of families that support the children's fancy dress and, for the first time in many years, there were not any entries in the schools category. The street collection came to a total of £1528.28. If you take into account the cost of insurance, bands, trophies

and having St. John Ambulance on duty, then the cost of staging the procession exceeds £2000.

I must apologise for the reduced entertainment on offer at the gala show, as arrangements that had been in place since October started to unravel in the last few days and two featured acts withdrew at lunchtime on carnival day. So, from worrying about how to fit everything in, it suddenly changed to worrying about how to fill the time. Special thanks are due to Hedge End's Nick Magic for stepping in at the last moment and freely giving of his time to entertain the children.



Gala Show

The Carnival Committee is once again struggling to do what it does because of a severe lack of people willing to help. We are indebted to staff from Barclays Bank for their help at the show. You may have noticed that for the first time ever, you could not get a cup of tea at the show. We just did not have anyone to do it. So, if you signed up to say that you wanted tea available, the solution is for you to volunteer to do it next year, it only takes 3 or 4 people, that could be just one family.

In a similar vein, we had the bare minimum number of people needed to carry out the road closures and we also need more people to be stewards in the village centre.

None of these tasks are arduous, they can be enjoyable and only take a couple of hours and you can take pride in keeping the carnival alive. Hedge End Carnival is a real community event, so it is over to you to see what you can do as we really want another 20 people who can find a few hours to support their community on carnival day.



Fund raising for local good causes

**You can contact the Carnival Committee via the website by telephone 01489 785041 or come along to the AGM on 25 September 2014.**

The **Annual Senior Citizens Lunch will be on Saturday 4 October**, if you are over state pension age you are welcome to come along. Just add your name to the list at Hedge End Post Office.

The **Fantastic Firework Fiesta & Fun Fair** is scheduled for **Saturday 15 November**. For the fifth year, admission charges have been held to £3 per adult or a family of two adults and two children can get in for just £7. We invite you to compare our charges with other firework events. This great value is only possible because of the fun fair, so make sure that you bring a few pounds to spend on the fair!

**Carnavalesco**

### HEDGE END FLOWER CLUB



The Hedge End Flower Club would like to thank all members of the public who visited the Flower Club exhibits in the marquee on Carnival Day, especially to all the 258 people who voted for the arrangement they most liked, which was No. 3 'The Landings'. Thank you all so much.

**M Green - Chairman**



# Community News

## Jamz Dance

### JAMZ DANCE CELEBRATE ANOTHER FANTASTIC YEAR IN HEDGE END

JAMZ dance have had a fantastic year so far introducing our unique classes to more and more smiley faces. This is our second year in business and we are very happy and proud to be part of schools / nurseries and a part of the local community. All our classes for the local community have had their own highlights...

The BOPPERS of JAMBOPS have had great fun discovering the wonderful



world of dance, using various props and their imagination skills during the session. We are very proud to have been invited to be part of a few nurseries and preschools this year. Our regular visits each week are a big

achievement for JAMBOPS! Not forgetting producing our very own song and going on live radio with it!



STREETkidz have been working on their fab moves and routines. Some of our highlights this year have been our fantastic displays

including school fetes, summer festivals, fayres and of course, Hedge End Carnival!

The wonderful ladies and gents who come to ZUMBA should be very proud of their displays as well, including our demonstration at the Percy's Pals charity fete and also earlier on in the year raising money for Sport Relief at Sainsburys!



STAGEkidz has come on leaps and bounds this year welcoming more children each time to our FUN school holiday courses of dancing, singing and acting. It has been a pleasure to see such a variety of

children of various age groups come and make friends and be part of a spectacular show on Wildern School stage, every holiday.

Hope you can join a JAMZ class near you soon!  
KEEP HAPPY AND KEEP DANCING ☺

For more info please visit our website:  
[jamzdance.co.uk](http://jamzdance.co.uk) or give Jamie a call on 07929095405



## CHRISTMAS LIGHTS 2014 SWITCH ON EVENT

Would you like to run a stall at this year's event? For further information, please call Hedge End Town Council on 01489 780440.



# Community News

## Round Up

### ALBERT ROAD CEMETERY & WAR MEMORIAL GREEN FLAG AWARD

Hedge End Town Council are pleased to announce that, for the fifth year running, we have received the Green Flag Award (2014 / 2015).

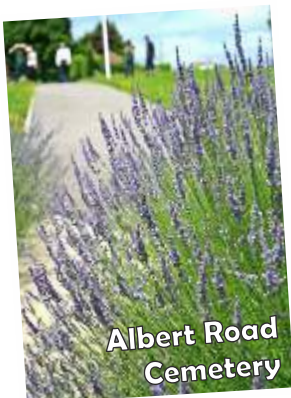
Albert Road Cemetery & the War Memorial are amongst a record-breaking 1,476 parks and green spaces that will receive a prestigious Green Flag Award this year.



The award, handed out by environmental charity Keep Britain Tidy, recognises and rewards the best parks and green spaces across the country. A Green Flag flying overhead is a sign to the public that the space boasts the highest possible standards, is beautifully maintained and has excellent facilities.

Denise Lowth, Deputy Town Clerk said: "We are absolutely delighted to receive a Green Flag Award from Keep Britain Tidy for the 5<sup>th</sup> year running. This Award recognises and highlights that people in Hedge End are benefitting from a green space of the very highest quality."

Keep Britain Tidy's Green Flag Award scheme manager Paul Todd said: "A Green Flag Award provides national recognition for all the parks managers, staff and volunteers who, through their dedication and hard work, have helped to create these fantastic places for everyone to enjoy."



Albert Road Cemetery

### SHAMBLEHURST LANE LITTER PICKING VOLUNTEERS WANTED!

A small group of local residents have formed a litter picking volunteer team to help maintain the natural beauty of Shamblehurst Lane for the benefit of all its residents and users. They contacted Eastleigh Borough Council to advise them of the scheme and have been provided with litter sticks, black sacks and gloves.

Mary Lawrence advises -

"Eastleigh Borough Council's Streetscene workers do clean the lane once per week, but residents feel it needs just a little bit more than this to keep the lane looking beautiful. It really is a fabulous natural local area for walks! A small group of us have done the litter-picking run every Friday since I set the group up, but we could do with some more volunteers! I'd be happy for anyone local to come along as & when they can, providing the weather is pleasant."



Shamblehurst Lane

We meet at 10.30am on Friday mornings at the metal barrier (nearest to the Household Waste and Recycling Centre SO3O 2FN) and anyone who would like to come along, would be most welcome...

Anyone happy to volunteer for this would need to bring their own bottle of water, wear suitable clothing for the weather, bring their own gloves and litter sticks, if they have one, and wear closed in shoes. The litter picking run takes around 1 to 1 hour 30 minutes, usually, depending on numbers and the amount of litter. When we have done the collection, we take all of the litter to the Household and Recycling Centre in Shamblehurst Lane."





# Community News

## Round Up

### LOCAL NHS LAUNCHES CAMPAIGN TO PROMOTE PATIENT CHOICE

The majority of residents of West Hampshire aren't aware that they can choose which hospital they are referred to, NHS analysis shows. West Hampshire Clinical Commissioning Group (CCG) has therefore launched a campaign to tell people about their right to choice. This legal right means that patients can choose from any hospital offering a suitable treatment for their condition that meets NHS standards and costs.

Dr Sean Watters, Clinical Director at West Hampshire CCG commented:

*'We know that people traditionally tend to go to their nearest hospital when they are referred by their GP, but that doesn't need to be the case. Evidence shows that if you choose a hospital in which you feel comfortable and confident, both the result of your treatment and your experience while you're in hospital are likely to be better.'*

*'There are actually many reasons why you might prefer one hospital to another and you can choose according to what matters most to you. That could be location, waiting times, reputation, clinical performance, visiting policies, parking facilities, GP advice or patients' comments.'*

The CCG is therefore actively encouraging patients to consider the options with their GP to ensure that they make the best choice for their circumstances. The campaign also highlights that if a patient needs to see a consultant or specialist and has to wait longer than 18 weeks, they have the right to ask to go to another hospital.

The CCG, which plans and buys the health care for almost 546,000 residents in west Hampshire wants patients to understand their rights and how best to exercise them. Therefore, members of the public will see advertising in newspapers and around the community including at GP practices, libraries,

pharmacies, community centres and schools encouraging them to learn more about their right to choose.

**For more information about choice, the campaign and the work done by West Hampshire CCG please visit our website [www.westhampshireccg.nhs.uk](http://www.westhampshireccg.nhs.uk)**

### FOR DEBT HELP ON YOUR DOORSTEP

When financial trouble hits, it's easy to feel alone. It can seem like no one can help or that no one wants to. Local debt counselling charity Christians Against Poverty (CAP) really can help and hundreds of people call each week to begin their journey towards financial freedom.

Experience has shown that there is always a way out and no debt is too big or too small to deal with. In fact, if you are experiencing debt problems then you can get free, expert advice without even leaving your house.

CAP visits people in their own homes, negotiates with creditors and supports people right up until they are debt free. On top of this, the whole service is free of charge and available to anyone regardless of age, faith, gender or background.

In the UK, there are now over 260 CAP Debt Centres and one of these is here in Hedge End. This means that local people can access the service, which is recommended by TV's Money Saving Expert, Martin Lewis.

Hedge End CAP Centre Manager, Neil Harknett said, "Every week we see people who think that there is no way out of their money problems and every week we offer them a solution that really works. If you are struggling with debt then there is hope. We can help you."

**To find out more, call Christians Against Poverty's free phone number: 0800 328 0006 or visit: [www.capuk.org](http://www.capuk.org)**



# What's On Guide

<b>1ST HEDGE END BOYS' BRIGADE</b>	<b>Methodist Church   Boys 6+   01489 783779</b>
<b>1ST HEDGE END GIRLS' BRIGADE</b>	<b>Methodist Church   Girls 4+   02380 696222   <a href="mailto:info@hedgeendgb.org.uk">info@hedgeendgb.org.uk</a></b>
<b>31ST ITCHEN NORTH (AMAZON) SEA SCOUTS</b>	<b>Beavers, Cubs, Scouts, Explorers   07900 277379   <a href="http://amazonseascouts.org">amazonseascouts.org</a></b>
<b>ART &amp; CRAFT CLUB</b>	<b>Tue 1.30-3.30pm   Village Hall   Outings   Demos   01489 798233</b>
<b>BINGO</b>	<b>Wed 1.30-3.30pm (Tickets 1.15pm) Drummond Centre   'Good Companions SC'   01489 789727</b>
<b>BREATHE EASY HEDGE END</b>	<b>Fri 2-3pm   Underhill Centre   COPD Sufferers Grp   02380 403339</b>
<b>BUMPS &amp; BEYOND</b>	<b>Postnatal exercise class   Fri 1-2.30pm   2000 Centre   Bring your baby too!   07814 580139</b>
<b>CALLIGRAPHY</b>	<b>Wed 1.15-3.15pm   2000 Centre   Beginners welcome   email: <a href="mailto:mary.noble@btinternet.com">mary.noble@btinternet.com</a></b>
<b>CHEER-A-CALITY</b>	<b>New Cheerleading squad   Wed   Sal'tion Army Community Centre   Ages 4-16   07736320103</b>
<b>CRAFTY SATURDAYS</b>	<b>Saturday Mornings   The d.art Centre   All ages &amp; abilities   01489 779471</b>
<b>DANCE JUNKIE</b>	<b>Mon Eve   Dart Centre   Street Dance Classes   All ages &amp; abilities   01489 779471</b>
<b>FLOWER CLUB</b>	<b>1st Tues, Monthly 7pm   2000 Centre   Demos   Workshops   01489 783115</b>
<b>GIRL GUIDING</b>	<b>Rainbows   Brownies   Guides - email the 'Join Us' Co-ordinator: <a href="mailto:guiding@hotmail.co.uk">guiding@hotmail.co.uk</a></b>
<b>GLEE CLUB</b>	<b>Mon 7.15-8.45pm   Drummond Centre   Singers- All Ages &amp; Abilities   07810 127351</b>
<b>GOJU RYU KARATE</b>	<b>Weekly classes   Village Hall   All Ages &amp; Abilities   <a href="http://www.hsgk.co.uk">www.hsgk.co.uk</a>   01489 782038</b>
<b>HAMBLE VALLEY U3A</b>	<b>2nd Tues Monthly, 2pm   Hedge End Club   <a href="http://www.u3asites.org.uk/hamblevalley">www.u3asites.org.uk/hamblevalley</a></b>
<b>HAMBLE VALLEY BRASS</b>	<b>Mon 7.45-9.20pm   Community Band   Dart Centre, Wildern Lane   07929 061068</b>
<b>HEDGE END BOWLING CLUB</b>	<b>Woodhouse Lane   New members always welcome   01489 783690</b>
<b>HEDGE END BREAKFAST ROTARY CLUB</b>	<b>Meets Tuesday   Botley Park Hotel   01489 690126</b>
<b>HEDGE END CARNIVAL COMMITTEE</b>	<b>Help always needed   <a href="mailto:info@hedgeendcarnival.org.uk">info@hedgeendcarnival.org.uk</a>   01489 785041</b>
<b>HEDGE END INDOOR BOWLS CLUB</b>	<b>Wed 2-4pm, 7.30-9.30pm   Sun 7.30-9.30pm   Village Hall   Join Us!</b>
<b>HEDGE END JUNIOR CRICKET CLUB</b>	<b>U16s   Girls &amp; Boys   <a href="mailto:grahamelliott1@virginmedia.com">grahamelliott1@virginmedia.com</a>   07825 267698</b>
<b>HEDGE END RANGERS FC</b>	<b>League football for all ages   Girls &amp; Boys   Rodaway Pavilion   07983 355449</b>
<b>HORTICULTURAL SOCIETY</b>	<b>3rd Mon, Monthly   2000 Centre   Gardening   Demos   01489 690481</b>
<b>JAMZ DANCE</b>	<b>Zumba, Street &amp; Toddler Classes   Hedge End Club   <a href="http://www.jamzdance.co.uk">www.jamzdance.co.uk</a>   07929 095405</b>
<b>MACULAR DISEASE SOCIETY</b>	<b>Central Vision Loss Support   St Lukes Church   01264 321963</b>
<b>NEW MUSIC MAKERS</b>	<b>Thurs 7.30pm   Methodist Church   Light Music   Show songs   02380 454285</b>
<b>OVER 60'S CLUB</b>	<b>Mon 1pm-3.30pm   2000 Centre   New members welcome   01489 787408</b>
<b>POP IN CAFE</b>	<b>Wed 10.30am - 12noon   Methodist Church   Tea, Coffee, Chat &amp; Booksale   Just pop in!</b>
<b>PILATES</b>	<b>Mon 10-11am, 2000 Centre   Fri 11am-12pm HEYCA   All levels &amp; abilities   07967 631739</b>
<b>PERFORMING ARTS COMPANY (YOUTH)</b>	<b>Youth Drama (14-30)   Sun &amp; Mon   HEYCA   01489 690140</b>
<b>RETIREMENT CLUB</b>	<b>Tue 1.30 - 4pm   2000 Centre   Cards   Bingo   Outings   01489 783469</b>
<b>SALLY JOHNSON DANCE ACADEMY</b>	<b>Drummond Centre   Ballet, Tap, Modern   02380 255415</b>
<b>ST JOHN AMBULANCE BADGERS</b>	<b>Thurs Eve   Salvation Army Cmty Centre, Dowds Farm   All ages   07827 883439</b>
<b>ST JOHN'S CAFE</b>	<b>1st &amp; 3rd Friday, monthly, 10-12noon   Tea/Coffee/Cakes &amp; Chat   01489 790048</b>
<b>SERIOUS SHAPES DANCE COMPANY</b>	<b>Thurs eve   Dart Centre   Adult Dance Classes   07851 285860</b>
<b>STEADY &amp; STRONG CLASSES</b>	<b>Starts Jan '14   2000 Centre   Posture, Mobility &amp; Confidence   01962 846605</b>
<b>TAEKWONDO</b>	<b>Mon Eve   Rodaway Pavilion   Families welcome   All ages &amp; abilities   07801706188</b>
<b>UECHI RYU KARATE</b>	<b>Mon &amp; Thurs 8pm   HEYCA   16+ All abilities   07970 684017   <a href="mailto:mail@uechi-ryu.org.uk">mail@uechi-ryu.org.uk</a></b>
<b>WELLSTEAD COMMUNITY CHOIR</b>	<b>Mon Eve 7.30pm   Wellstead Primary School   01489 798681</b>
<b>WEST END CARNIVAL SHOW BAND</b>	<b>Tue Eve   HE Village Hall   07851 013322   <a href="mailto:info@wecsband.co.uk">info@wecsband.co.uk</a></b>
<b>WEST END SINGERS</b>	<b>Wed 7.30pm   2000 Centre   Mixed Voice Choir   02380 404881   <a href="http://www.westendsingers.co.uk">www.westendsingers.co.uk</a></b>
<b>WOMEN'S INSTITUTE</b>	<b>4th Tues Monthly 7.30pm   2000 Centre   Crafts   Walking   01962 852721</b>





# Local Services

## LOCAL SERVICES

The Berry Theatre , Wildern Lane	01489 799499
The Box (Youth Centre) , Wildern Lane	01489 789638
Citizens Advice Bureau (CAB), Village Hall	01489 796651
Civic Amenity Site, Shamblehurst Lane	01489 780028
The D@rt Centre (Arts), Wildern Lane	01489 779471
Hampshire Constabulary, Hedge End Police Station, St Johns Road	08450 454545
Hedge End Library, Upper Northam Rd	0845 6035631
Post Office, Upper Northam Rd	01489 782066
Skyline Gold Radio 102.5FM, St John's Rd	01489 799000
TADIC (Teenage Drop-in), Lower Northam Rd	01489 782727
Tennis   Bowls   Putting Green, Pavilion Rd (Apr-Sep)	01489 780440
Wildern Leisure Centre, Wildern Lane	01489 787128

## SCHOOLS

Hampshire Education Authority	01962 869611
Berrywood Primary School, Maunsell Way	01489 780068
Freegrounds Infants School, Hobb Lane	01489 782075
Freegrounds Junior School, Hobb Lane	01489 782295
Kings Copse Primary School, Kings Copse Ave	01489 785040
Shamblehurst Primary School , Wildern Lane	01489 782342
Wellstead Primary School, Wellstead Way	01489 799351
Wildern Secondary School, Wildern Lane	01489 783473

## HEALTH

St Luke's Surgery, St Lukes Close	01489 783422
The Medical Centre, 24-26 Lower Northam Rd	01489 785722
Hedge End Dental Surgery (NHS), Saracen House, Freegrounds Avenue	01489 790661

## PLACES OF WORSHIP

Hedge End Baptist Church, Upper Northam Rd	01489 786260
Hedge End Methodist Church, St John's Rd	01489 790604
Hedge End United Reformed Church , St Johns Rd	01489 787408
Kings Community Church, Upper Northam Close	01489 784333
Our Lady of the Assumption, Freegrounds Rd	02380 449088
St John's The Evangelist Church, St Johns Rd	01489 790048
St Luke's Church, St Luke's Close	01489 781448
The Salvation Army, Wellstead Way	01489 798681

## COMMUNITY HALLS FOR HIRE

2000 Centre ( Large & Small Hall), St Johns Rd (HETC)	01489 780440
Baden Powell Lodge, Pavilion Road	01489 781838
Drummond Community Centre, Drummond Rd, Grange Park (HETC)	01489 780440
Norman Rodaway Pavilion, Heathhouse Lane ( HETC)	01489 780440
Turnpike Pavilion, Turnpike Way (HETC)	01489 780440
Hedge End Village Hall, St Johns Rd	01489 784962
Hedge End Youth & Community Association Halls (Old School House), St Johns Rd	01489 690140
Methodist Church Hall, St Johns Rd	01489 784823
Underhill Centre, St Johns Rd	01489 790048
United Reformed Church Hall, St Johns Rd	01489 787408

# Hedge End Town Council

## Contacts & Committees

**Hedge End Town Council**  
**2000 Centre**  
**St Johns Road**  
**Hedge End**  
**Southampton**  
**Hampshire**  
**SO30 4AF**

**Town Clerk: Kevin Glyn-Davies BA (Hons) PGDip**  
**[townclerk@hedgeend-tc.gov.uk](mailto:townclerk@hedgeend-tc.gov.uk)**  
**Deputy Town Clerk: Denise Lowth**  
**[deputytc@hedgeend-tc.gov.uk](mailto:deputytc@hedgeend-tc.gov.uk)**  
**General Email: [reception@hedgeend-tc.gov.uk](mailto:reception@hedgeend-tc.gov.uk)**  
**Phone: 01489 780440**  
**Fax: 01489 799984**  
**Website: [www.hedgeend-tc.gov.uk](http://www.hedgeend-tc.gov.uk)**

### Town Council Committee Meetings

**All committee meetings are held at the Town Council Office. All meetings are formal, yet friendly and members of the public are encouraged to attend and take part. All meetings begin promptly at 7pm with the exception of the third Wednesday Highways & Planning Meeting, which starts at 6.45pm followed by Full Council which starts at 7.30pm.**

**Recreation & Amenities - Second Wednesday monthly**  
**Finance & Administration - First Tuesday monthly**  
**Highways & Planning - First Wednesday & Third Wednesday monthly**  
**Full Council - Third Wednesday monthly**  
**Community and Culture - Second Tuesday monthly**

**(Please note that the Highways and Planning Committee meeting for the third Wednesday will determine planning applications only; followed by Full Council)**

2014	Community & Culture	Finance	Full Council	Highways & Planning	Recreation & Amenities
September	9	2	17	3 & 17	10
October	14	7	15	1 & 15	8
November	11	4	19	5 & 19	12
December	9	2	17	3 & 17	10

**Deadline for contributions to the  
Autumn Gazette - 24 October 2014**