

GAZETTE

SPRING EDITION 2019

Hedge End Rotary Club
Raises 3.5k for Charity

2019 Parish
Assembly Confirmed
for the 14th May

A Day in the Life of a...
PCSO

Dowd's Farm Play
Park Has Brand New
Extension

Paddling Pool
Opens Soon!

Volunteers Needed
for Hedge End
Carnival 2019

Hedge End Town Council
Appoints New Town
Clerk

Spot All the Easter
Eggs!



• HEDGE END TOWN COUNCILLORS •



Freegrounds

Chair: C & C*

Margaret Allingham
01489 798646



St Johns

Stephanie Arnold
07713 131085



Shamblehurst

George Brown



St Helens

Chair: H & P*

Paul Carnell
01489 785216



Freegrounds

Helen Corben
01489 692406



Grange Park East

Chair of Council

Ian Corben
07561 343858



Grange Park West

Cynthia Garton
01489 797213



St Johns

Jerry Hall
07762 612044



Shamblehurst

Chair: Personnel & Strategy

Keith House
07768 357918



Wildern

Patricia Jenkins
01489 786265



Wildern

John Jupe
01489 780293



St Helens

Vice Chair of Council

Lucy Jurd
07730 072606



Grange Park West

David Kinloch
07875 232557



Shamblehurst

James Mitchell
0800 316 3435



Wildern

Cliff Morris
07848 946822



Grange Park East

Chair: F & A*

Derek Pretty
01489 797213



Freegrounds

Shankerlal Sthankiya
01489 690139



Grange Park West

Bruce Tennent
02380 470518

F & A* = Finance & Administration Committee

R & A* = Recreation & Amenities Committee

H & P* = Highways & Planning Committee

C & C* = Community & Culture Committee



Grange Park East

Ben Thomas
01489 790701



St Johns

Chair: R & A*
Jane Welsh
01489 784962



St Helens

Christopher Yates
07881021165

(Email: Firstname.Lastname@Hedgeend-tc.gov.uk)

A Note From...



Chairman &

Since the last edition of the Gazette, I am sure much has happened for you as it has for us here at the Town Council. Christmas is in the distant past, the weather predictably has been unpredictable, and life goes on as change happens around us.

You may have noticed that it is not often you see a note from... The Chairman. The reason being that Hedge End Town Council is going through its own period of change with Kevin our clerk of 16 years retiring at the end of last year. The councillors thanked him at the last full council for his valuable contribution over the years and wished him well on his future ventures.

This created a role for a new Town Clerk, something which many of us had not had to consider before. A number of the councillors including myself undertook the recruitment process and are delighted to announce that we appointed Sarah Jelley as our New Town Clerk.



I'm thrilled to be joining Hedge End Town Council at this exciting time with spring just around the corner and some great town events already in progress. I'm sure there will be lots of things people want to make me aware of and I will be keeping the Town Clerk email address, so I encourage you to drop me a line via the contact details on the back page.

As Cllr Corben said I will have just started at the time of publication with this being my first official work on behalf of the Town Council. I already know my first week will be about meeting new people, understanding the way the council works and preparing the papers for full council the following week so do come along to our meetings where members of the public are always welcome.

I am coming from a county authority of where I was the lead for Communities, Town and Parish Councils, Councillor and Military Liaison which hopefully stands me in good stead for dealing with, and finding innovative solutions to community related issues. I have spent a number of years in this area of work at a national, regional and local level and hopefully never fail to forget what might seem trivial at those levels have a huge impact on people's lives.

The Town Clerk's Desk

Sarah comes to us from a county authority and brings a wealth of experience of working across communities, partners and at a county and district level which I am sure will be helpful when she needs to navigate highways issues. Sarah joined us on the 11th of February just prior to this publication, and Sarah hopes to be an active part of the Hedge End Community. She will of course be working with your local councillors to understand what Hedge End means to you, particularly looking for events and stories that showcase Hedge End as a place where people want to be involved and are proud to live.

So, on that final note, I am going to hand over to Sarah for her to say a bit about herself and I hope to see you at future council meetings.

Chairman of the Council - Cllr. Ian Corben



I have an attachment to the area having moved to Southampton 8 years ago to pursue my love of the water in particular sailing and spending some time working in the Marine industry in Bursledon so the area is not completely new to me. I do have a tendency to get lost on a map but can somehow manage a navigational chart with ease so please do forgive me if I ask, 'where is that?'

I want to spend as much time as I can out and about in the community understanding the area and what people value and look forward to meeting you on my travels. Do stop me just for a chat or if you see me at one of our many sites and buildings.

Town Clerk - Sarah Jelley



COUNCIL NEWS

KEVIN'S LEAVING PARTY



Kevin Glyn-Davis has spent sixteen loyal years appointed as Town Clerk, serving the Hedge End community. So, it was only fitting that the members of the Hedge End Town Council all clubbed together to give Kevin a great send off. One which represented the appreciation shown by those who have worked so closely with Kevin over the years.

Councillor Keith House presented a hamper and rather fitting fountain pen to accompany a celebratory cake to say "Thank you, you will be missed". We wish Kevin the best of luck in his future endeavours.

Thank you



COMMUNITY & CULTURE

After a year of planning by the Community & Culture Committee, alongside the residents of Hedge End arranging their stalls and entertainment, we were all set for a great 'switch on'. Sadly, the weather was against us, which brought high winds and conditions classed as dangerous in which to erect marquees. In the interest of safety, we decided to cancel the entertainment and stalls which was a great shame for all of us.

So, we held the 'switch on' of the Christmas lights as arranged, with the Deputy Mayor Councillor Darshan Mann, the Carnival Queen & Court which was lovely. However, it was incredibly heart-warming to see so many people turning up to support the evening. A big thank you, to everyone who braved the wind to attend this annual event.

We are hopeful this year will be kind to us with better weather, so keep your fingers crossed! Get planning as the Community & Culture Committee now start to make sure everything is in place for the next 'switch on' in November.

Cllr. Margaret Allingham - Chair - Community & Culture Committee



RECREATION & AMENITIES

With Spring around the corner, we can look forward to the daffodils springing up along our grass verges in and around our village roads. What a lovely thought! Even though winter is quite a quick season, there has been plenty happening at our Dowd's Farm Play Park.

As promised an extension to the play area has just been completed. In a short time, it has been open, we have had many compliments, both from parents and their young people. It really has enhanced the area with more activity items available.

Also, the lake at Dowd's Farm is being improved and we have agreed to let a fish angling club use the place. They are hoping they will be able to attract new customers, whether they are novices or existing anglers to join them.

If you wish to join them all enquires can be made through the Town Council Offices. I am sure this will prove to be a great pastime for all our local residents.

Cllr. Jane Welsh- Chair- Recreation & Amenities Committee

Read On →

COUNCIL NEWS

RECREATION & AMENITIES

Whilst walking around the park, I was however a bit disappointed to see quite a lot of dog mess, which has not been cleared up. Please help by clearing up, and for those who may not realise, all our litter bins are dual purpose so please use them at all times. Thank you!

I shall be visiting the allotments this month to do my quarterly check. No doubt all our enthusiasts will be preparing their plots for the coming year. Also, this April we shall be installing a new toilet facility for users of Spring Fields. I am sure this will go down as a great asset for all holders!

With warmer weather to come, and lots to do in our gardens, summer is truly on its way!

Cllr. Jane Welsh- Chair- Recreation & Amenities Committee

FINANCE

Each year every Town and Parish Council is able to submit a budget precept to its District or Borough Council to cover its local expenditure, not undertaken by the District or Borough Council. This precept forms part of every households Council Tax Bill. This amount is identified on the Bill itself. The Council Tax applicable to each household is then calculated to include the precept from the County Council, Borough Council, Police and the Fire Services.

This year Hedge End Town Council will need to raise its element of Council Tax by 1.5%. This equates to £1.33 per annum for a band D property. This is needed because of continued increases in our costs which we can no longer absorb without reducing our services.

The money that will be raised by the precept will be used to cover all of the local facilities that the Town Council undertakes. This includes providing and maintaining playing fields, recreation grounds, play areas, allotments, the cemetery, and many of the community buildings in Hedge End.



There are many worthwhile projects that need consideration as part of this process. As part of the procedure the Town Clerk and her staff continue to look for ways in which we can make savings on the budgeted costs.

This year we have completed a large extension to the Dowd's Farm Play Area and have begun the refurbishment of the HEYCA community building in the centre of Hedge End.

As I have commented in previous years, we will only implement changes providing there is no detriment to our standard of service. They are then put into place as soon as practical. We would be reluctant to make changes simply to save money.

We are always looking at ways to reduce costs and become more energy efficient. The solar PV panels installed several years ago have proven most effective allowing us to generate income and free electricity and we are looking to make our buildings more energy efficient to maximise the benefits from these panels.

Remember the Finance and Administration Committee meets monthly, and that our meetings are open to the public. We are always pleased to welcome visitors.

Cllr. Derek Pretty- Chair- Finance Committee

COMMUNITY NEWS

To be Featured in the Gazette, will be on a First come First Serve Basis. Please Enquire.

HEDGE END ROTARY

Father Christmas had a wonderful time travelling around Hedge End in December. He managed to visit families and children in more streets than in recent years because so many elves came to help. As well as our club there were elves from Southampton Clausentum Rotary Club and lots of our business partners and supporters. Santa also enjoyed his appearances at Tesco Bursledon where he met even more children, He was disappointed not to be at the Hedge End Lights 'Switch On' as he was already on his way when he heard that his grotto would not be there as it was too wet and windy for it to be put up. He hopes that all the children will come again next year when we hope the weather will be better.

The elves were very grateful for all the donations that they received, and they reported that £3,469 had been collected for local charities and other Rotary projects. This will be shared by Hedge End and Clausentum Rotary clubs.

As 2019 progresses, we will be ready to give our support and service wherever it is needed, and look forward to another year of friendship and fun.

By David Baynes - Hedge End Rotary



CANCER RESEARCH

December is a special month, a month of giving to worthy causes and those less fortunate than ourselves. This past December the residents of Hedge End did not disappoint in their generosity, by supporting Mr Cranston and his sons raise money for Cancer Research, a charity which is very close to their hearts.

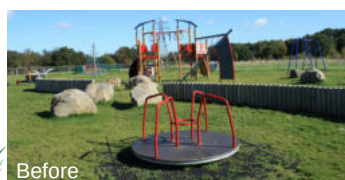
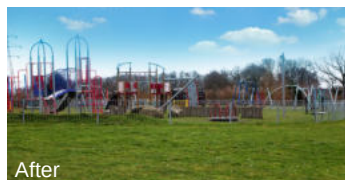
For the past couple of years Mr Cranston and his sons have braved the weather outside to bring some Christmas cheer, by playing Christmas songs on their Euphonium and Tuba underneath the village bandstand to the residents of Hedge End. Hoping to carry on the tradition in memory of a close family member, we hope that this year we will also be blessed with their wonderful music around the festive season.



DOWD'S FARM PLAY PARK

At the start of January Dowd's Farm Play Park has been met with great excitement by little ones across Hedge End, in the opening of the brand-new extension to the original play park. From a zip line to all sorts of climbing frames and swings, there is something for all little adventurers to enjoy.

The play park was jointly funded by Hedge End Town Council and Eastleigh Borough Council.



YOUTH VOLUNTEERS NEEDED!

VOLUNTEERS NEEDED!

Can you spare a few hours each week to volunteer with children and young people?

As a Youth Worker you will gain experience in working with young people aged 8 to 21* years offering both formal and informal education. Full training & DBS provided.



FOR MORE INFORMATION OR TO APPLY PLEASE E-MAIL A CV TO: DONNA.LOVE@HEDGEEND-TC.GOV.UK
TEL: 01489 780440

More info at Youth @ The Community Hub, Wildern Lane, Hedge End, SO30 4EJ



Older person's

HEDGE END ROTARY

Afternoon Tea Party

FOR THE RESIDENTS OF HEDGE END
SUNDAY 14TH APRIL 2.15PM-4.30PM

*Book your free space at the Hedge End Post Office.
Add your name to the list!*

Afternoon Tea taking place at 2000 Centre, St Johns Road, Hedge End, SO30 4AF

PETS CHANGE LIVES, WE CHANGE THEIRS



WE NEED YOUR HELP!

Do you have any unwanted items such as Teddies or Soft Toys? Want to do your bit to help a local pet rescue charity?

We're always looking for items that can help raise money at our fundraising events such as...

Smellies, Teddies, Chocolate, Wine & New Items

Any donations can be dropped off at our Blue Cross rehoming centre in Southampton
Thank You!



PADDLING POOL



Opens in May!

The date will be confirmed very soon so please keep your eyes peeled!



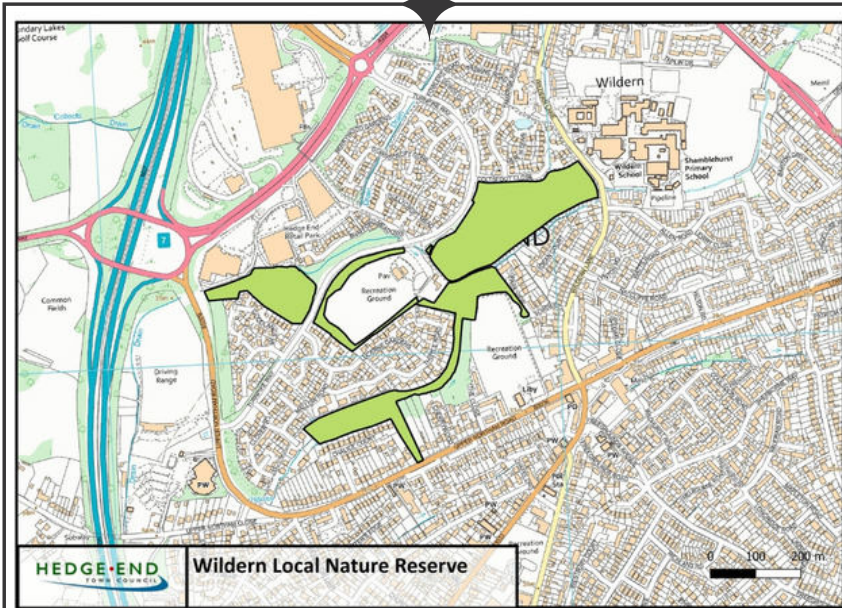
The popular Hedge End paddling pool will be opening this May for children up to the age of 12 years. Come down and have some fun splashing around in the sunshine.



CONSERVATION



WILDERN LOCAL NATURE RESERVE



Great news! Wildern Local Nature Reserve (LNR) is now a reality following the Council's successful application to Natural England. Founded on 3 Sites of Importance for Nature Conservation (SINCs), namely Bridget Mary Gardens, Hogsty Copse and Wildern Nature Park, it is a link in Hedge End's urban wildlife corridor. This part runs from Wildern Lane to Upper Northam Road.

LNR status provides protection for the area in recognition of notable flora and fauna, as well as the public amenity and will be a great impetus for conservation efforts.

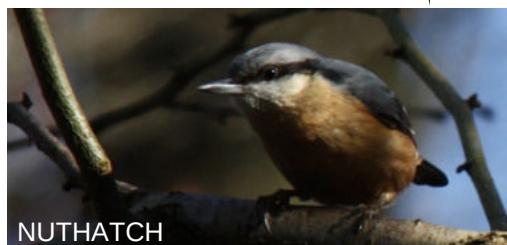
Friends of Wildern Nature Park (now Wildern LNR) worked closely with Hedge End TC over the last year to achieve this, developing a 10 year Management Plan.

Wildern LNR is, in essence, wetlands – a dozen ponds, two spring-fed brooks, two flooded meadows, flooded woodland, and a valley mire. More so than the countryside, this habitat mix mimics the lowlands landscape of eons ago, before human intervention that drained the land, through to industrial farming.

NATIONAL PARKS AND ACCESS TO THE COUNTRYSIDE ACT 1949

DECLARATION OF NATURE RESERVE TOWN OF HEDGE END COUNTY OF HAMPSHIRE

NOTICE IS HEREBY GIVEN IN PURSUANCE OF SECTION 19 OF THE ABOVE-MENTIONED ACT THAT BY THE LOCAL NATURE RESERVE DECLARATION MADE ON THE DAY OF 09/01/2019 10 HECTARES OR THEREABOUTS SITUATION IN THE TOWN OF HEDGE END IN THE COUNTY OF HAMPSHIRE AND SHOWN EDGED ON THE PLAN ATTACHED TO THE SAID DECLARATION AND THAT THE SAID LAND IS BEING MANAGED AS A NATURE RESERVE.



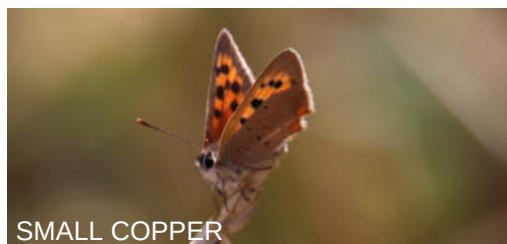
NUTHATCH



ROBIN



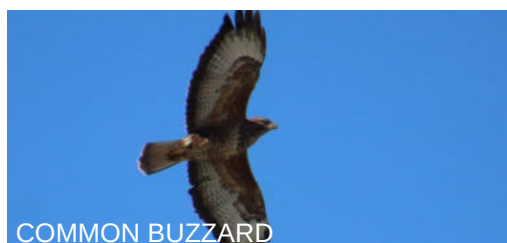
BEAUTIFUL DEMOISELLE



SMALL COPPER



ROE DEER



COMMON BUZZARD



GREY WAGTAIL



GOLDEN-RINGED DRAGONFLY



PURPLE HAIRSTREAK



COMMON LIZARD

So, what might you expect to see? Recording our biodiversity has been a key activity for Friends of Wildern LNR. What can be found on your doorstep may be surprising, with 14 dragonfly and 26 butterfly species photographed in our first full year (2018), whilst 58 bird species were spotted, from Lesser Redpoll to Little Egret, Sparrow hawk to Stock Dove.

Hedge End Conservation Volunteers organised by the Council, in partnership with Friends of Wildern LNR, have, over the last year or so, been working to improve the amenity, having worked on two ponds, litter removal, along with pathway clearance.

The Town Council's operations manager confirms resumption of grazing in Coltsfoot paddock is planned, to maintain and improve biodiversity – the modern day equivalent of Auroch (huge wild cattle) and Tarpan (horses), now extinct (not to mention the likes of Elk, Bison, Beaver, Boar) – all of which made their ecological mark, and from which, over many thousands of years our flora and fauna evolved.

This haven even saw the appearance of a Common Lizard and Noctule Bat – in JANUARY 2019!

Friends of Wildern LNR will continue working with the Council to “protect and enhance” the environment, to bring back nature in abundance, and for rarer species such as Duke of Burgundy Butterfly, Great Crested Newt, Lesser Spotted Woodpecker, Turtle Dove and Water Vole, to return.

So, go wild in Wildern! Join us and share the flora and fauna you spot with Friends of Wildern LNR Facebook group: <https://www.facebook.com/groups/2030431683870743/>

For those not on Facebook, we can provide a bi-monthly report; please contact cgbretired@hotmail.com or terry-crow@ntlworld.com

*Written by George Baker and Terry Crow
Photography by Terry Crow*

A DAY IN THE LIFE OF...

A Police Community Support Officer

PCSO 16174 Christopher Rutter

What is the role of a PCSO in Hedge End? And do you cover further afield?

The role of a PCSO is constantly changing much like the communities we serve and crimes we try to prevent. Our main purpose, which has never changed is to engage with the community, listen to their unique problems/issues and finding ways to fix them. This could be as simple as moving on a group of youths causing a nuisance at local shops, or utilising other resources to tackle speeding within Upper Northam Road. Our role is purely centred around public engagement and we do this by holding various community events where we love to meet local residents and give crime prevention advice. We get to know who makes up the communities we serve and conduct reassurance visits to people who we feel are vulnerable due to their age or disability.

We aim to patrol as much as we can, and direct most of our attention to what we call “hotspot” areas. These “hotspot” areas are places identified by the public and Police where we get the most calls from. We do tackle crime and offending but not as much as police officers do. We have various other commitments like attending safeguarding meetings at schools, attending Town Council Meetings and working with other partner agencies like Trading Standards. As a PCSO I cover the Hedge End area and parts of Botley and West End. However sometimes if resources are low, I could be stationed anywhere around the county for a shift.

Why were you inspired to take up this role in the community?

I was inspired to take up this role in the community as I believe that neighbourhood policing is one of the most important aspects of preventing crime. We really get to know who lives in our areas, and I wanted to take up the role to help them. I thought that by taking up this role I would help contribute to increasing the public’s confidence in the Police. I always wanted a role where I could make a real difference to someone’s life and as a PCSO you can do that every day. Before this role I never knew how being part of community or having a sense of belonging could have such a positive impact on a person. Now I understand this, it is a great motivating factor which keeps me interested in the role.

What is your relationship like with the Hampshire Police? Do you work closely together?

As a PCSO we work for Hampshire Police, but we are not Officers. Hampshire Constabulary is split up into various sections which specialise in different areas to help provide the best possible service to the public. For example, we have Response and Patrol teams who deploy to ongoing incidents and the Road Policing unit who attend road traffic collisions. PCSOs sit in the department called Prevention and Neighbourhoods and we are made up of police officers, PCSOs and special constables. Under our specific department we specialise in community safety and prevention. We are well connected to the other departments and communicate with them daily.



Could you please share an insight into your day to day duties?

My average day would consist of arriving at Hedge End Police Station and logging onto a computer. Here I use a police system to search all the crime and other incidents which happened overnight or the days before. Here I can identify a victim of crime who may need my help. For example, I may find out that a Burglary had happened somewhere in Hedge End. I would write this address in my pocket note book and be sure to visit the victim sometime during the duty. When I visit, I would give reassurance/ advice and conduct house to house enquiries to look for evidence. After this I would go on patrol either by car/bike or walking around Hedge End. I would patrol the “hotspot” areas and make sure no crimes were being committed. Whilst patrolling I could be called up on the radio and be deployed to an ongoing incident. I may have one or two meetings to attend that day as well.

In your opinion, what skills & qualities does a PCSO need to have?

A PCSO needs to have good communication skills especially when giving crime prevention or advice to someone. Being a victim of crime can be scary and confusing, so being kind and reassuring is very important. They need to be approachable to enable strong links with the community they serve and be professional as they uphold the values and beliefs of the police service. A PCSO will also need good listening skills to truly understand the problems that their community faces and be an expert problem solver to remedy them. A PCSO has to be calm in potentially volatile situations but probably most of all they must be a strong decision maker. Making decisions is at the heart of what we do, and we can only do this by gathering relevant information. Sometimes decisions we make can be wrong, so another good skill to have is being reflective and definitely not being afraid of failure.

How has your role changed or developed over time?

Our role has changed quite a lot over time. When we were first established in Hampshire Constabulary in 2006 our main job role was to be out and about patrolling for at least 80% of our duty. Over time we gained more responsibility in supporting our colleagues/communities and providing safeguarding to vulnerable people. This means that now we spend much more time in the office completing referrals and phone calls. Crimes also change and now that nearly everyone has access to the internet, we are deployed to new types of incidents which may not have happened much 10+ years ago. For example scams and online fraud. As a PCSO we have to reflect the community we serve which means my role in Hedge End could differ completely from a PCSO who works in Portsmouth.

What do you find challenging about the role as a PCSO?

As a PCSO our workload can vary a considerable amount depending on the time of year. For example, in the summer months when youths are generally off school, we see a huge increase in Anti-Social Behaviour (ASB). Compared to winter months there is not much ASB, but we do see an increase in burglaries. Keeping up with our current issues whilst balancing our meetings, appointments, patrolling and paperwork can be tough especially if we are deploying to any ongoing incidents. We also get various tasks given to us whilst out and about like parking complaints from local residents and I do find it challenging to make enough time to tackle each job.



Are there any specific highlights within your job, which you feel particularly proud of?

It is hard to choose a specific highlight within my job as nearly every day me and my colleagues make a real difference in someone else's life. There is one highlight I do feel proud of though. One day I was doing a routine Crime Prevention Event in Hedge End and was talking to many members of the public. Around half way through a deaf person approached me and I suddenly realised I had no idea how to talk to them! I felt so bad that I could not provide the same level of service to this person as I did the hundred other people, I had met that day. I thought I was a good communicator and effective in my role but then realised I could not effectively communicate with this particular member of my community.

This did not feel right to me and soon after I booked onto a sign language course and a year later, I obtained a Level 2 Qualification in British Sign Language. This enabled me to become a Police Link Officer for Deaf people (PLOD). Now I support the deaf community and make sure they have regular and constructive contact with the Police, and I do feel very proud to be part of this.

What type of equipment does a PCSO carry to help police the streets?

PCSOs carry a radio which is identical to the ones that police officers use which will be attached or clipped to our stab vest. In addition, we carry utility belts which is full of first aid medical supplies as we are trained first aiders. Also, like police officers we have body worn video which will also be attached/clipped to our stab vest. Body worn video is basically a personal camera which can record, which helps us gather evidence and record crimes. Unlike police officers however we do not carry handcuffs, a baton, taser or pepper spray.

As a PCSO, what do you think is most unknown about what you do, which could be of interest to the general public?

I think that maybe one thing that the general public may not know is that just because they do not always see us walking around their neighbourhood, it does not mean we are not there. We do a lot of work behind the scenes like writing referrals to safeguarding agencies and writing notes for meetings/appointments and this does mean that some duties we are not able to walk around our area.

I know that every PCSO at my station would love to be out in their community all day every day, but this would mean some of our urgent safeguarding jobs would not be completed. I get frustrated myself that I cannot spend most of the time out on the streets but the work we do in the station plays a huge part of improving and potentially saving the lives of the vulnerable members of our community. A lot of the work (at the moment the majority) will never be seen by the public and I think it is good for the public to know we are working hard even though we are sometimes invisible!

A special thank you to Christopher for sharing.

WHAT'S ON GUIDE



ARTS & CRAFTS

- Art & Craft Club Tue 1.30-3.30pm | Village Hall | Outings | Demos | 01489 798233
- Calligraphy Wed 1.15-3.15pm | 2000 Centre | Beginners welcome | email: mary.noble@btinternet.com
- Crafty Saturdays Saturday Mornings | The d@rt Centre | All ages & abilities | 01489 779471
- Flower Club 1st Tues, Monthly 7pm | 2000 Centre | Demos | Workshops | 01489 783115

MUSIC & DANCE

- Dance Junkie Mon Eve | The d@rt Centre | Street Dance Classes | All ages & abilities | 01489 779471
- Glee Club Mon 7.15-8.45pm | Drummond Centre | Singers All Ages & Abilities | 07810 127351
- Hamble Valley Brass Mon 7.45-9.20pm | Community Band | The d@art Centre, Wildern Lane | 07929 061068
- Jamz Dance Zumba, Street & Toddler Classes | Hedge End Club | www.jamzdance.co.uk | 07929 095405
- Line Dancing Line dancing classes Fri 10 - 11am | Village Hall | All Levels & Abilities | 07967 631739
- New Music Makers Thurs 7.30pm | Methodist Church | Light Music | Show songs | 02380 454285
- Perform Fri 4 & 5pm Turnpike Pavilion | Drama, Dance, Sing (Age 4-7's) | enquiries@perform.org.uk
| 0207 2559120
- Performing Arts Company (YOUTH) Youth Drama (14-30) | Sun & Mon | HEYCA | 01489 690140
- Rock Choir Wednesday Eve | Wildern School Main Hall | Everyone Welcome | 01252 714276
- Sally Johnson Dance Academy Drummond Community Centre | Ballet, Tap, Modern | 02380 255415
- Serious Shapes Company Thurs eve | The d@rt Centre | Adult Dance Classes | 07851 285860
- Simply Singers Community Choir Thur Eve | Turnpike Pavilion | sandrafreeman51@yahoo.co.uk
| 02380 554544
- Wellstead Community Choir Mon 7.30pm | Salvation Army Community Church | 01489 798681
- West End Singers Wed 7.30pm | 2000 Centre | Mixed Voice Choir | 02380 404881 | www.westendsingers.co.uk



WHAT'S ON GUIDE

COMMUNITY CLUBS

1st Hedge End Boys' Brigade	Methodist Church Boys 4+ 01489 7837791
1st Hedge End Girls' Brigade	Methodist Church Girls 4+ 02380 696222 info@hedgeendgb.org.uk
31st Itchen North Scout Group	Beavers, Cubs, Scouts, Explorers amazonseascouts.org
Bingo	Wed 1.30-3.30pm (Tickets 1.15pm) Drummond Centre 'Good Companions SC' 01489 780251
Breath Easy Hedge End	Fri 2-3pm Underhill Centre COPD Sufferers Grp 02380 403339
Friends Unlimited	8pm, 1st & 3rd Wed Monthly Shamblehurst Barn www.friends-unlimited.org.uk
Girl Guiding Rainbows Brownies Guides Rangers (Itchen Valley Division) to join, visit:	www.girlguiding.org.uk
Hamble Valley U3A	2nd Tues Mon, 2pm St Luke's Church, Shamblehurst www.u3asites.org.uk/hamblevalley
Hedge End Rotary	Meet Tuesdays Botley Park Hotel, Winchester Rd 0844 879 9034
Hedge End Carnival Committee	Help always needed info@hedgeendcarnival.org.uk 01489 785041
Hedge End Horticultural Society	Meets 3rd Mon monthly 7.30pm 2000 Centre Large Hall 01489 784823
Macular Disease Society	Central Vision Loss Support United Reformed Church 01264 321963
Over 60s' Club	Mon 1pm-3.30pm 2000 Centre New members welcome 07818 802 241
Pop in Cafe	Wed 10.30am - 12 noon Methodist Church Tea, Coffee, Chat & Booksale Just pop in!
Retirement Club	Tue 1pm - 3.30pm 2000 Centre Cards Bingo 01489 790552
St John Ambulance Badgers	Wed Eve Salvation Army C'mty Centre, Dowd's Farm All ages 07827 883439
Women's Institute	4th Tues Monthly 7.30pm 2000 Centre Crafts Walking 01962 852721

SPORT CLUBS

GOJU RYU Karate	Weekly classes Village Hall All Ages & Abilities www.hsgk.co.uk 01489 782038
Flexercise	Over 50's Keep Fit Wed 11.15am-12.15pm Village Hall 01489 781616
Hedge End Bowling Club	Woodhouse Lane New members always welcome 01489 783690
Hedge End Indoor Bowls Club	Wed 2-4pm, 7.30-9.30pm Sun 7.30-9.30pm Village Hall Join Us!
Hedge End Junior Cricket Club	Teams for Under 9s & Under 15s Girls & Boys chairman@hejcc.co.uk
Hedge End Ranger FC	League football for all ages Girls & Boys Rodaway Pavilion 07876 037653
Pilates	Mon (10-11am), 2000 Centre Fri (11am-12pm) Village Hall All levels & abilities 07967 631739
Paula's Zumba / 'Fitsteps'	Thurs 6.30pm (Fitsteps) 7.30pm (Zumba) 2000 Centre 07731320440
Steady & Strong Classes	2000 Centre Posture, Mobility & Confidence 01962 846605
Table Tennis Club (Seniors)	Thurs 2-4pm 2000 Centre, Large Hall Beginners Welcome 01489 788237
Table Tennis (Over 60s)	Tue 10am -12 noon Underhill Centre, St Johns Church £2 01489 784985
UECHI RYU Karate	Mon & Thurs 8pm HEYCA 16+ All abilities mail@uechi-ryu.org.uk 07970 684017



GJB FOOTBALL COACHING PROVIDE FUN
FOOTBALL BASED SESSIONS FOR CHILDREN
AGED 18 MONTHS TO 4 YEARS

GJB FOOTBALL COACHING

THESE INCLUDE ACTIVITIES / GAMES BASED ON BALANCE, MOVEMENT, GROSS AND FINE
MOTOR SKILLS AS WELL AS MORE TRADITIONAL SKILLS INVOLVED IN FOOTBALL.

THE SESSIONS FOLLOW A SIMILAR PATTERN EVERY WEEK WHILE REMAINING ENGAGING AND
FUN. CHILDREN LEARN THROUGH PLAY AND IT MAY LOOK A BIT CHAOTIC AT TIMES. THEY WILL
SOON THINK NOTHING OF HAVING A BALL AT THEIR FEET, IN THEIR HANDS OR MAYBE EVEN ON
THEIR HEAD!

SESSIONS RUN WEEKLY DURING TERM TIME AT A COST OF £5.00 PER CHILD. ALL SESSIONS ARE
HELD BY A FA QUALIFIED COACH WHO HAS VALID FA DBS / CRC CERTIFICATION.

SATURDAY MORNINGS THROUGHOUT THE YEAR 10 AM-10.45 AM
THESE SESSIONS TAKE PLACE AT 19TH ITCHEN NORTH SCOUTS HALL, WARBURTON ROAD,
THORNHILL, SOUTHAMPTON SO19 6HQ.

IN ADDITION TO THIS GJB FOOTBALL COACHING ALSO PROVIDE BIRTHDAY PARTY
PACKAGES AT VERY COMPETITIVE RATES, SCHOOL HOLIDAY SOCCER COURSES AND
GRASSROOTS GOALKEEPER TRAINING. THEY CAN ALSO PROVIDE ONE TO ONE
FOOTBALL COACHING. THEY CAN ALSO ATTEND SCHOOL FETES, SUMMER / XMAS
FAYRES OR CHARITY FUNDRAISERS TO PROVIDE FOOTBALL BASED GAMES /
ACTIVITIES.

GJB Football Coaching and its services (including the ages 18 months to 4 years)
can be found by visiting www.gjb1975.wixsite.com/gjbfootballcoaching
GJB Football Coaching can also be found on Facebook, Twitter and
LinkedIn.



HEDGE-END
TENNIS COURTS

HEDGE END TENNIS COURTS

Book Online, It's Easy!

There are 3 really simple ways for you to play tennis at Woodhouse Lane:

- Subscribe everyone in your home for the year, book courts & play tennis for up to 2 hrs a day, whenever you want to for just £34.00.
- Pay and play for £8.75 per hour, per court (Adults) and £4.65 per hour, per court (Juniors - Under 14)
- Develop your tennis skills by attending our coaching sessions throughout the week for all ages and abilities.

[HTTPS://CLUBSPARK.LTA.ORG.UK/WOODHOUSELANERECREATIONPARK](https://clubspark.lta.org.uk/woodhouselanerecreationpark)

the d@rt centre
your local arts centre

Cookery Classes Spring/ Summer 2019

The d.@rt Centre is a community venue for all ages who wish to engage with arts, crafts, cookery and music, to find out about our other courses please visit thed@rt.co.uk

Chef Dan's Cookery School

Children's Cookery Club - ages 4 - 9
10am - 11.30am, 12pm - 1.30pm, £7

9th March Rock cakes	8th June Fruit scones
30th March Smartie cookies	6th July Chocolate tray bake
11th May Pizza puff pinwheels	

Advanced Children's Cookery Club - aged 9+
9.15am - 11.45am, £8

23rd March Minestrone soup	22nd June Blueberry bars
27th April Make a pizza	20th July Key lime pie
25th May All kinds of chilli	

Chef Dan's Specials, 9.15am - 12.15pm, £20

Join Dan in these courses for adults, and young adults. Enjoy a range of workshops with the theme of 'eating with friends'.

16th March Italian themed dinner party	18th May Vegetarian dinner party
20th April Get ready for Easter	15th June Gluten free risottos

Men's Cookery with Mary Hart, 9.15am - 11.45am, £9

Learn with Mary Hart as she teaches different recipes for men and beginners, wanting to improve their skills in the kitchen. Come away with a main course and dessert!

16th March Thai Green Curry, Crumble	18th May Chicken & Veg Pie, Jam Roly Poly	13th July Coq au Vin, Pavlova
13th April Pizza, Fruit Pie	15th June Lasagne, Scones	

Theone Chocolate Company Workshops, 10am - 1pm, £30

Join Chef John Calder, a qualified patissier, to produce beautiful, hand made artisan chocolates from the finest Belgian chocolate.

30th March Alcoholic Celebration Truffles	4th May Parissien Tarts
13th April Chocolate Easter Eggs	1st June Make Honeycomb

Interested? Give us a call on 01489 779 471 to book your place today

LOCAL SERVICES

LOCAL SERVICES

The Berry Theatre, Wildern Lane	02380 652333
The Community Hub (Youth Centre), Wildern Lane	01489 780440
Citizens Advice Bureau (Outreach Service), Salvation Army Community Church, 85 Whites Way	03444 111 306
The D@rt Centre (Arts), Wildern Lane	01489 779471
Hampshire Constabulary	101
Hedge End Household Waste Recycling Centre, Shamblehurst Lane	01489 795499
Hedge End Library, 11 Upper Northam Rd	0300 555 1387
Hedge End Post Office, St Johns Centre, Upper Northam Rd	01489 782066
Skyline Gold Radio 102.5FM, St John's Rd	01489 799000
TADIC (Teenage Drop-in, Wednesday 3-6pm), 28 Lower Northam Rd (tadic@btinternet.com)	07879 761660
Tennis Bowls Putting Green, Pavilion Rd (Apr-Sep)	01489 780440
Wildern Leisure Centre, Wildern Lane	01489 787128

SCHOOLS

Hampshire Education Authority	01962 869611
Berrywood Primary School, Maunsell Way	01489 780068
Freegrounds Infants School, Hobb Lane	01489 782075
Freegrounds Junior School, Hobb Lane	01489 782295
Kings Copse Primary School, Kings Copse Ave	01489 785040
Shamblehurst Primary School, Wildern Lane	01489 782342
Wellstead Primary School, Wellstead Way	01489 799351
Wildern Secondary School, Wildern Lane	01489 783473

HEALTH

St Luke's Surgery, St Lukes Close	01489 783422
The Medical Centre, 24-26 Lower Northam Rd	01489 785722
Hedge End Dental Surgery (NHS), Saracen House, Freegrounds Avenue	01489 790661

PLACES OF WORSHIP

Hedge End Baptist Church, 72A Upper Northam Rd	01489 786260
Hedge End Methodist Church, 42 St John's Rd	02380 739328
Hedge End United Reformed Church, St Johns Rd	01489 787408
Kings Community Church, Upper Northam Close	01489 784333
Our Lady of the Assumption Catholic Church, 3 Freegrounds Rd	02380 449088
St John's The Evangelist Church (C of E), St Johns Rd	01489 790048
St Luke's Church, St Luke's Close	01489 781448
The Salvation Army Community Church, Wellstead Way	01489 798681

COMMUNITY HALLS FOR HIRE

2000 Centre (Large & Small Hall), St Johns Rd (HETC)	01489 780440
Drummond Community Centre, Drummond Rd, Grange Park (HETC)	01489 780440
Norman Rodaway Pavilion, Heathhouse Lane (HETC)	01489 780440
Turnpike Pavilion, Turnpike Way (HETC)	01489 780440
Hedge End Village Hall, St Johns Rd	01489 784962
Hedge End Youth & Community Association Halls (Old School House), St Johns Rd	01489 780440
Methodist Church Hall, St Johns Rd	01489 784823
Underhill Centre, St Johns Rd	01489 790048
United Reformed Church Hall, St Johns Rd	01489 787408

CONTACTS AND COMMITTEES



How many Eggs did you find?

OFFICE OPENING HOURS

Monday - Thursday: 8.30am - 5pm
Friday: 8.30am - 4.30pm

Saturday, Sunday & Bank Holidays: Closed

Contact Us: Town Clerk Sarah Jelley

Email: Townclerk@Hedgeend-tc.gov.uk

General: Commsofficer@Hedgeend-tc.gov.uk

Gazette Enquiries: Marketing@Hedgeend-tc.gov.uk

Phone: 01489 780440

Website: www.Hedgeend-tc.gov.uk



HEDGE END TOWN COUNCIL
2000 CENTRE,
ST Johns Road
Hedge End
Southampton
Hampshire
SO30 4AF

TOWN COUNCIL COMMITTEE MEETINGS

All committee meetings are held at the Town Council Office. All meetings are formal, yet friendly and members of the public are encouraged to attend and take part. All meetings begin promptly at 7pm, with the exception of the third Wednesday Highways & Planning Meeting, which starts at 6.45pm, followed by Full Council which starts at 7.30pm.

- Recreation & Amenities - Second Wednesday monthly**
- Finance & Administration - First Tuesday monthly**
- Highways & Planning - First Wednesday & Third Wednesday monthly**
- Full Council - Third Wednesday monthly**
- Community and Culture - Second Tuesday monthly**

(Please note that the Highways and Planning Committee meeting for the third Wednesday will determine planning applications only; followed by Full Council)

2019	MARCH	APRIL	MAY	JUNE
FINANCE	5th	2nd	N/M*	4th
COMMUNITY & CULTURE	12th	9th	N/M*	11th
RECREATION & AMENITIES	13th	10th	N/M*	12th
HIGHWAYS & PLANNING	6th & 20th	3rd & 17th, 24th	22nd	5th & 19th
FULL COUNCIL	20th	17th	15th	19th

Find us on  **Facebook** 

 [@HedgeEndTown](https://twitter.com/HedgeEndTown)



N/M* = No Meeting

Join Us!

We need your ideas & feedback at meetings.